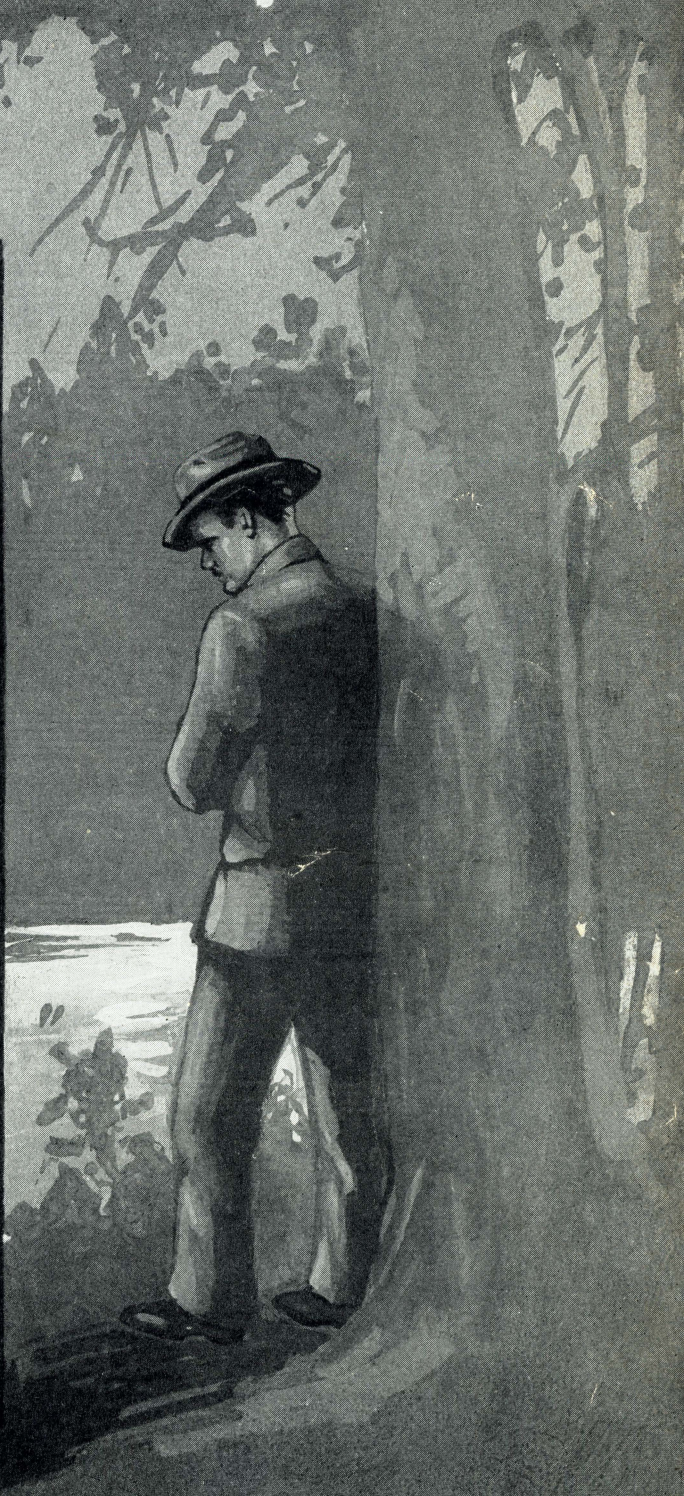


STANDARD

THE AILEEN STANLEY SOUVENIR EDITION

# SONG OF THE WANDERER

(WHERE SHALL I GO?)



WITH UKULELE  
ARRANGEMENT

WORDS AND MUSIC BY  
**NEIL MORÉT**

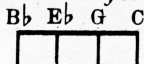


MADE IN U.S.A.

# SONG OF THE WANDERER

(WHERE SHALL I GO?)

Tune Uke as follows:



Words and Music by  
NEIL MORÉT

Not fast

*mf*

Roads are so dust - y, dear, Days are so  
Where shall I rest my head; To ease the

long pain My feet grow rust - y, dear, Just a - wand - ring on  
Where can I make my bed, Just to dream in vain

All the world's a mock - er - y, Ev - en tree - stumps laugh at me,  
So I'll keep on wan - der - ing, Sum - mer, win - ter, fall and spring,

Chords: Cm, F7, Bb7, Ebm, C# dim., Bb7, Bb Aug.

'Cause I'm such a fool to be Long - ing for you.  
Just as long as mem - 'ries cling, Mem - 'ries of you.

Refrain *Not fast*

Chords: Eb, Eb7, Ab, Abm

Where shall I go, when I go where I go

*p-mf*

Chords: Eb, Bb7, Eb, Bb Aug., Eb

Since you have sent me a - way \_\_\_\_\_ What shall I

Chords: Eb7, Ab, Abm, Eb, Bb7

do, when I do what I do When you just haunt me all day

E<sub>b</sub> G C7

Where can I find what I found when I first

(Oh tell me)

B<sub>b</sub> C7 F7 B<sub>b</sub>7 dim. B<sub>b</sub>7 B<sub>b</sub> Aug.

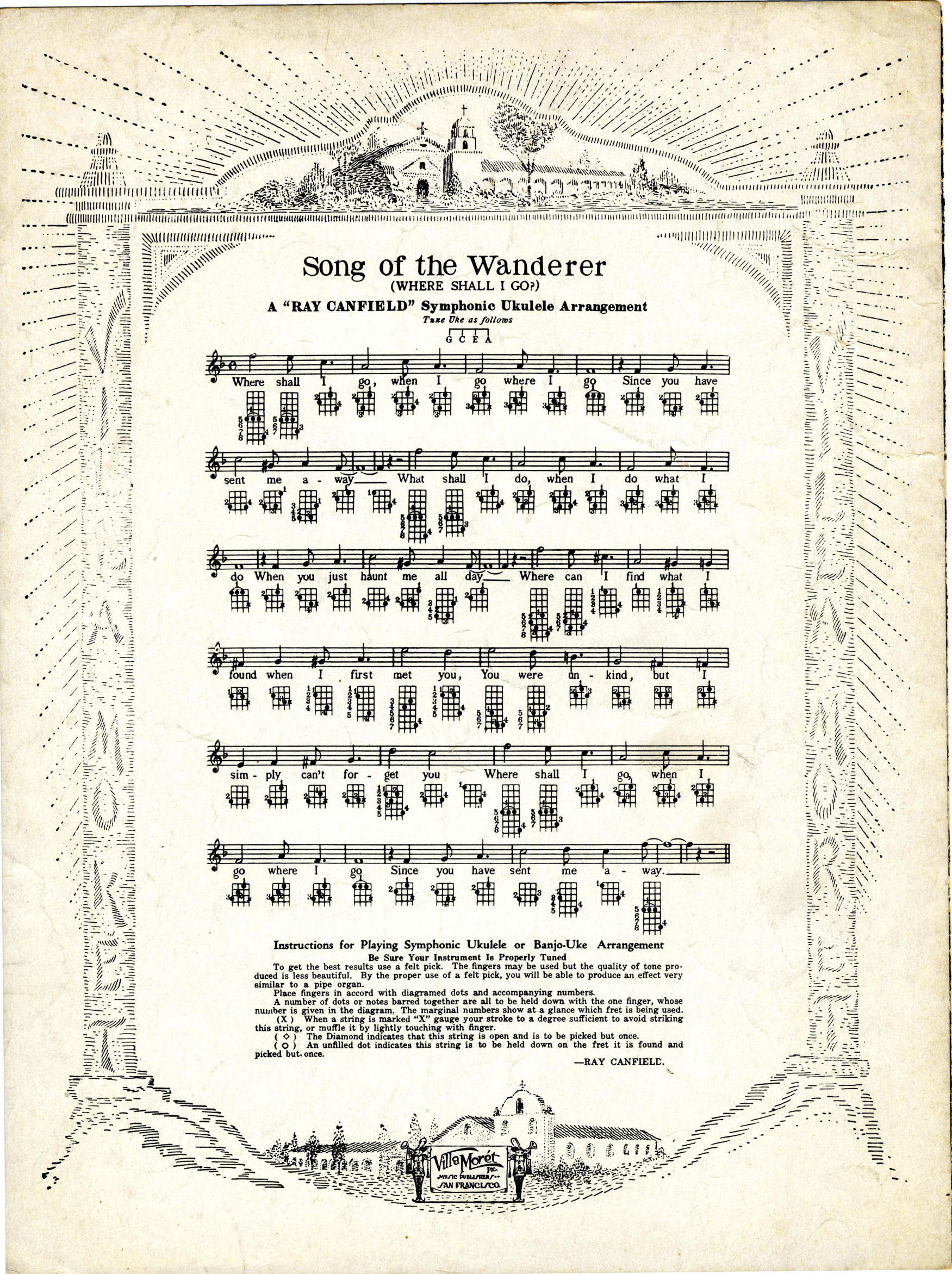
met you, You were un-kind, but I sim-ply can't for-get you.

E<sub>b</sub> E<sub>b</sub>7 A<sub>b</sub> A<sub>b</sub>m E<sub>b</sub>

Where shall I go, when I go where I go Since you have

B<sub>b</sub>7 B<sub>b</sub> Aug. 1 E<sub>b</sub> dim. E<sub>b</sub> B<sub>b</sub>7 A<sub>b</sub> B<sub>b</sub>7 2 E<sub>b</sub> dim. B<sub>b</sub>7 E<sub>b</sub>

sent me a-way. way.



# Song of the Wanderer

(WHERE SHALL I GO?)

A "RAY CANFIELD" Symphonic Ukulele Arrangement

Tune Uke as follows

G C E A

Where shall I go, when I go where I go Since you have  
sent me a - way — What shall I do, when I do what I  
do When you just haunt me all day — Where can I find what I  
found when I first met you, You were un - kind, but I  
sim - ply can't for - get you Where shall I go, when I  
go where I go Since you have sent me a - way —

### Instructions for Playing Symphonic Ukulele or Banjo-Uke Arrangement

Be Sure Your Instrument Is Properly Tuned

To get the best results use a felt pick. The fingers may be used but the quality of tone produced is less beautiful. By the proper use of a felt pick, you will be able to produce an effect very similar to a pipe organ.

Place fingers in accord with diagramed dots and accompanying numbers.

A number of dots or notes barred together are all to be held down with the one finger, whose number is given in the diagram. The marginal numbers show at a glance which fret is being used.

(X) When a string is marked "X" gauge your stroke to a degree sufficient to avoid striking this string, or muffle it by lightly touching with finger.

(◇) The Diamond indicates that this string is open and is to be picked but once.

(○) An unfilled dot indicates this string is to be held down on the fret it is found and picked but once.

—RAY CANFIELD.



Villa Moret  
MUSIC PUBLISHERS  
SAN FRANCISCO, CALIF.