

Dauer 14'

Vier Lieder

für

Gesang und Orchester

von

Anton Webern

op. 13

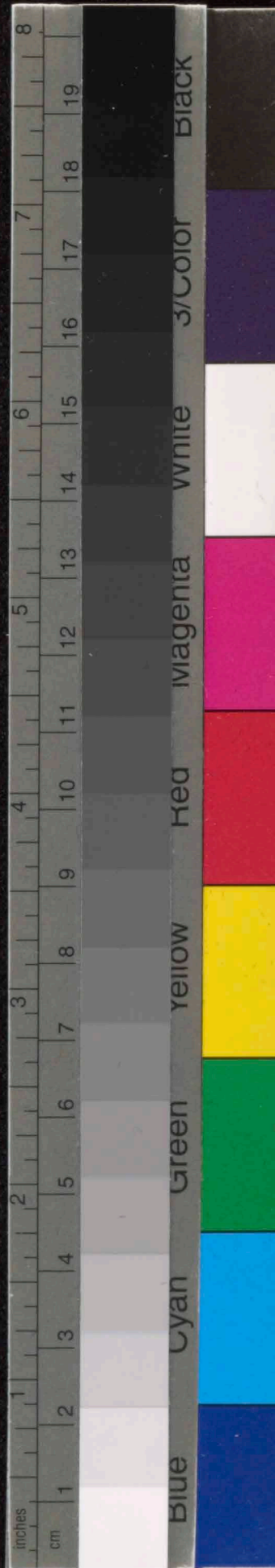
- Partitur -

S557



TradeMark
No 3
14 linig

RG



No 1 Wiese im Park (Karl Kraus)

Besetzung des Orchesters: Flöte, Klarinette, Bass-Klarinette, Horn, Tromp., Posaune,
Solo-Geige, Solo-Bratsche, Solo-Violoncell, Solo-Contrabass,
Celesta, Harfe, Glockenspiel.

No 2 Die Einsame (Wang-Seng-Yu, aus Hans Bethges „Chinesische Flöte“)

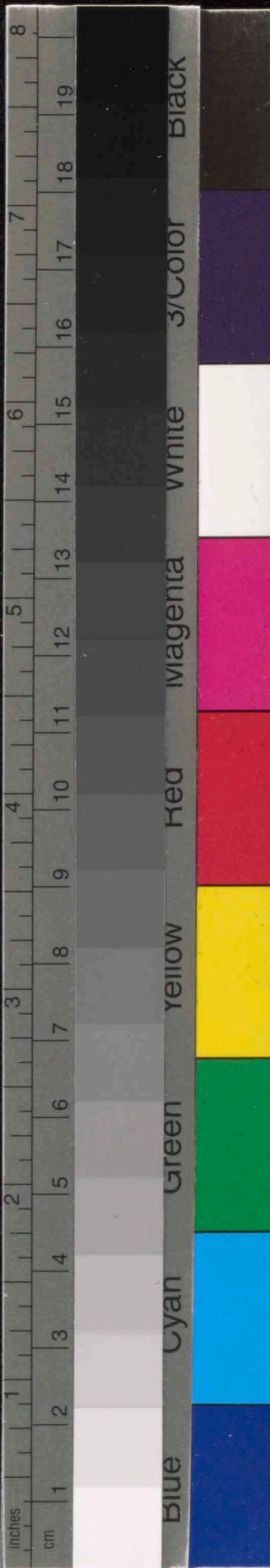
Besetzung des Orchesters: Kleine Flöte, Klarinette, Bass-Klarinette, Horn, Tromp.,
Posaune, Solo-Geige, Solo-Bratsche, Solo-Violoncell,
Solo-Contrabass, Harfe, Celesta, Glockenspiel.

No 3 In der Fremde (Li-Tai-Po, aus Hans Bethges „Chinesische Flöte“)

Besetzung des Orchesters: Kleine Flöte, Klarinette, Bass-Klarinette, Trompete,
Solo-Geige, Solo-Bratsche, Solo-Violoncell, Harfe, Celesta.

No 4 Ein Winterabend (Georg Trakl)

Besetzung des Orchesters: Klarinette, Bass-Klarinette, Trompete, Posaune,
Solo-Geige, Solo-Bratsche, Solo-Violoncell,
Solo-Contrabass, Harfe, Celesta.



all
KSM

Wiese im Park

von Karl Kraus

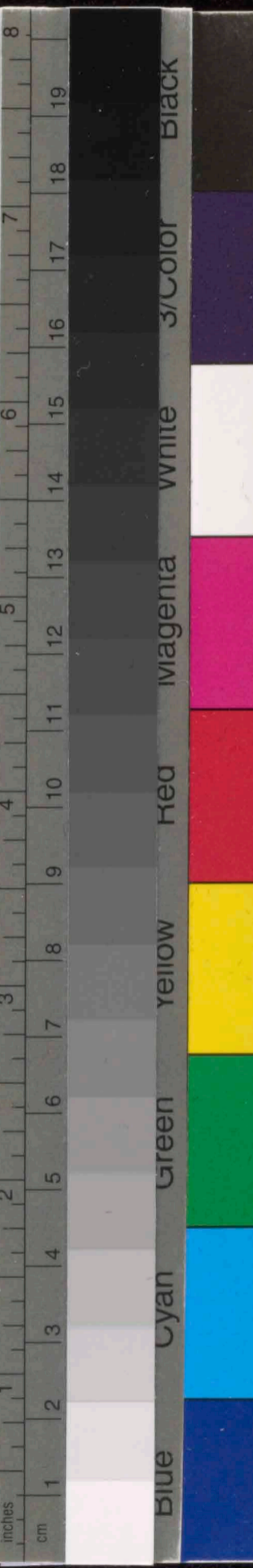
für

Gesang und Orchester

von

Anton von Webern

op. 13 No. 1.



TradeMark
No 3
14 linig



Sehr ruhig (♩ = circa 60)
rit. 2

al tempo
espress

Klarinette in B.

Bass-Klar. in B.

Horn in F

Trompete in B
mit Dämpfer

Posaune
mit Dämpfer

Gelesta

rit.

tempo

Gesang

Wie wird mir zeit- los

rück- kehrt

Solo Violine
mit Dämpfer

Solo Bratsche
mit Dämpfer

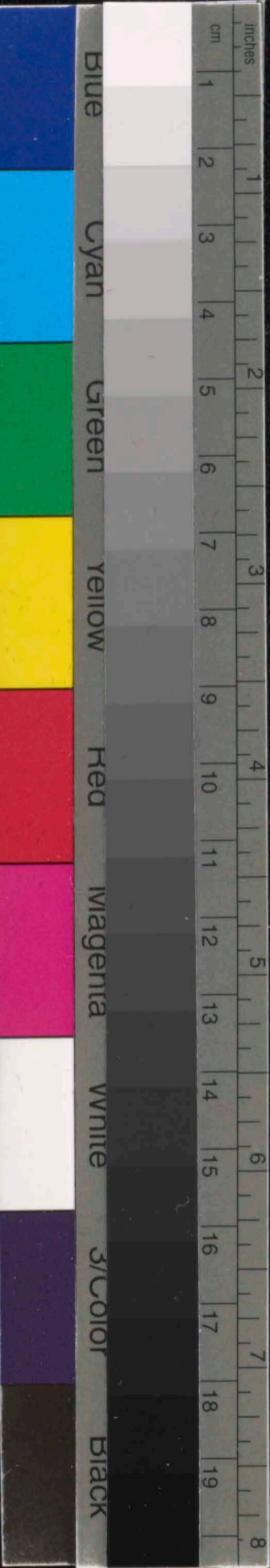
Solo Cello
mit Dämpfer

Solo Contrabass
mit Dämpfer

am Aug.

am Aug.

1/2 f



Flöte

Klar. in B.

Basklar. in B.

Tromp. in B.

Posaun.

Gelesta

poco rit. *tempo* *rit.* *Lebhaft* ♩ = ♩, ca. 120

8 9 10 11 12

Flöte

Klar. in B.

Bassklar. in B.

Trompete in B.

Posaune

Harfe

celesta

poco rit. *Lebhaft*

äußerst gerat

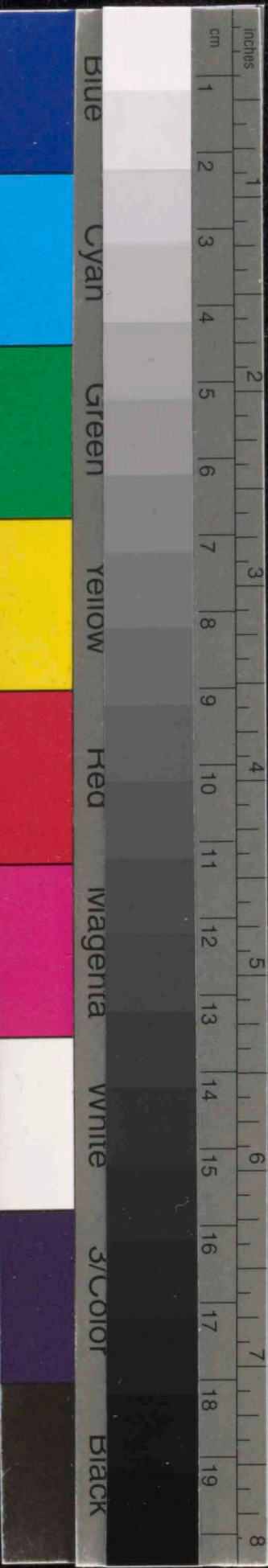
fühlen. und die- für- über mein Land.

Dämpfer ab

arco

Dämpfer ab

13



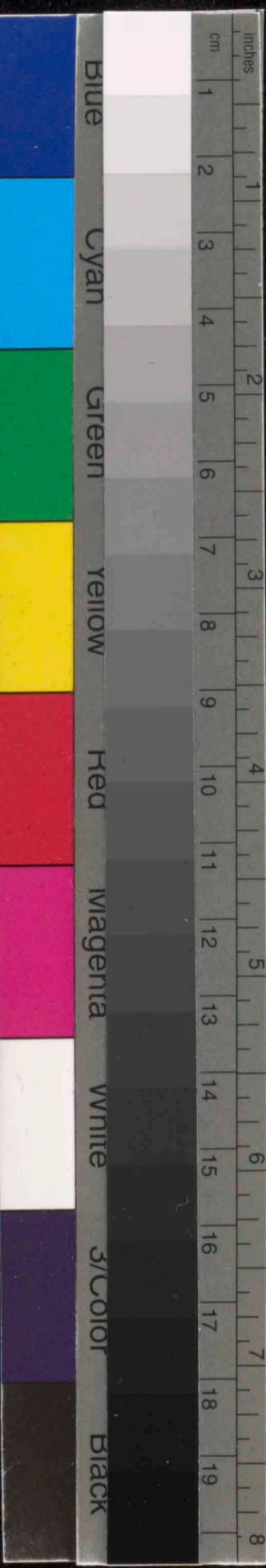
bel
har
no
su

Handwritten musical score for orchestra and voice. The score is divided into measures 12, 13, 14, 15, and 16. The instruments and parts include:

- Flöte¹⁵**: Flute, starting in measure 15.
- Klar^{in B}**: Clarinet in B-flat, starting in measure 14.
- Bass. Klar^{in B}**: Bass Clarinet in B-flat, starting in measure 14.
- Tromps. in B^{mit Dämpf.}**: Trumpets in B-flat with mutes, starting in measure 14.
- Posaune^{mit Dämpf.}**: Trombone with mutes, starting in measure 14.
- Celesta**: Celesta, starting in measure 12.
- Harfe**: Harp, starting in measure 12.
- Glocken**: Bells, starting in measure 13.
- Quary**: Voice part, starting in measure 14 with the lyrics "Da sin-lun Glo-ken-blein".

The score includes various musical notations such as dynamics (pp, p, mp, f), articulation (accents), and performance instructions like "Lebhaft" (lively) and "ofna Dämpf." (without mutes). The time signature is 2/8.





Handwritten musical score for orchestra, measures 17-21. The score includes parts for Flute (Fl.), Horn in B-flat (Hl. in B.), Oboe in B-flat (Opf. in B.), Celesta (Celest.), Clarinet (Klarf.), Glockenspiel (Glock.), Violin (Vcln.), Viola (Vcln.), and Cello/Double Bass (Vcllo/Bass).

Measure 17: Flute, Horn, Oboe, and Glockenspiel play a rhythmic pattern of eighth notes. Dynamics include *ff* and *mf*. The Cello/Double Bass part is marked *pp*.

Measure 18: Flute, Horn, Oboe, and Glockenspiel continue. Dynamics include *ff* and *mf*. The Cello/Double Bass part is marked *pp*. The Violin part is marked *mf* and *rit.*

Measure 19: Flute, Horn, Oboe, and Glockenspiel continue. Dynamics include *pp* and *mf*. The Cello/Double Bass part is marked *pp*. The Violin part is marked *mf* and *rit.*

Measure 20: Flute, Horn, Oboe, and Glockenspiel continue. Dynamics include *pp* and *mf*. The Cello/Double Bass part is marked *pp*. The Violin part is marked *mf* and *rit.*

Measure 21: Flute, Horn, Oboe, and Glockenspiel continue. Dynamics include *pp* and *mf*. The Cello/Double Bass part is marked *pp*. The Violin part is marked *mf* and *rit.*

Lyrics: *... und! ... und! ... und! ... und!*

Performance instructions: *arco*, *am Stab*, *Dämpfer ab.*, *o.d.*

27 28 29 30 31

Flatterzunge

Flöte *ppp*

Klar. in B. *p*

Bfs-Klar. in B. *ppp* leicht

Horn in F. *sfm d.* *pp* *sehr zart.* *pp*

Tromp. in B. *ppp*

Belesta

Harfe *p*

p *mp*

Hain, Herr Ad-mi-... ver. *mp* *Stimm im Romm-... lang*

spiccato *stacc.* *staccato*

Violine *ppp* *staccato* *ppp* *ppp*

Bratsch *stacc.* *ppp* *ppp* *ppp*

Cello *o.d.* *pp* *ppp* *ppp* *ppp* *ppp* *ppp*

C.B. *ppp* *sehr zart* *ppp* *ppp*

staccato *ppp* *ppp* *ppp*

Handwritten musical score for orchestra and voice. The score is divided into measures 40, 41, 42, and 43. The time signature is 2/4.

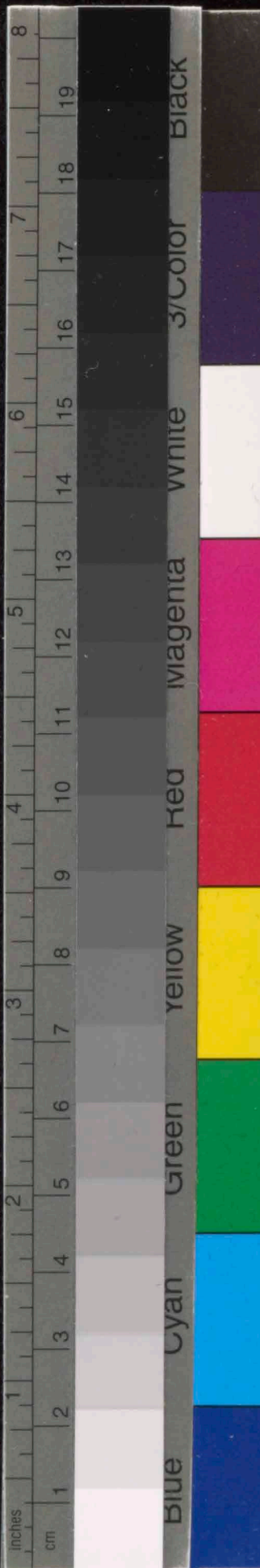
Measures 40-41: The upper strings (Violins I, Violins II, Violas, Cellos) play a melodic line starting on a whole note, marked *sf* *cresc* and *sf*. The bassoon and double bass play a rhythmic accompaniment. The voice part (Soprano) has the lyrics: "Citler Fris, nun fall!".

Measure 42: The upper strings continue their melodic line. The bassoon and double bass play a more active accompaniment. The voice part has the lyrics: "So hor dirsum".

Measure 43: The upper strings play a final melodic phrase. The bassoon and double bass play a concluding accompaniment. The voice part has the lyrics: "Min = = dre".

Instrumentation and Performance Markings:

- Violins I & II:** *sf* *cresc*, *sf*
- Violas:** *sf* *cresc*, *sf*
- Cellos:** *sf* *cresc*, *sf*
- Bassoon:** *sf*, *espress*, *f*
- Double Bass:** *f*, *sf*
- Flute:** *sf*, *sf*
- Glockenspiel:** *sf*, *sf*
- Harps:** *sf*, *sf*



rit. ----- Schleppehend (♩ = ca 88)

44 45 46 47

Fl. *ppp* *f*

Klar. in B. *ppp* *f*

Bp. Kl. in B.

Horn in F *pp* *espress*

Trp. in B *f* *pp*

Pos.

Clarinete *pp*

Fagott *pp*

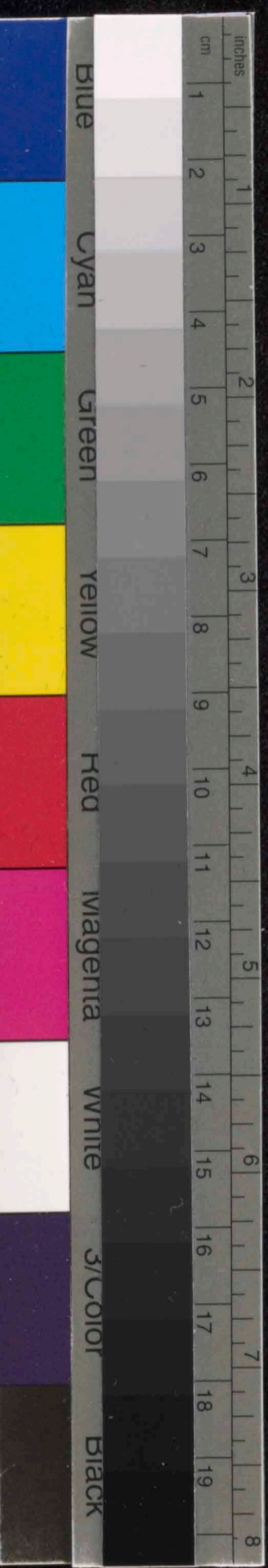
Vcll. *mp* *f* *pp*

Vcln. *pp* *espress* *pp*

Violoncelli *pp* *arco* *pp* *arco* *pp*

Contra Bass *f* *pp* *pp*

Text: *und drinnen laut. Ein fu - tur - bay pflicht pri - m*

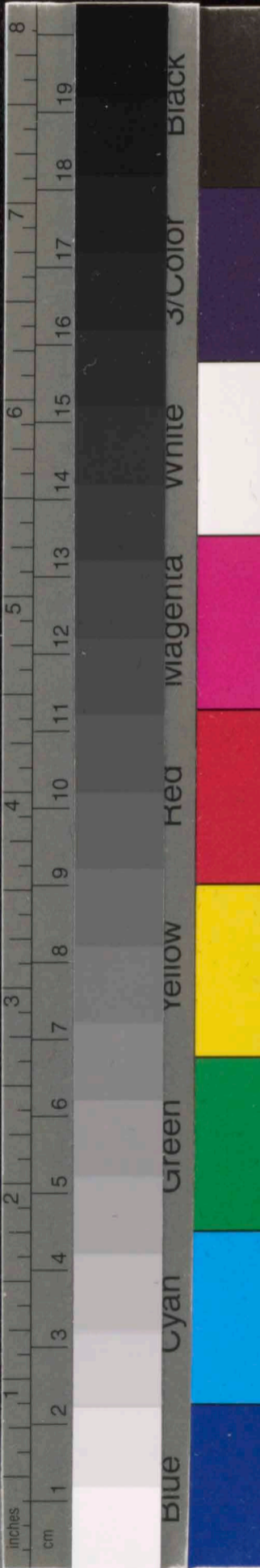


48 rit. ----- 49 Sehr gedehnt (♩ = 72) rit. ----- 51 (Loca 48)

Flute
Clarinet
Bassoon
Oboe
Violin
Viola
Cello
Double Bass

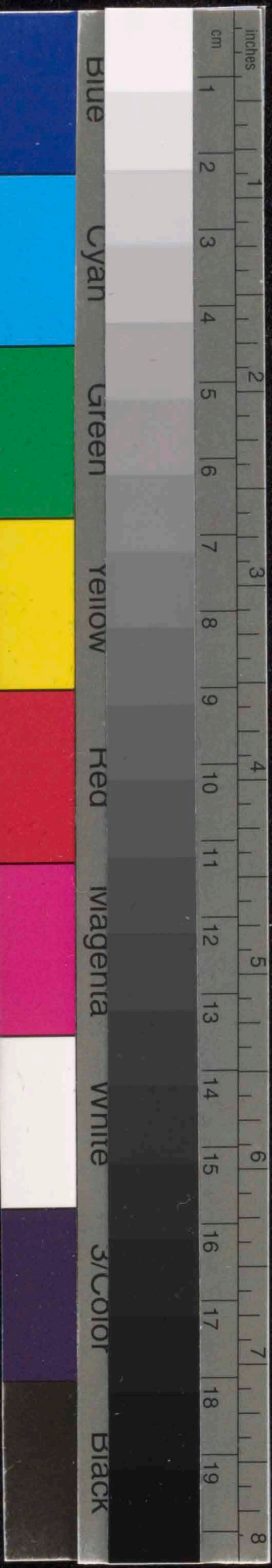
Langsam anf. und al- ter bleibst al- ter.

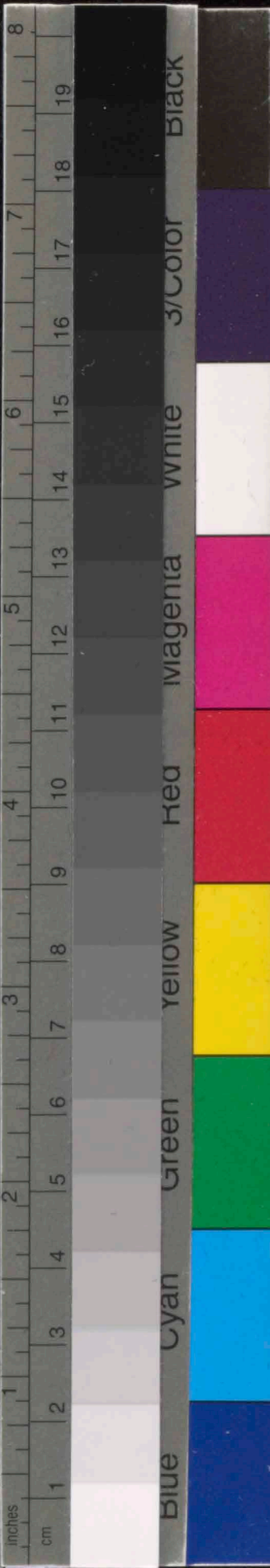
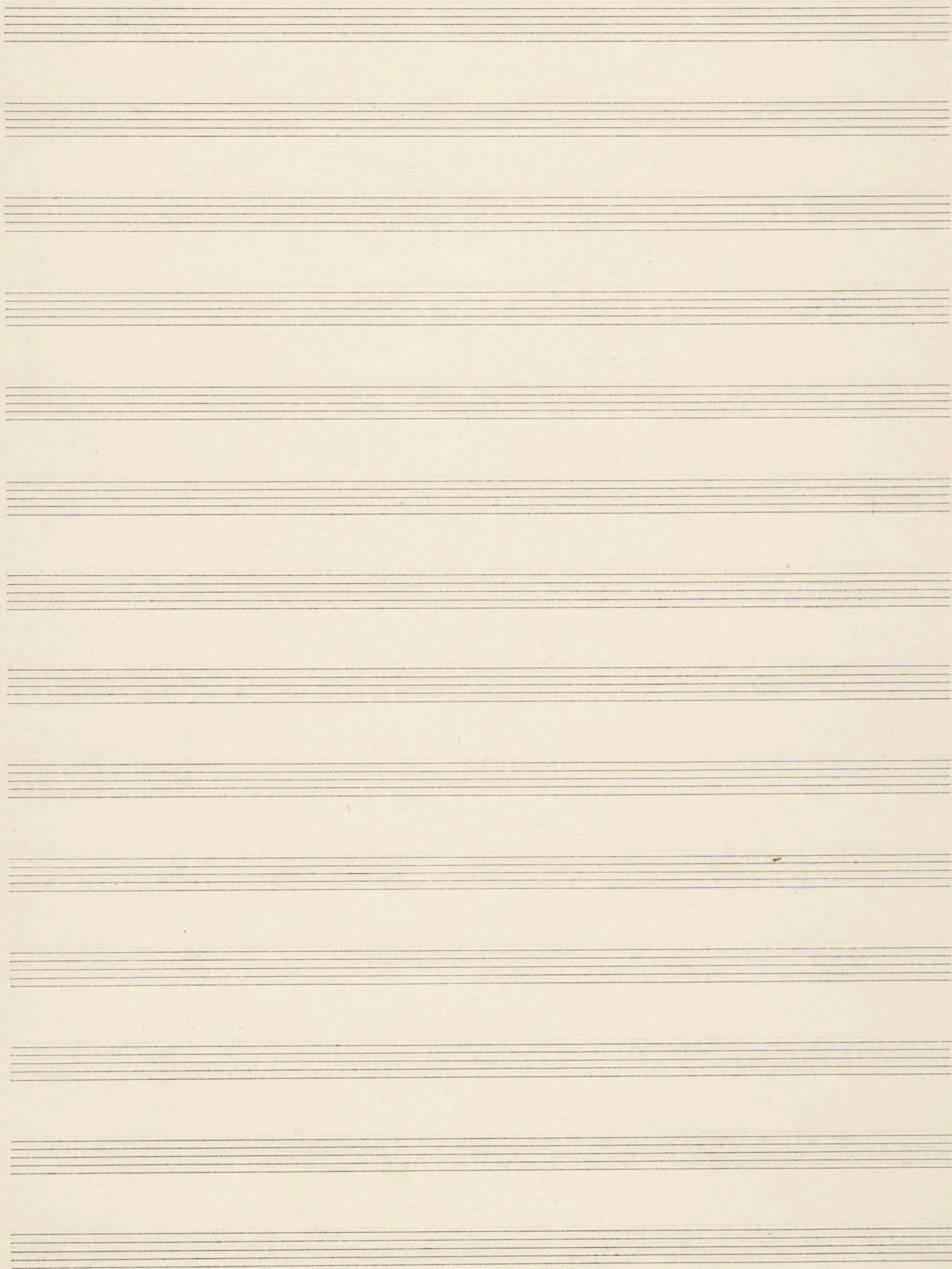
ppp, pp, p, arco, espress, 3, 3



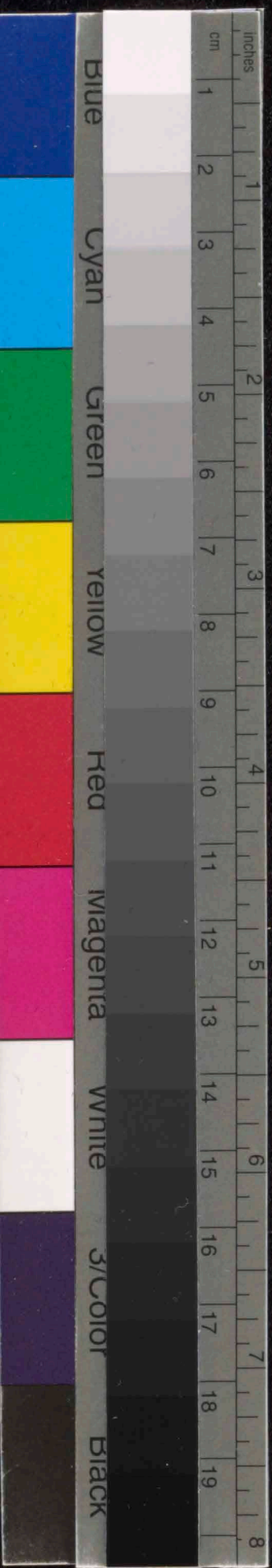
9

A page of music manuscript paper featuring 15 horizontal staves. Each staff is composed of five parallel lines, spaced evenly down the page. The staves are currently blank, with no notes or markings.





This image shows a page of 14 blank musical staves. Each staff is composed of five parallel horizontal lines, spaced evenly down the page. The paper is off-white or light beige, showing signs of age. The staves are arranged in a vertical column, with a small gap between each staff. There is no musical notation or other markings on the page.



No. 2.

Die Einsame
(Chinesische Flöte.)

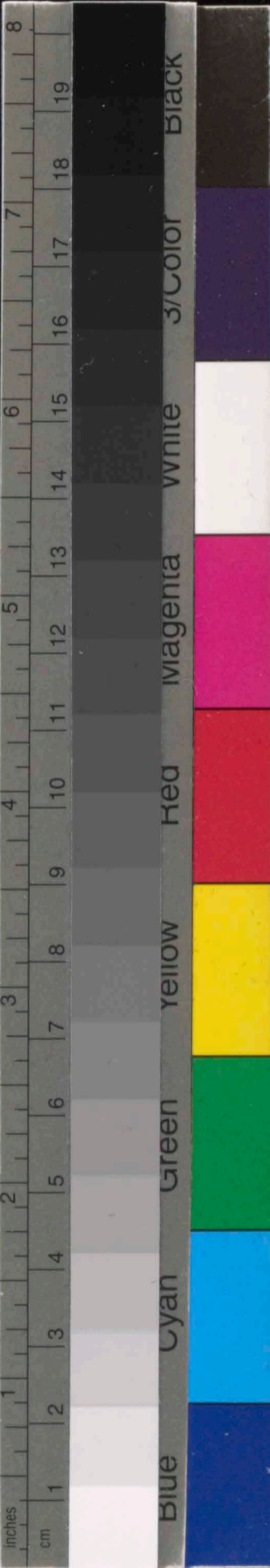
für

Gesang und Orchester.

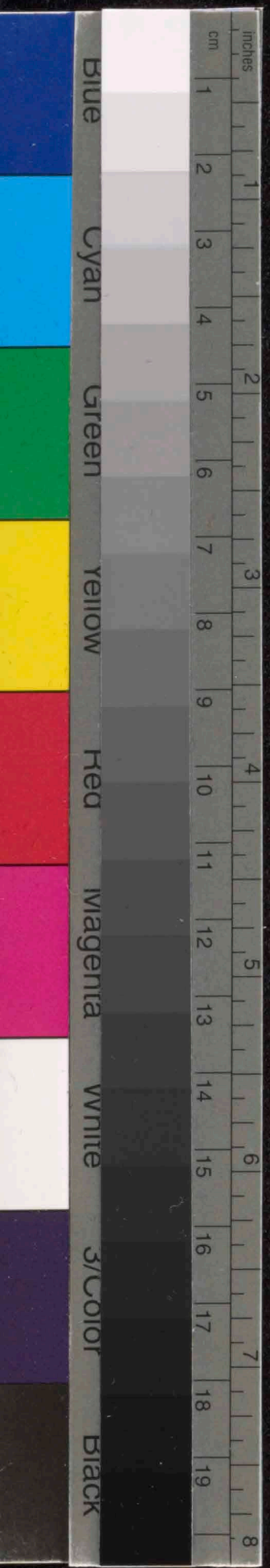
v.

Anton Webern

Op. 13. No. 2.



This page contains 18 horizontal musical staves, each consisting of five lines. The staves are arranged vertically and are currently empty, with no musical notation or clefs present.



Klar

Bass. K.

*Komp
mit D.*

Ha

geso

*Solo G
(mit D)*

*Solo V
(mit D)*

Die Einsame

(Kang-Song-Ju aus Kang Gethjos, Chinesischer Klöte)

v. Anton Webern, Op. 13. N. 2.

bewegt. ♩ = ca 84. rit. . . . tempo

Klar. B. *pp*

Bar. Klar. B. *pp*

Komp. B. mit Dämpfer *pp*

Harf. *pp*

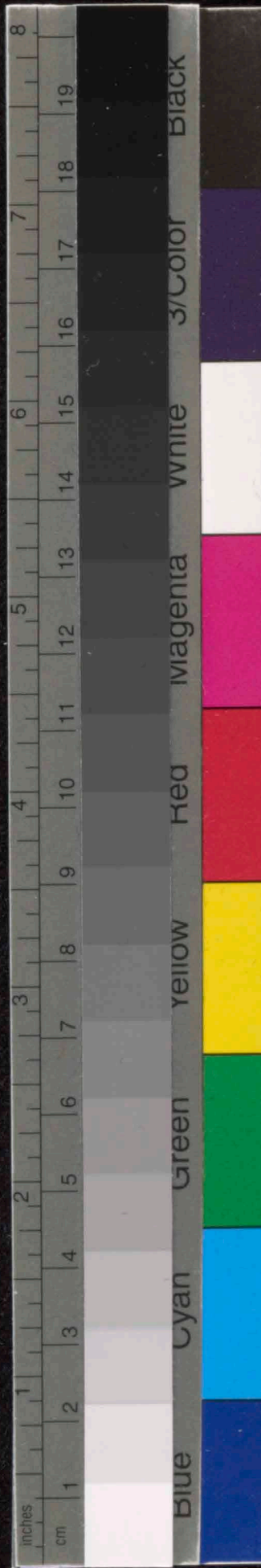
Gesang

An dünn- hel - blau-em Him- mel

Solo Geige (mit Dämpfer) *f*

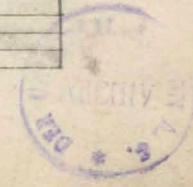
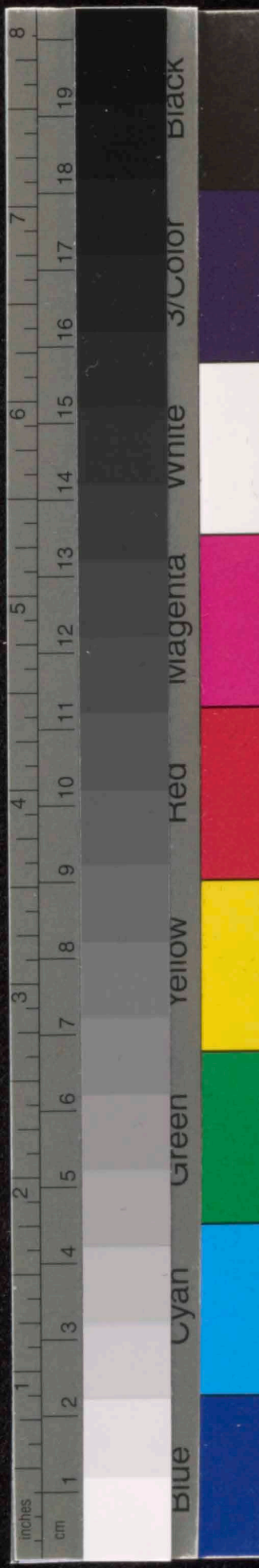
Solo Violoncell (mit Dämpfer) *f*

am Steg- tr (#)



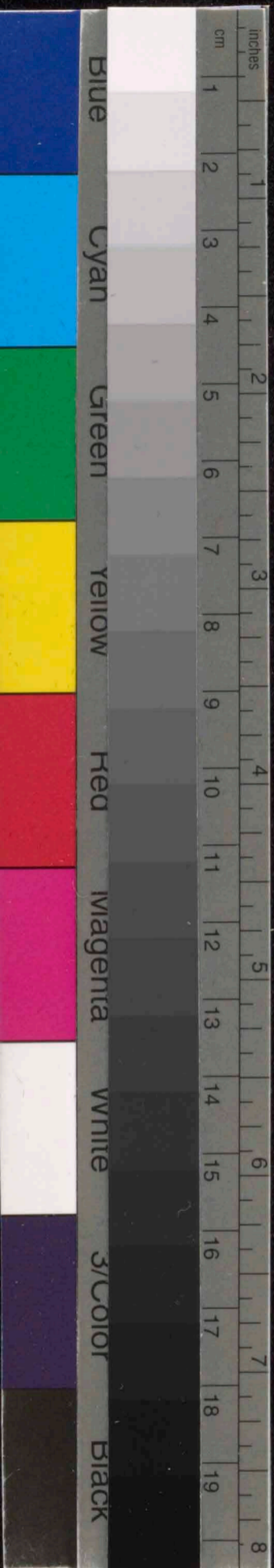
rit - - - - - tempo

Handwritten musical score for various instruments and voice. The score is arranged in staves from top to bottom: Klar. in B., Horn in B., Tromp. in B., Posanne, Celesta, Harfe, Gesang, Pratsche, Viol. Cello, and Contra Bass. The music includes dynamic markings such as *pp*, *f*, *sfz*, and *pp*, and includes a vocal line with German lyrics: "Schwer - von Ge - danken ist mein ein - sam Fleck. Ich". The score features complex rhythmic patterns, including triplets and rests, and is marked with measure numbers 12 through 17. The time signature changes from 3/4 to 2/4 between measures 14 and 15.



Handwritten musical score for orchestra and voice, measures 18-22. The score includes parts for Flute, Clarinet in B, Bass Clarinet, Horn in F, Trombone, Positone, Celesta, Voice, Violin, Viola, and Cello. The music is in 3/4 time and features dynamic markings such as *mf*, *ff*, and *col legno (gattiniano)*. The voice part has lyrics in German: "wei - - ne, wei - - fo - - ne; mei - - ne ar - men Trä - - nen rin - nen so".

Measures 18-22 are marked with measure numbers 18, 19, 20, 21, and 22. The word "Flutterz." is written above measure 21. The score includes various musical notations such as slurs, accents, and dynamic markings.



Handwritten notes on the right margin of the page, including:

- Klar
- B. Klar.
- Tromp
- Posaun
- Karf
- Celesta
- Glocken
- Gesang
- Geige
- Bratsche
- Viol.
- C. B.

rit - - - - - accel. - - - - - tempo

Klar. B.

B. Klar. in B

Trump. in B
m. Spf.

Posaune
m. Spf.

Karf.

Celosta.

Glockenspiel

Gesang.

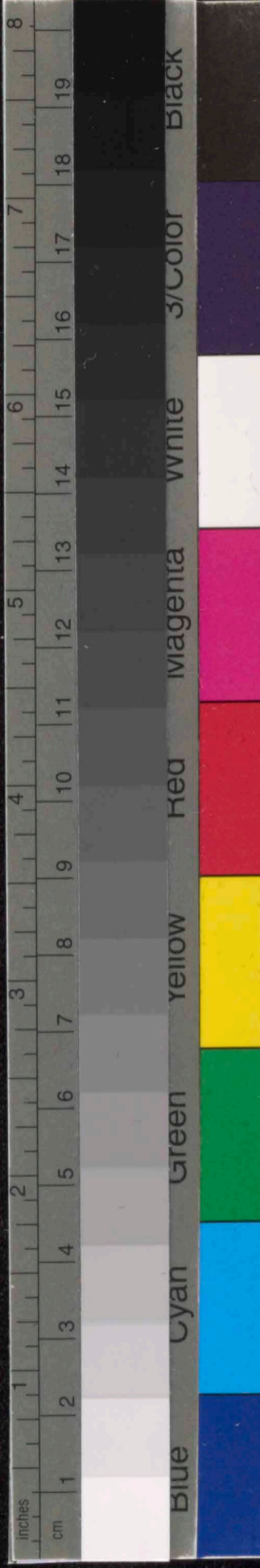
heiss und bit-ter von den Ohn-ge-n, weil du so fern bist mei-ner gro-ßen Seh-n

Geige
ohne Spf.

Bratsche
ohne Spf.

Vel.
m. Spf.

Cl. B.
ohne Spf.



rit *tempo rit*

Klar. = B. 28 29 30 31 32

B. Klar. = B.

Cornu u. Opf.

Harfe

Glockenspiel

Gesang

f *f* *f* *pp* *ppp*

-- sieht, weil dies nie be-grei-fen wird, wie weh mir ist, wenn ich nicht bei dir bin.

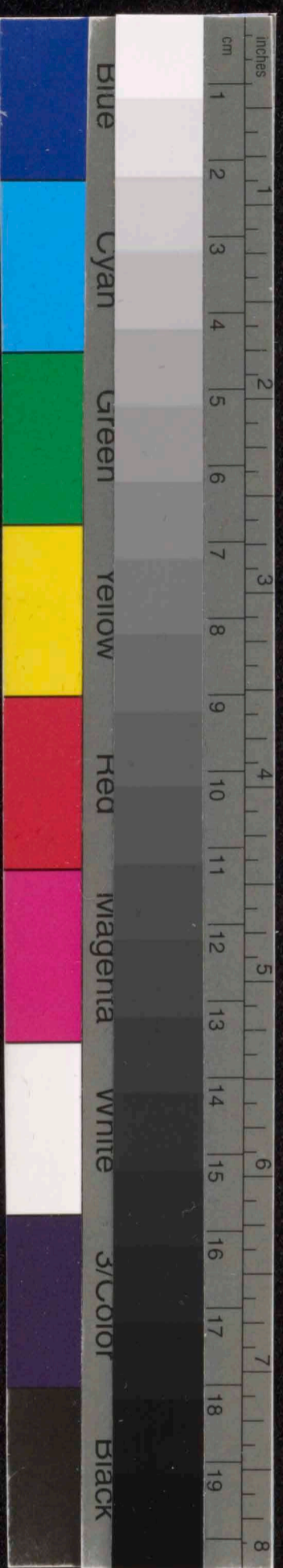
Geige ohne Opf.

Bratsche ohne Opf.

Vel. ohne Opf.

l. B. spit. Opf.

arco *arco* *arco* *mit Dämpfer* *arco*



cell
1/4

In der Fremde

(Chinesische flöte)

für

Gesang u. Orchester

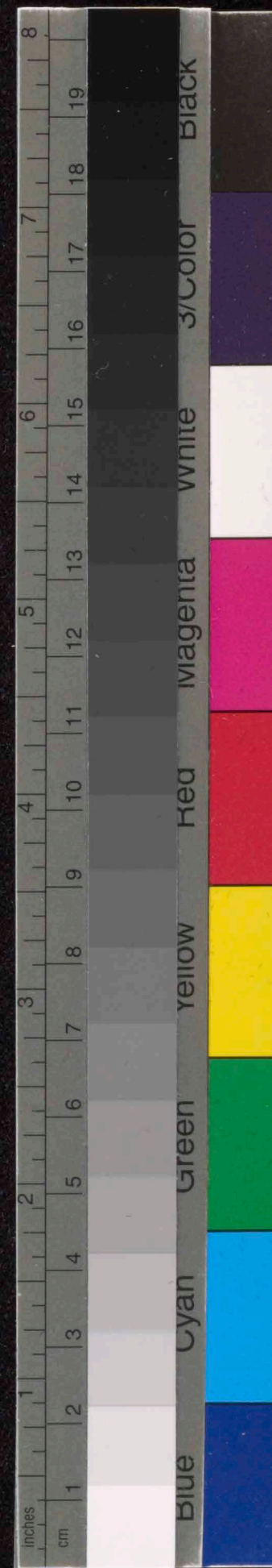
von

Anton Webern

op. 13 No 3

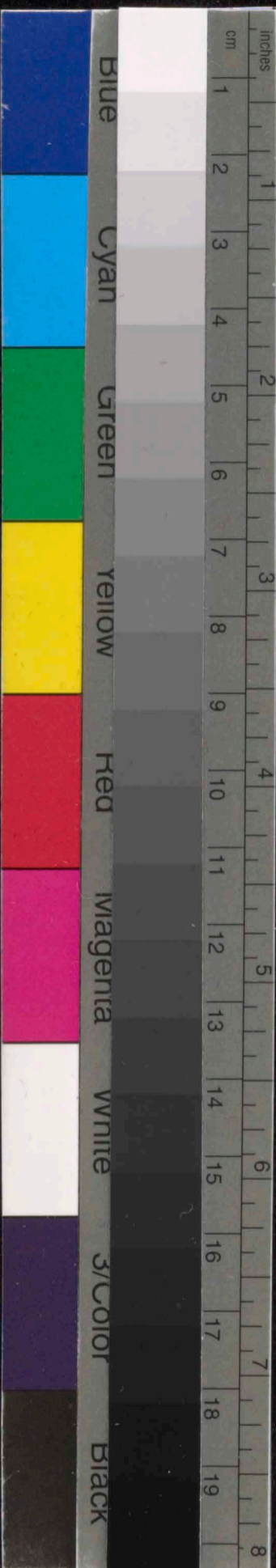


TradeMark
No 3
14 linig

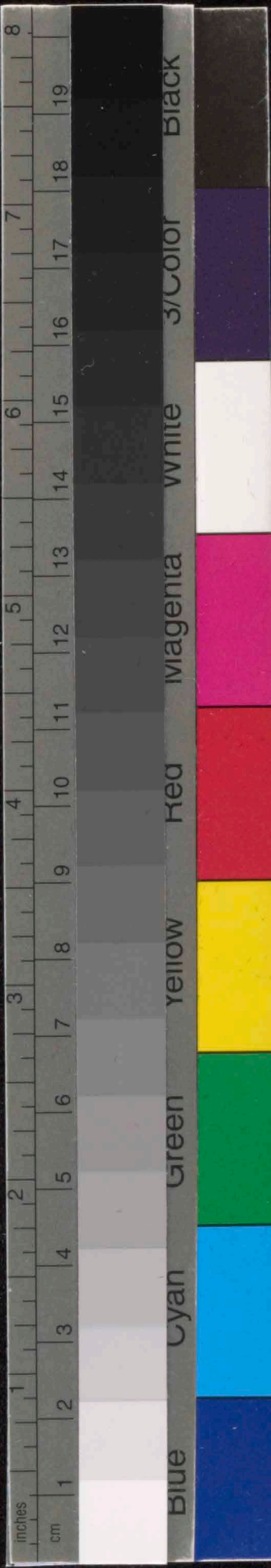


Handwritten musical score for a symphony orchestra and voice. The score is written on ten staves. The instruments are labeled on the left: *Ho. Fe.*, *Hlar. in B.*, *Bp. Ho in B.*, *Trp. in B.*, *Viol. I.*, *Viol. II.*, *Vcllo.*, *Viola.*, *Violoncello.*, and *Bass.*. The vocal line is at the bottom with the lyrics: "Wolend vor maine La- you- Heit- lu-".

Measure numbers 8, 9, 10, and 11 are indicated at the top. Above measure 10, the tempo marking "rit." is written with a dashed line extending to measure 11, where "tempo" is written. The score includes various musical notations such as notes, rests, slurs, and dynamic markings like *pp*, *ppp*, and *ff*. There are also some handwritten annotations and corrections.



Handwritten musical score on 14-line paper, numbered 12, 13, and 14. The score is in 3/4 time and includes vocal lines with lyrics and piano accompaniment. The lyrics are: "Ich sah Jungfr", "im Hain", "winkte mir, wo sie der". The score features various musical notations including triplets, slurs, and dynamic markings such as *ppp*, *pp*, *p*, and *stacc.*



Handwritten musical score for a chamber ensemble, featuring a vocal line and instruments: Flute (Fl.), Clarinet in B (Klar. in B), Bassoon in B (Ff. Kl. in B), Trumpet in B (Trop. in B.), Celesta, Horn (Horn), and Cello/Double Bass (Vcllo/Db.).

The score is divided into three measures, numbered 15, 16, and 17. The key signature is one flat (B-flat major or D minor), and the time signature is 3/4.

Measure 15: The vocal line (Re. St.) begins with a melodic phrase marked *pp*. The instruments provide accompaniment, with the Celesta and Cello/Double Bass featuring triplet patterns.

Measure 16: The vocal line continues with a similar melodic phrase, also marked *pp*. The instrumental accompaniment remains consistent.

Measure 17: The vocal line concludes with a phrase marked *pp*. The instruments continue their accompaniment.

Lyrics: The vocal line includes the following German lyrics: "Mit der frischen, was ich befehle, dann aber frische ist. Der".

Performance markings: The score includes various dynamic markings such as *pp* (pianissimo) and *spicc.* (spiccato). There are also slurs and accents throughout the piece.

189 rit. ----- tempo 19 20 21 22

Handwritten musical score for measures 189-22. The score is written on five staves. Measure 189 is marked 'rit.' and measure 19 is marked 'tempo'. The notation includes notes, rests, and dynamic markings such as *ppp*, *p*, and *pp*. There are also some handwritten annotations like 'b1' and '3'.

Melody (Staff 4):
 189: *ppp* *mf*
 19: *f* *p* *pp*
 20: *pp*
 21: *pp*
 22: *pp*

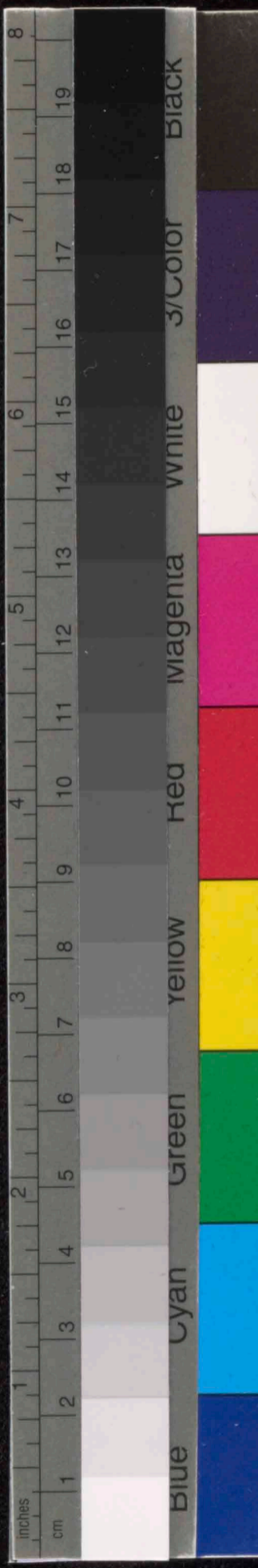
Lyrics:
 189: Mond, der Mond...
 19: und wiegt das Ge-
 20: fühl
 21: zier be-
 22: zu sein, und immer

rit. ----- tempo

Handwritten musical score for measures 23-26. The score is written on three staves. Measures 23 and 24 are marked 'rit.' and measure 25 is marked 'tempo'. The notation includes notes, rests, and dynamic markings such as *f*, *ppp*, and *pp*. There are also some handwritten annotations like 'Am Hug' and 'spicc.'

Melody (Staff 1):
 23: *f*
 24: *ppp*
 25: *f*
 26: *pp*

Lyrics:
 23: Am Hug
 24: Am Hug
 25: spicc.



Handwritten musical score for a symphony orchestra and voice. The score is divided into measures 23, 24, 25, and 26. The instruments listed are Kl. Fe (Flute), Kl. in B (Clarinet in B), Bp. Kl. in B (Bassoon in B), Fag. in B (Bassoon in B), Cellos (Cello), Horn, and Voice.

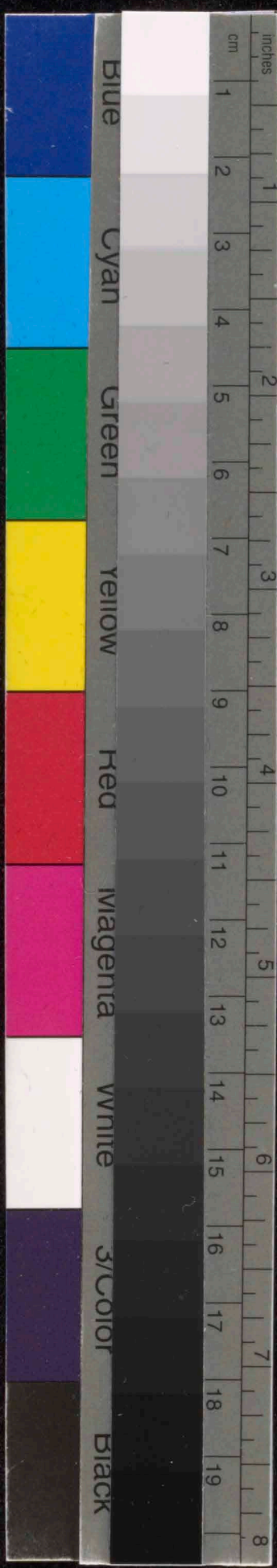
Measure 23: Flute (Kl. Fe) has a rest. Clarinet (Kl. in B) and Bassoon (Bp. Kl. in B) play chords. Bassoon (Fag. in B) has a rest. Cello (Cellos.) has a rest. Horn (Horn) has a rest. The voice part begins with the lyrics "Zu mal".

Measure 24: Flute (Kl. Fe) has a rest. Clarinet (Kl. in B) and Bassoon (Bp. Kl. in B) play chords. Bassoon (Fag. in B) has a rest. Cello (Cellos.) has a rest. Horn (Horn) has a rest. The voice part continues with "wirst du mir so fern."

Measure 25: Flute (Kl. Fe) has a rest. Clarinet (Kl. in B) and Bassoon (Bp. Kl. in B) play chords. Bassoon (Fag. in B) has a rest. Cello (Cellos.) has a rest. Horn (Horn) has a rest. The voice part continues with "Zu mal wirst du mir so fern."

Measure 26: Flute (Kl. Fe) has a rest. Clarinet (Kl. in B) and Bassoon (Bp. Kl. in B) play chords. Bassoon (Fag. in B) has a rest. Cello (Cellos.) has a rest. Horn (Horn) has a rest. The voice part continues with "Zu mal wirst du mir so fern."

Dynamic markings include *pp*, *sfz*, *f*, and *staccato*. The tempo marking *drängend* is present above measure 25. The score concludes with a double bar line and a fermata over the final notes.



Ry

F^o 4.

Ein Winterabend.

(Georg Trakl)

für

Gesang und Orchester

von

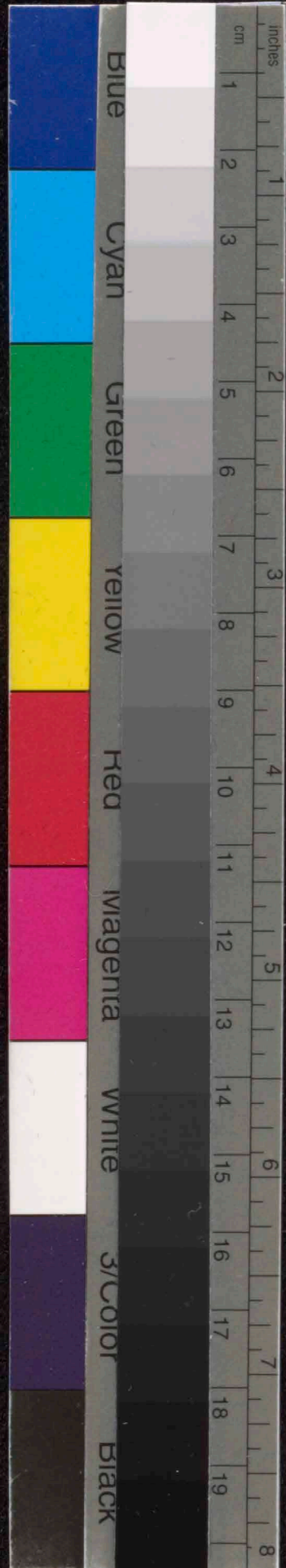
Anton Webern

Op. 13. F^o 4.



Celesta und Harfe 2. System

2. Systemansposition



Musical score manuscript page with 18 empty staves. The page contains handwritten text in the center: "Celesta und Harfe 2. System" and "2. Systemansposition".

Ein Winterabend

(Georg Trakl)

Anton Webern, op. 13, Nr. 4.

Sehr ruhig (♩ = ca 56)

Klar. (B.)

Komp. u. B. mit Dämpfer

Posaune mit Dämpfer

Celesta

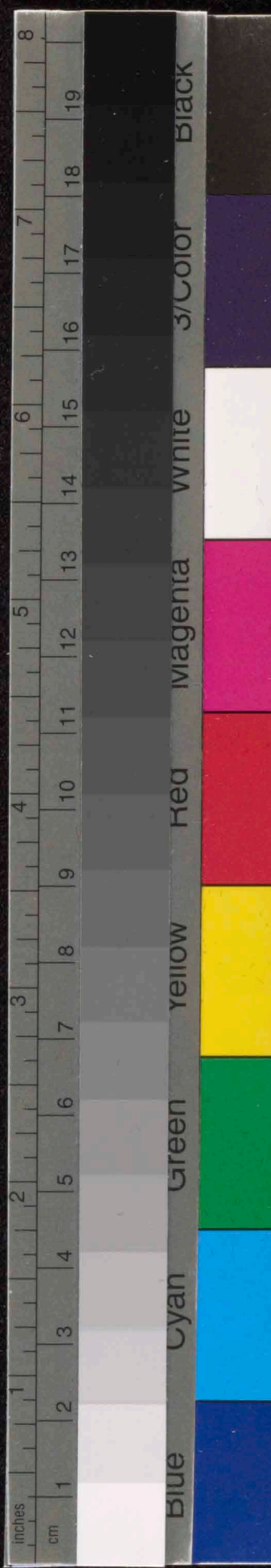
Harfe

Gesang

Wenn der Schnee ans Fenster fällt, lang — die Abendglocke

Solo-Bratsche ohne Dämpfer

Solo-Cello mit Dämpfer.



5 6 7

Klar (B.)
früchtig *ppp*

Tromp. (B.)
mit Dämpfer *pp*

Posaune
m. Dpf. *ff*

Clarinete
f

Faß

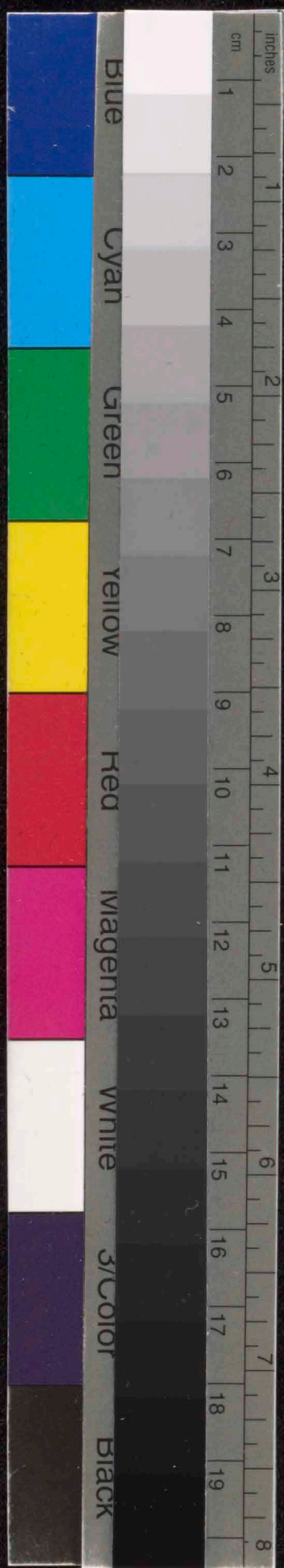
Gesang
läu--tet, Vie-len ist der Tisch berei-tet und das

Geige
m. Dpf. *pp* *warm.*

Bratsche
o. Dpf. *pp* *Dämpfer auf*

Vcl.
m. Dpf. *andert zart.* *ppp*

C. B.
mit Dämpfer.



Klar
Tromp
mit D.
Posaun
m. Dpf.
Klar
Gesang
Geig
m. D.
Vcl.
m. D.
C. B.
m. D.

8 9 10 11

Klar. (B.) *pp* *f* *flüchtig*

Tromp. (B.) *mit Dpf.* *pp* *f* *espr.* *mf* *f*

Posaune *mit Dpf.* *mf* *f*

Klarf.

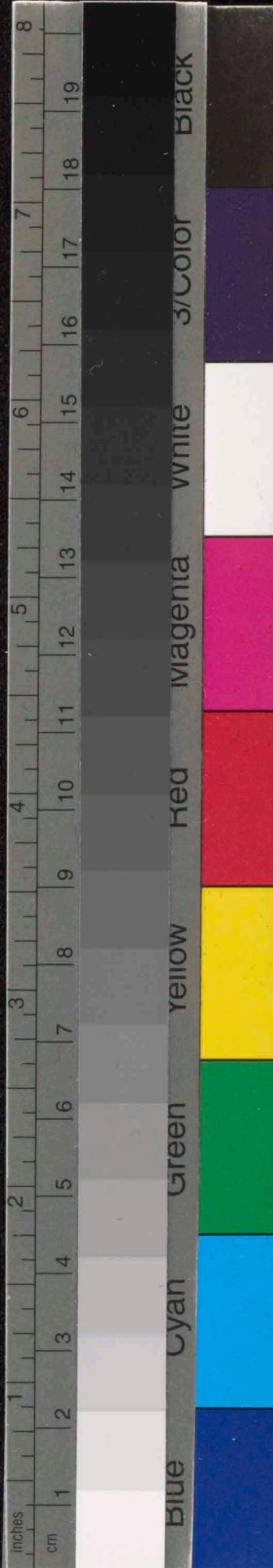
Gesang. *p*
 Haus ist wohl bestellt. Man... cher auf der Wom- den- schaft kommt ans Tor

Geige *mit Dpf.* *f* *pp* *pp*

Vcl. *mit Dpf.* *f* *Br.* *(mit Dämpfer)* *pp*

C. B. *mit Dpf.* *pp* *Vel.* *pp*

C. B. *pp*



etwas lebhafter (♩ = ca 60)

12 13 14

klar. (B.)
ppp > ppp
sehr zart. 4/4

B. klar. (B.)
ppp > ppp
ppp

Tromp. (B.)
m. Spf.
p

Posaune
m. Spf.
p

Harfe.

Gesang
auf dunk- - len Pfa- - den. Gol- - den blüht

sehr zart. 4/4

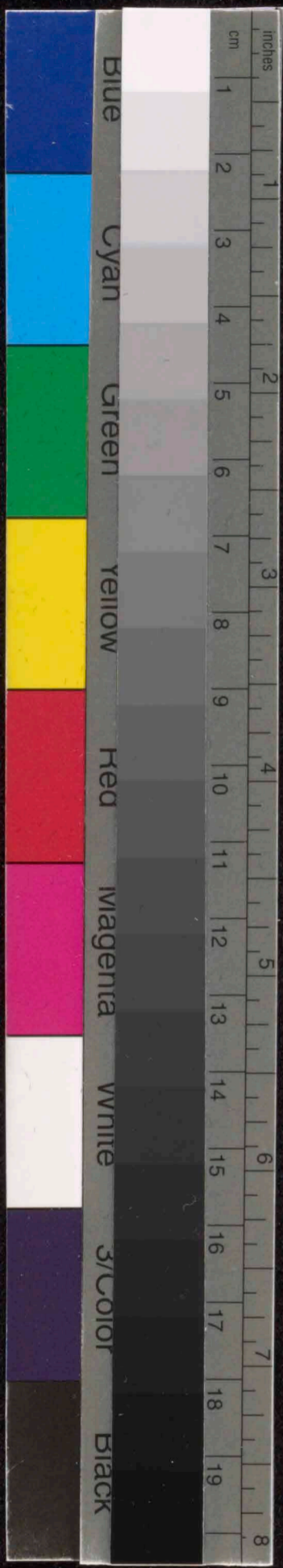
Geige
ohne Spf.
Dämpfer ab

Viola
m. Spf.
stacc.

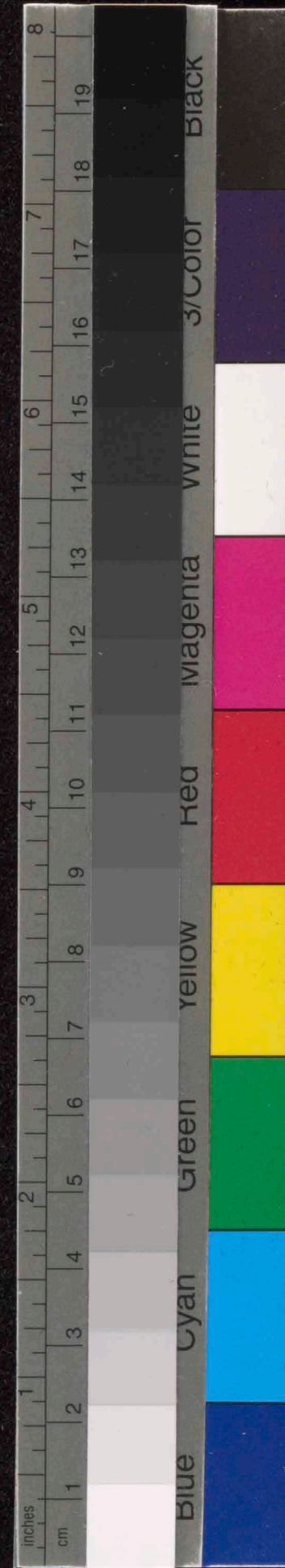
Vcllo
m. Spf.
stacc.

l. B.
m. Spf.
stacc.

sehr zart. 3 spiccato.



Handwritten musical score for measures 15-18. The score includes parts for Klar. (B.), B. Klar. (B.), Tromp. (B.) mit Dpf., Posaun m. Dpf., Gesang, Geige ohne Dpf., Bratsche m. Dpf., and Vlo. m. Dpf. The vocal line includes the lyrics: "der Baum der Gna-den aus der Er-de küh-lem Saft." The score features various musical notations such as dynamics (pp, p, f, ff), articulation (accents), and performance instructions like "rit." and "esp.". Measure numbers 15, 16, 17, and 18 are clearly marked above the staves.



wieder sehr ruhig (♩ = ca 56) rit - - - wieder etwas lebhafter (♩ = ca 60) rit - - -

19 20 21 22

Klar. (B)

B. Klar. (B)

Tromp. (B)
m. Spf.

Posaune
m. Spf.

Celesta

Klarfe

Gesang

Wan- de- rer tritt still herem Schmerz versteinerte die Schmer- le. Da er -

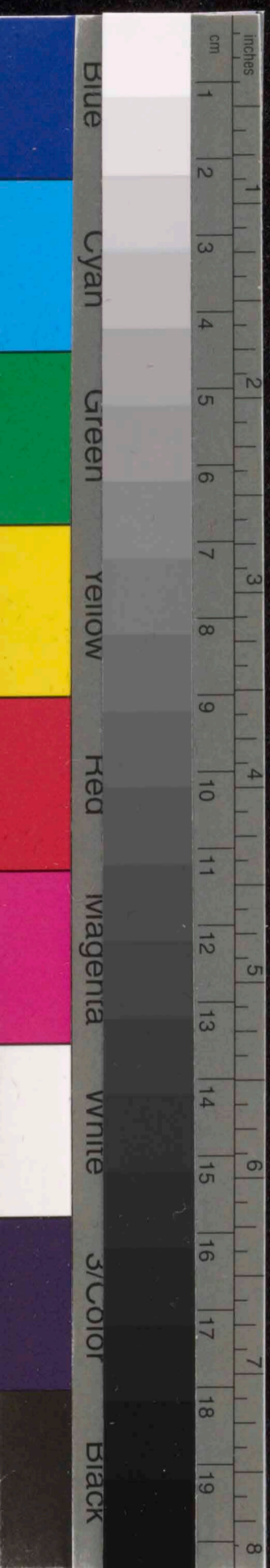
Geige
u. Spf.

Dämpfer auf

Violine
m. Spf.

Viola
m. Spf.

C. B.
m. Spf.



Klar. (B)

B. Klar.

Tromp. m. Spf.

Posaune m. Spf.

Celesta

Klarfe

Gesang

Geige m. Spf.

Viola m. Spf.

Viola m. Spf.

C. B. m. Spf.

äußerst ruhig (♩ = ca 50) rit - - - - - ♩ = ca 40

Handwritten musical score for woodwinds and strings. The score is divided into four measures, numbered 23, 24, 25, and 26. The instruments listed are:

- Klar. (B.)
- B. Klar. (B.)
- Tromp. (B) m. Spf.
- Posaune m. Spf.
- Celesta
- Korfe

The notation includes various dynamics such as *ppp*, *pp*, and *ppp*, and includes triplets and slurs. The time signature changes from 2/4 to 4/4 between measures 24 and 25.

Gesang

glänzt in rei - ner Fleb-le auf dem Tische Brot und Wein.

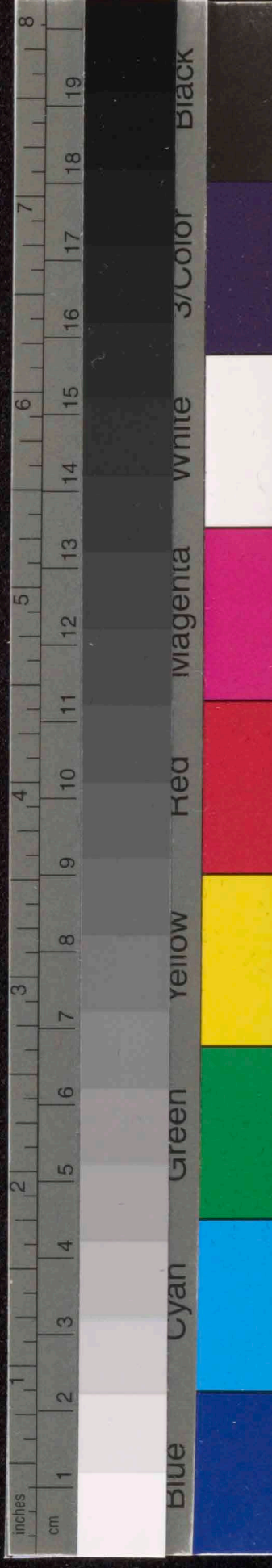
Handwritten musical score for the vocal line. It features a melodic line with lyrics written below. Dynamics include *pp* and *ppp*. There are triplets and slurs in the notation.

Handwritten musical score for strings. The instruments listed are:

- Geige m. Spf.
- Viola m. Spf.
- Vcllo m. Spf.
- Ch. B. m. Spf.

The notation includes dynamics such as *ppp* and *pp*, and includes triplets and slurs. The word "verklungert" is written in the string parts. The time signature changes from 2/4 to 4/4 between measures 24 and 25.

TradeMark
No 3
14 linig



A series of 18 horizontal musical staves on a page, each consisting of five lines. The staves are empty and arranged vertically down the page.



