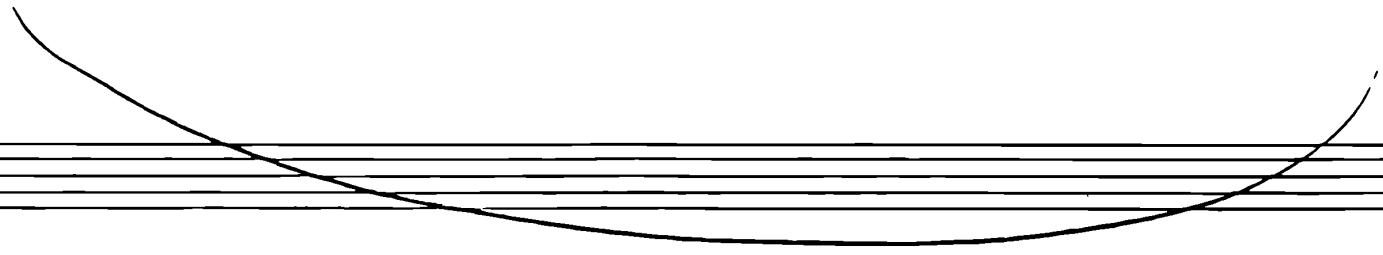


= Contrabasso = $ff^o = t.$

Preludio, Corale e Fuga



= Op.^{no} Respighi =

2
Gambellini *Je*

Preludio

Lento

Sivisi Con Tordina

Presto

pizz. pp.

2^a (1)

3² (2)

Gambini $\frac{3}{4}$

3

arco
mf-

34/ (3)
p-
Via Sordina

f-

pp 1 2 3 4 5
(4) arco
Due Toli
pp.
3
pizz.
Tutti
pizz.

arco
cresc.

f- 1 2 3

4 5 6 7 8 9 10 11 12

13
5
rit: molto

Corale
Lento

4

(5)

Con Sordina

Lento
affai

(8)

pp. divisi

1 2 3 4 5 fine. - 6 7

mf

8 9 10 11 12 13

pp.

1 2 5

ppp.

Via Sordina

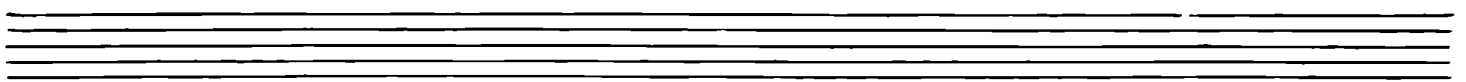
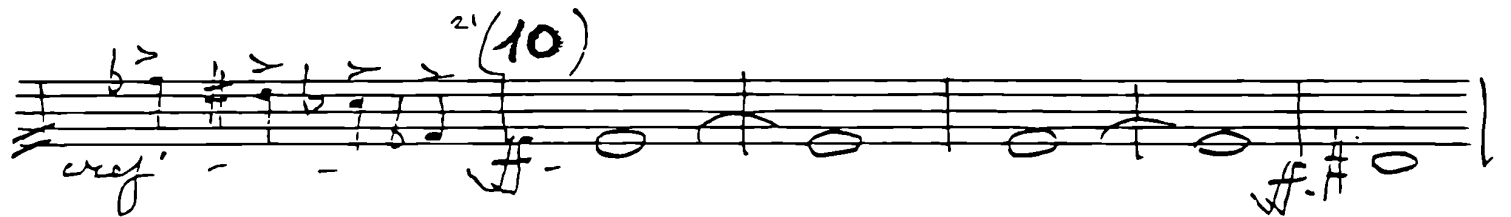
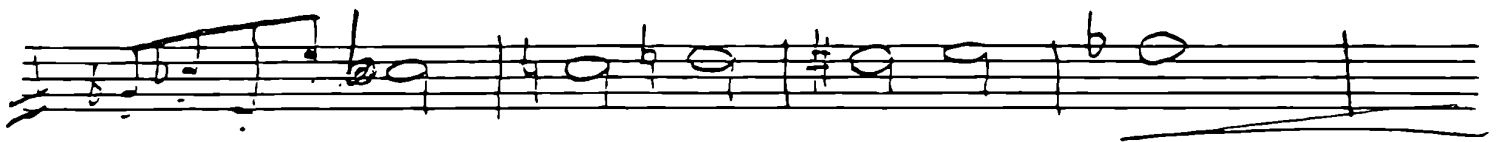
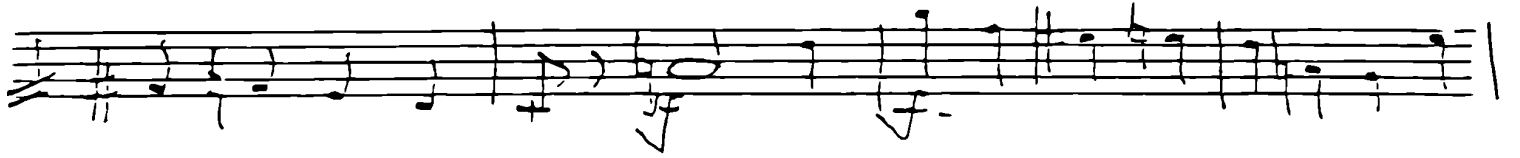
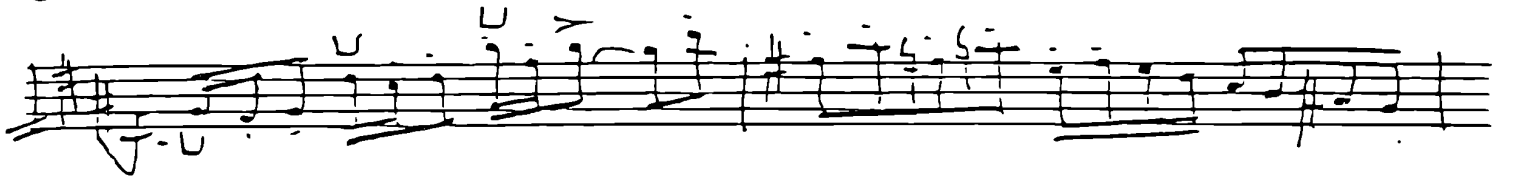
Fragor

all.

9

Segue

6



Handwritten musical notation on a single staff. It begins with a *mf* dynamic marking. The word *arco* is written above the staff. The notation includes a half note followed by a series of quarter notes, ending with a fermata.

Handwritten musical notation on a single staff. It starts with a *pp* dynamic marking and a *pizz.* (pizzicato) instruction. A first ending bracket labeled *1^o Tempo* spans the first two measures. A measure number *15* is written above the staff. The notation consists of eighth notes.

Handwritten musical notation on a single staff. It continues with eighth notes and concludes with a *3* (triple) marking over the final measure.

Handwritten musical notation on a single staff. It begins with the tempo marking *Molto* and a *ff* dynamic marking. A measure number *6* is written above the staff. The word *pizz.* is written above the staff. A measure number *16* is written above the staff. The notation includes a half note followed by quarter notes.

Handwritten musical notation on a single staff. It starts with a *mf* dynamic marking. The notation features a series of eighth notes with a slur, followed by a half note.

Handwritten musical notation on a single staff. It begins with a *f* dynamic marking. The notation includes a series of eighth notes with a slur, followed by a half note.

Handwritten musical notation on a single staff. It starts with a *f* dynamic marking. The notation features a series of eighth notes with a slur, followed by a half note.

Handwritten musical notation on a single staff. It begins with a *f* dynamic marking. The notation includes a series of eighth notes with a slur, followed by a half note.

Handwritten musical notation on a single staff. It starts with a *f* dynamic marking. The notation features a series of eighth notes with a slur, followed by a half note.

Handwritten musical notation on a single staff. It begins with a *f* dynamic marking. The notation includes a series of eighth notes with a slur, followed by a half note. A measure number *20* is written below the staff.

Presto (17)

24 (18) *2*
Fin mosso

puer:

v. 5.

10

arco *rit.* *rit.*

largamente

(19)

(20)

ff. *rit.*

f. *arco* *dim.*

Lento assai *Sivisi* *pp.* *Unisi*

dim.

pp.

ppp *Sivisi* *ppp - il più possibile* *(21)*

cres.

mf. *cres.* *f.*