

Antonio Salieri (1750 - 1825)

SINFONIA in RE

"Giorno onomastico,"
per orchestra da camera

Revisione di RENZO SABATINI

FAGOTTO I.

Allegro, quasi Presto

The musical score for Bassoon I consists of ten staves of music. The key signature is one sharp (F#) and the time signature is 2/4. The score begins with a forte (f) dynamic. Measures 1-5 are marked with a '2' above the staff, indicating a second ending. Measures 6-10 are marked with a '10' above the staff. Measures 11-15 are marked with a '15' above the staff. Measures 16-20 are marked with a '20' above the staff. Measures 21-25 are marked with a '25' above the staff. Measures 26-30 are marked with a '30' above the staff. Measures 31-35 are marked with a '35' above the staff. Measures 36-40 are marked with a '40' above the staff. Measures 41-45 are marked with a '45' above the staff. Measures 46-50 are marked with a '50' above the staff. The score includes various dynamics such as f, sf, p, and sfz, as well as articulation marks like accents and slurs. A triplet of notes is marked with a '3' and 'dim.' in measure 48.

2 55



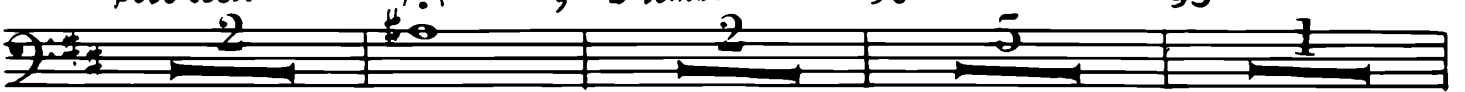
70



75



85



100



105



110



120



125 130

135 140 *f*

145 *f*

150 *f ff*

155 *f* 3

160 *p*

165 170 175 Trombe *mf* *f*

180

185 190 *ff*

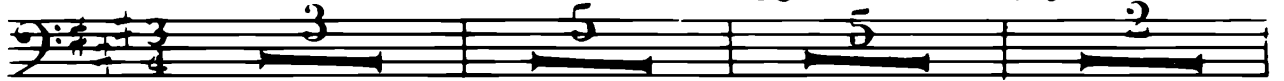
195

Larghetto

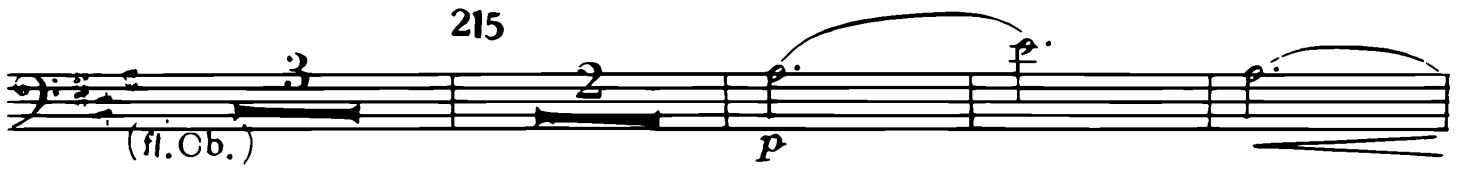
200

205

210



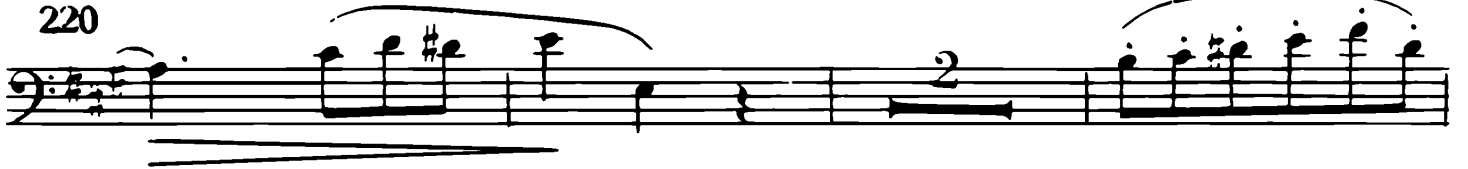
215



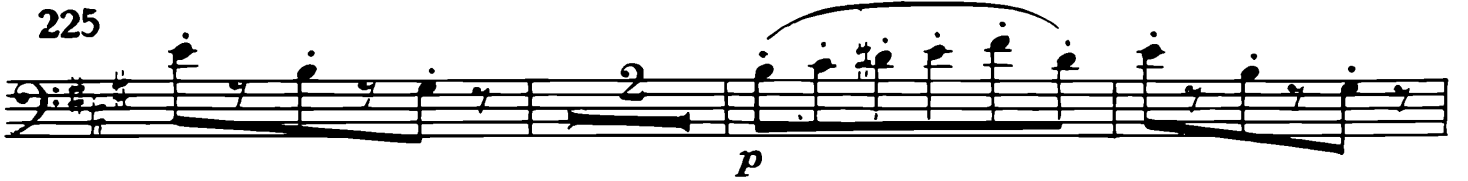
(fl. Ob.)

p

220



225



p

230



fp

fp

mf

sf

235



sf

fp

240



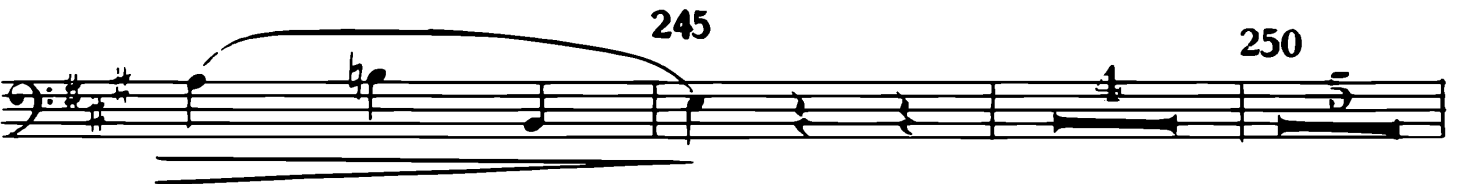
fp

sf

sf

245

250



255



mf dolce ma cantato

sf

260

sf

265

sf *p*

270

mf *f*

280

p

285

fp *fp* *mf* *sf*

290

sf *fp*

295

fp *sf* *sf*

300

p

305

pp

MINUETTO
Non tanto allegro

310



315



320



f



325



330



335



Fine

TRIO



340



345



350



Minuetto D.C.

355 360

365

mp cresc. *f*

370

375

380 385

390 395 400 405 410

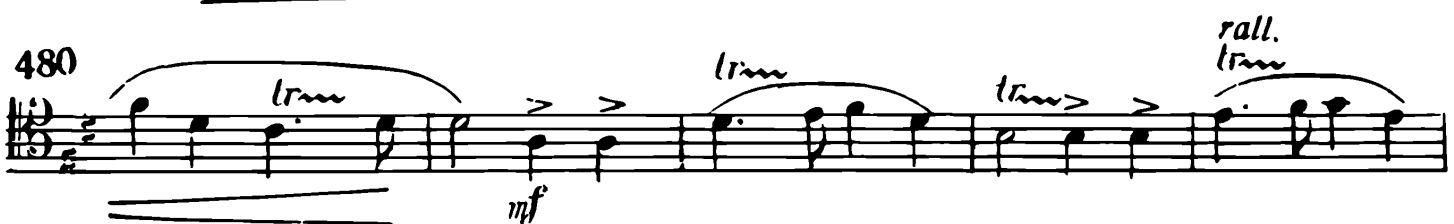
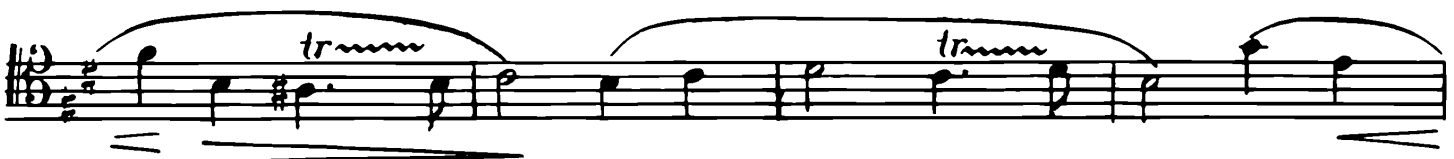
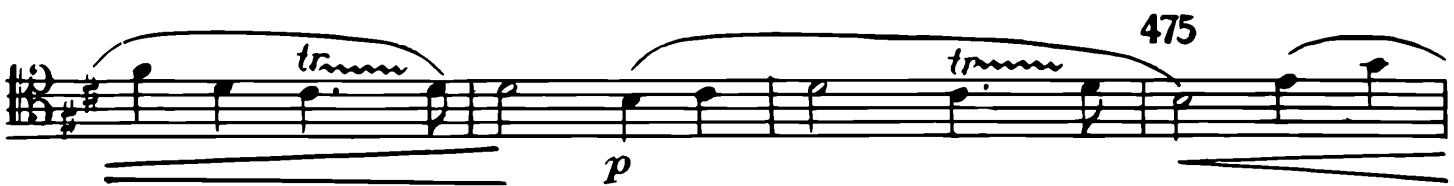
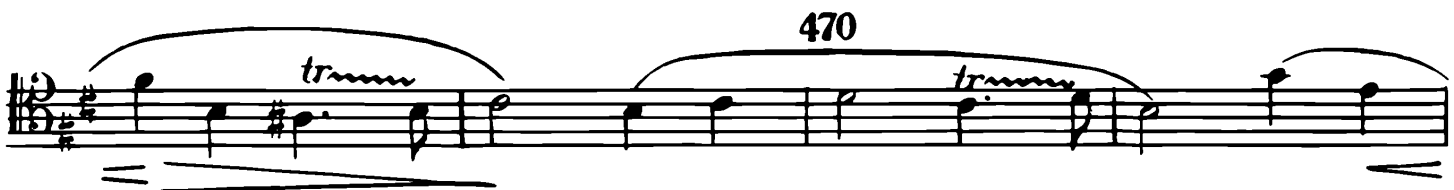
415 420

425

Sempre lo stesso movimento

f

430



a tempo
trinu
p

490
trinu
mf
trinu
rall.
trinu

a tempo
trinu
p
 495
trinu
trinu

500 505
f p
f p

510
f p
f p

515
f p *f p* *f p* *f p* *f p*

520
f p *f p*

525
f p *f p* *f p* *f p*

f

10

530

535

Crm.

p

540

545

mf cresc.

f

550

555

560

a tempo

565

trmn

mf

trmn

570

ff