

# Credo

VIOLINI

A. Vivaldi  
Edited and translated by  
Clayton Westermann

## 1. Credo

Allegro

[f]

5

10

15

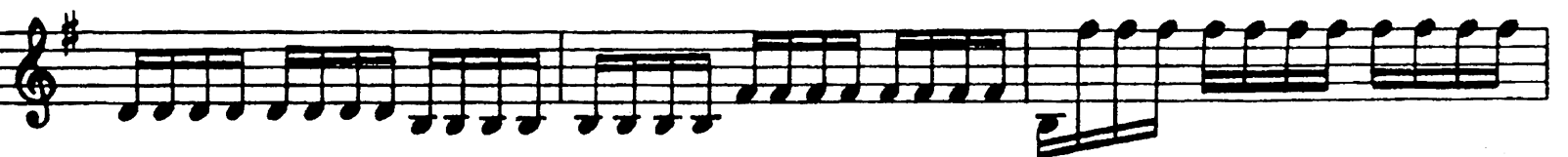
20

25

30

35

VIOLINI



VIOLIN I

70

75

80

85

90

95

## 2. Incarnatus

Adagio

[mp]

5

10

15

*p*

## 3. Crucifixus

Largo

2

5

[p]

10

15

2

20

VIOLINI

25



30



4. Et resurrexit

Allegro



5



10



15



VIOLINI

20



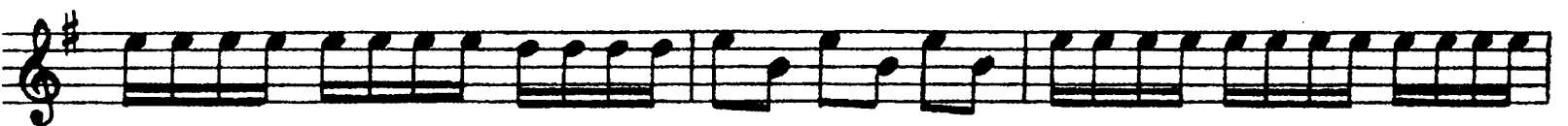
25



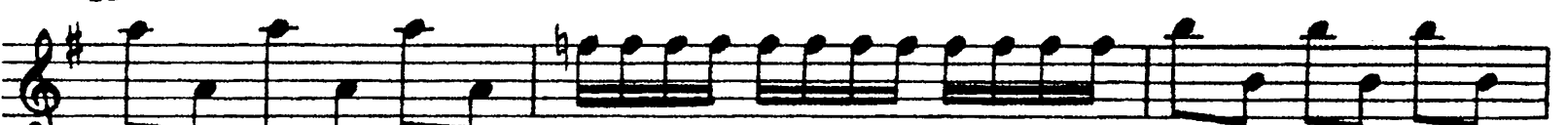
30



35



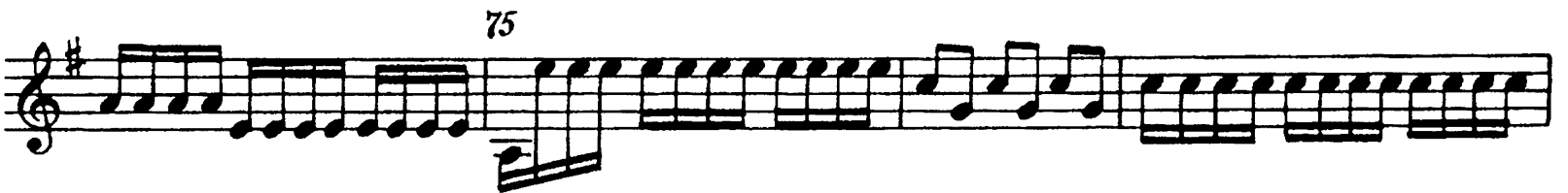
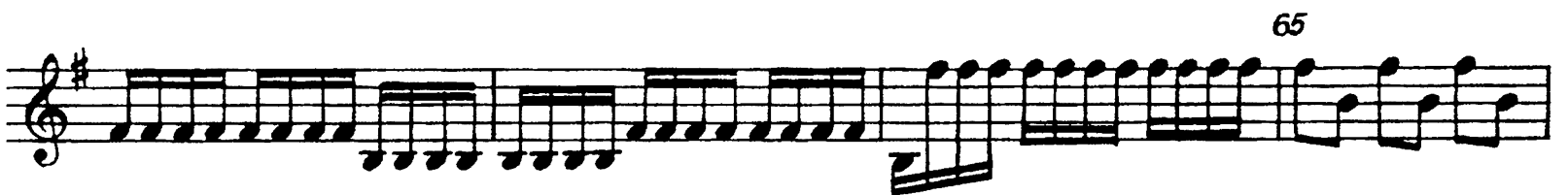
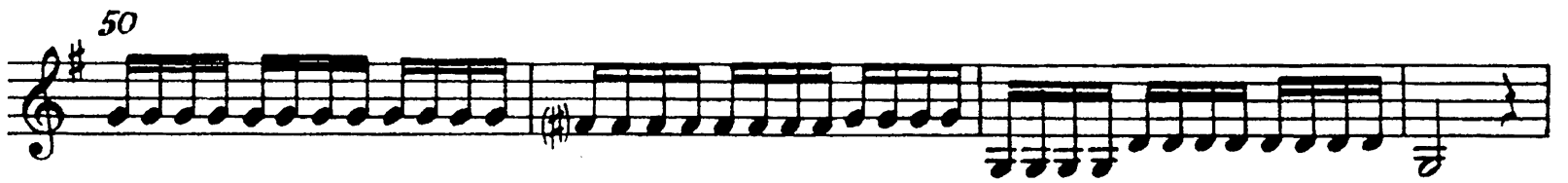
40



45



VIOLINI



VIOLINI

This page of a musical score for Violin I contains measures 90 through 130. The music is written on ten staves, each beginning with a treble clef and a key signature of one sharp (F#). The notation is dense, featuring a variety of rhythmic patterns including eighth and sixteenth notes, often beamed together in groups. Measure numbers are printed above the staves at intervals of five measures: 90, 95, 100, 105, 110, 115, 120, 125, and 130. The piece concludes with a double bar line at the end of the final staff.