

Oboe 1

**SENSEMAYÁ**  
*(Canto para matar una culebra)*

Corrected as of 12/29/2023

SILVESTRE REVUELTAS  
Edited by Tito Muñoz

$\text{♩} = 100$   
 $\left(\frac{2}{4} \frac{3}{8}\right)$

4 1 4 2 4 3 4

4 5 6 4

Eng. Hn.

7 8 Tbn. 1

*mf*  $\leftarrow$  *f*

9

10

11 12 13 Fls. 1, 2

*ppp*

14 15

*fff*  $\leftarrow$  *sf*  $\leftarrow$

16

*ff* *ff*  $\leftarrow$  *fff* *sff*  $>$  *p*

17 18

4 4

*sostenuto ff*

19 *pp* *mf*

20 *f* *ff*

21 *ff* < 22 *fff*

23  $(\frac{3}{4} + \frac{3}{8})$  *fff* *sfff* > *ppp* > 24 *fff* > *ppp* > *fff* > *ppp* >

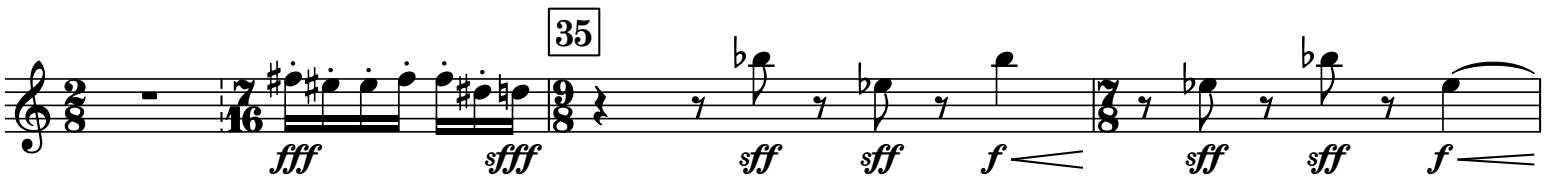
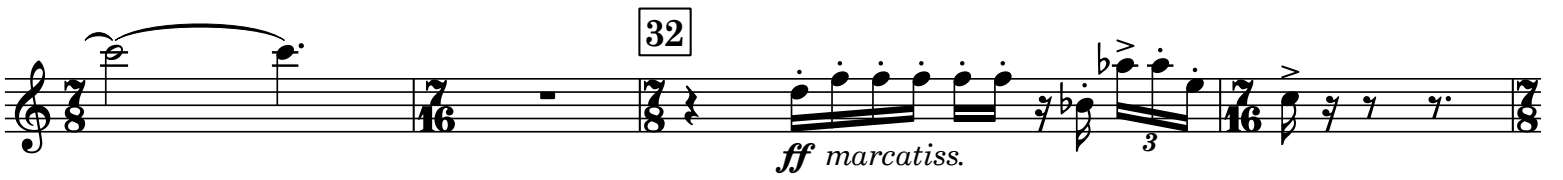
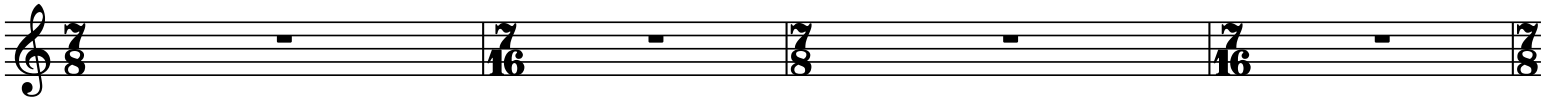
25  $(\frac{2}{4} + \frac{3}{8})$  *pp* < *fff* < *sfff* *ff* *ff* 4

26 2 *ff* *sff* 27 *mf* < *p* < *pp*

28 *ff* *sff* *f*

29 *ff* *sff* *fff* *sff*

30 *fff* *sff*



Musical staff with dynamics: *sf* *molto cresc.* *sf* *sf*

37

Musical staff with dynamics: *ff*

38

Musical staff with dynamics: *fff*

40

41

42

Musical staff with dynamics: *ff*

G. P.

Musical staff with dynamics: *fff*