

# Konzert d-Moll

für zwei Violinen, Streicher und Basso continuo

BWV 1043

1. Vivace

Johann Sebastian Bach

The image shows a page of musical notation for the first movement of the Concerto in D minor, BWV 1043, by Johann Sebastian Bach. The score is written for Cello and Bass in a single bass clef. It begins with a treble clef and a key signature of one flat (B-flat). The tempo is marked '1. Vivace'. The score consists of 12 staves of music, with measure numbers 4, 7, 12, 15, 18, 21, 25, 29, 34, 38, 43, and 47 indicated at the start of each line. The notation includes various rhythmic values, accidentals, and dynamic markings such as *p* (piano) and *f* (forte). The piece concludes with a final measure on the 12th staff.

51 *p*

55 *f*

58 *p*

62

65

68

71

74

77

80

83 *f*

86

2. Largo ma non tanto

*poco p*

4

8

12

16

*pianissimo* *poco p*

19

*pianissimo* *poco p*

23

27

31

35

39

43

47

*pianissimo* *f*

3. Allegro

5

10

16

20

25

31

37

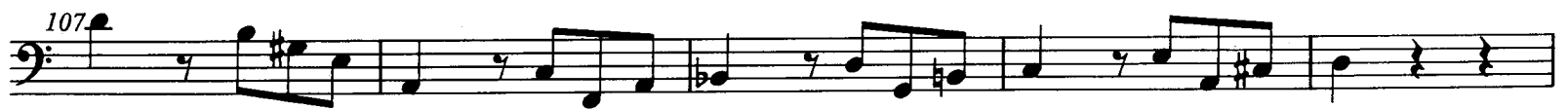
42

47

53

60

Violoncello e Basso



112



117



122



126



129



133



137



141



145



149



152



# Konzert d-Moll

für 2 Violinen, Streicher und Basso continuo  
BWV 1043

I. Vivace  
(Tutti)

Johann Sebastian Bach  
Continuo - Aussetzung: Ernst R. Barthel

Viol. conc. I, II  
Viol. I, II  
Va., Vc.  
Violone

Musical notation for measures 1-3 of the Cembalo part. The treble clef staff contains chords and single notes, while the bass clef staff features a continuous eighth-note accompaniment.

Musical notation for measures 4-6 of the Cembalo part. Measure 4 is marked with a '4' above the treble staff. The bass clef staff continues with eighth-note accompaniment.

Musical notation for measures 7-11 of the Cembalo part. Measure 7 is marked with a '7' above the treble staff. Measure 10 has a first ending bracket labeled '1' above the treble staff.

Musical notation for measures 12-15 of the Cembalo part. Measure 12 is marked with a '12' above the treble staff. The bass clef staff has a '2' above it in measure 14.

Musical notation for measures 16-18 of the Cembalo part. Measure 16 is marked with a '16' above the treble staff. The bass clef staff has a '5' above it in measure 18.

Musical notation for measures 19-21 of the Cembalo part. Measure 19 is marked with a '19' above the treble staff. The bass clef staff has a 'b' below it in measure 20.