

**ANTONÍN
DVOŘÁK**

CZECH SUITE

Op. 39

*Critical Edition based on the Composer's Manuscript
Edited by Otakar Šourek*

FULL SCORE

CZECH SUITE

*Critical edition based on original sources and prepared for the press by the Editing Board for the Works of Antonín Dvořák: Otakar Šourek, Chairman - Jan Hanuš, Chief Editor - Dr Jiří Berkovec
Dr Antonín Čubr - Ladislav Láška - Otakar Nebuška - Antonín Pokorný - Karel Šolc.*

The CZECH SUITE for small orchestra was the final form given to the composer's original intention to write a new *serenade* (the third after that for strings, op. 22, and for wind instruments, op. 44) a pencil sketch of which, entitled "Serenade", was begun on March 4th 1879, when the composer was still engaged on the string quartet in E flat major, op. 51. Of the two movements in sketch (Tempo di Marcia and Minuet), however, Dvořák made no further use, but immediately after finishing the quartet on March 28th began writing a completely new composition. This was also in serenade form for small orchestra, but, in the undated manuscript, bears the title "*Suite*" and the misleading opus number 39, under which incomplete description it was published by Schlesinger, Berlin, in 1881. (See Otakar Šourek: The Life and Works of Antonín Dvořák, II., 2nd ed., p. 63—69).

Dvořák himself gave the composition the title of "*Czech Suite*" when it was first performed on May 16th 1879, in Prague, by the orchestra of the Czech Interim Theatre, conducted by Adolf Čech. The title was aptly chosen as three of the five movements are versions of typical Czech folk-dances (Polka, Sousedská, Furiant), while the remaining two (the introductory Pastorale and the Romance) are specifically Czech in expression. In Czechoslovakia the work has long been known as the Czech Suite under which title also this first Czech edition appears.

Translated by R. Samsour

Otakar Šourek

DURATA CCA 22.50'

I. PRELUDIUM-PASTORALE (3.6')	I
II. POLKA (4.7')	9
III. SOUSEDSKÁ - MINUETTO (4.2')	20
IV. ROMANCE - ROMANZA (4.2')	31
V. FINALE - FURIANT (5.8')	40

ORCHESTRA

Flauti I/II - Oboi I/II - Corno inglese (Corno di bassetto ad lib.)

Clarinetti I/II - Fagotti I/II - Corni I/II

Trombe I/II - Timpani - Archi

I. PRELUDIUM (PASTORALE)

Allegro moderato $\text{♩} = 100$

ANTONÍN DVORÁK, op. 39 (1841—1904)

Oboi I.II. *a 2*
Fagotti I.II.
Corni I.II.D
I. Violini
II. Violini
Viole
Violoncelli *div.*
Contrabassi

Ob.I. II.
Fag.I. II.
Cor.I. II.D
I. Viol.
II. Viol.
Vle
Vlc.
Cb.

10 *cresc.*

Ob.I.II. *pp* *cresc.* *dim.*

Fag.I.II. *dim.*

Cor.I.II.D

I. *pp* *cresc.* *dim.*

Viol. II. *pp* *cresc.* *dim.*

Vle *cresc.* *dim.*

Vlc. *cresc.* *dim.*

Cb. *pizz.* *p* *arco* *p*

A 15

Ob.I.II. *pp* *cresc.* *dim.*

Fag.I.II. *pp* *cresc.* *dim.*

Cor.I.II.D *pp* *cresc.* *dim.*

I. *pp* *cresc.* *dim.*

Viol. II. *pp* *cresc.* *dim.*

Vle *pp* *cresc.* *dim.*

Vlc. *pp* *cresc.* *dim.*

Cb. *pp* *cresc.* *dim.*

20 a2

Ob.I.II. *pp*

Fag.I.II. *pp*

Cor.I.II.D Solo *pp*

I. Viol. *pp*

II. *pp*

Vle *pp* div.

Vlc. *pp*

Cb. *pp*



a2 25

Ob.I.II.

Fag.I.II.

Cor.I.II.D *p*

I. Viol.

II.

Vle div.

Vlc.

Cb.

Ob. I. II. **B** ^{a2} 30

Fag. I. II.

Cor. I. II. D

I. Viol.

II. Viol.

Vle.

Vlc.

Cb.

Ob. I. II. *p* *dim.* *pp* 35

Fag. I. II. *p* *dim.* *pp*

Cor. I. II. D *p* *dim.* *pp*

I. Viol. *p* *pp*

II. Viol. *p* *dim.* *pp*

Vle. *p* *dim.* *pp*

Vlc. *p* *dim.* *pp*

Cb. *p* *dim.* *pp*

Ob.I.II. *pp* C

Fag.I.II. *pp*

Cor.I.II.D *pp* *p̄*

I. Viol. *ppp* *pp*

II. *pp*

Vle. *[pp]*

Vlc. *ppp* *div.* *pp*

Cb. *pp*

Ob.I.II. 40 *p*

Fag.I.II. *[p]* *p*

Cor.I.II.D *p*

I. Viol. *p*

II. *p*

Vle. *p*

Vlc. *p*

Cb. *p*

Ob.I.II. 45 *cresc.* a 2

Fag.I.II. *cresc.*

Cor.I.II.D *cresc.*

I. Viol. *cresc.*

II. *cresc.*

Vle *[p]cresc.*

Vlc. *cresc.*

Cb. *cresc.*

Ob.I.II. *ff* *dim.* 50 *p*

Fag.I.II. *ff* *dim.* *p*

Cor.I.II.D *ff* *dim.* *p*

I. Viol. *ff* *dim.* *p*

II. *ff* *dim.* *p*

Vle *div.* *ff* *dim.* *p*

Vlc. *ff* *dim.* *p*

Cb. *ff* *dim.* *p*

D

Ob.I.II. *pp*

Fag.I.II. *pp*

Cor.I. II.D

I. Viol. *pp*

II.

Vle *pp*

Vlc. *pp*

Cb.

poco a poco ritard.

55

Ob.I.II. *pp* *p*

Fag.I.II. *pp* *p*

Cor.I. II.D *pp*

poco a poco ritard.

I. Viol.

II.

Vle *pp* *pp*

Vlc. *pp* *pp*

Cb. *pp*

quasi Andante

Ob. I.II. *pp* *morendo* 60 65

Fag. I.II.

Cor. I.II.D

I. Viol. *pp* [*morendo*]

II. Viol.

Vle.

Vlc.

Cb.



E in tempo

Ob. I.II. *pp* 70

Fag. I.II. *pp*

Cor. I.II.D *pp*

I. Viol. *pp* in tempo

II. Viol. *pp*

Vle. *pp*

Vlc. *pp*

Cb.

II. POLKA

Allegretto grazioso ♩ = 92

Oboi I. II.

Fagotti I. II.

Corni I. II. D

I. Violini

II. Violini

Viole

Violoncelli

Contrabassi

5

p

p

p

p

p

[sim.]

Ob. I. II.

Fag. I. II.

Cor. I. II. D

I. Viol.

II. Viol.

Vle

Vlc.

Cb.

10

p

p

p

p

p

Ob. I. II. *f* *drum* 15 *p* *drum*

Fag. I. II. *f* *drum* *p* *drum*

Cor. I. II. D *a2* *fz* *fz* *fz* *fz* *p*

I. Viol. *div. f* *drum* *p*

II. *f* *drum* *p*

Vle *f marcato* *p*

Vlc. *f marcato* *p*

Cb. *f* *p*

Ob. I. II. *pp* *drum* 20 *ff* *drum*

Fag. I. II. *pp* *drum* *ff* *drum*

Cor. I. II. D *pp* *ff*

I. Viol. *pp* *drum* *ff*

II. *pp* *drum* *ff*

Vle *pp* *drum* *ff*

Vlc. *pp* *drum* *ff*

Cb. *pp* *drum* *ff*

40

Ob.I.II. *dim.*

Fag.I.II.

Cor. I. II. D

I. *fz*

Viol. II. *fz*

Vle *p*

Vlc. *fp*

Cb. *p*

dim. *p* *fp* *fp* *dim.*

45 50

Ob.I.II.

Fag.I.II. *pp*

Cor. I. II. D

I. *ppmorendo*

Viol. II. *ppmorendo*

Vle *ppmorendo*

Vlc. *ppmorendo*

Cb. *pp* *pizz.*

Fine

Trio
Poco più mosso

Ob.I.II. *fp* *fp* *fp* 55

Fag.I.II. *fp* *fp* *fp*

Cor.I.II.D *fp* *fp* *fp*

I. Viol. *fp* pizz. *fp* *fp*

II. *p*

Vle *fp* pizz. *fp* *fp*

Vlc. *fp* *fp* *fp*

Cb. *fp* arco *fp* *fp*

Ob.I.II. *f* *f* *p* *dim.* 60

Fag.I.II. *f* *p* *dim.*

Cor.I.II.D *f* *p* *dim.*

I. Viol. *f* *p* *dim.*

II. *f* *p* *dim.*

Vle *f* *p* *dim.*

Vlc. *f* *p* *dim.*

Cb. *f* pizz. *p* *dim.*

Ob. I. II. 65

Fag. I. II.

Cor. I. II. D

I. Viol.

II. Viol.

Vle

Vlc.

Cb.

Ob. I. II.

Fag. I. II.

Cor. I. II. D

I. Viol.

II. Viol.

Vle

Vlc.

Cb.

70

75

Ob.I.II. *fp fz fp fz*

Fag.I.II. *fp fz fz fz*

Cor.I.II. D *fp fz fp fz*

I. Viol. *fp fp*

II. *fz fz fz fz*

Vle *fp fp*

Vlc. *fp fp*

Cb. *fz fz*

80

Ob.I.II. *dim. pp*

Fag.I.II. *dim.*

Cor. I. II. D *dim.*

I. Viol. *f dim. pp arco fp*

II. *f pp fp*

Vle *f dim. p arco*

Vlc. *f dim. pp*

Cb. *f dim. pp*

Ob.I.II.

Fag.I.II.

Cor. I.II.D

I. Viol.

II. Viol.

Vle

Vlc.

Cb.



Ob.I.II.

Fag.I.II.

Cor. I.II.D

I. Viol.

II. Viol.

Vle

Vlc.

Cb.

95

Ob. I. II. *cresc.*

Fag. I. II. *cresc.*

Cor. I. II. D *cresc.*

I. Viol. *cresc.*

II. *cresc.*

Vle *cresc.*

Vlc. *cresc.*

Cb.

==

100

Ob. I. II. *f*

Fag. I. II. *f*

Cor. I. II. D *f*

I. Viol. *mf* *dim.* *p* *dim.*

II. *mf* *dim.* *p* *dim.*

Vle *mf* *dim.* *p* *dim.*

Vlc. *mf* *dim.* *p* *dim.*

Cb.

Ob. I. II. *f* 115 *pp*

Fag. I. II. *f* *p* *dim.* *pp*

Cor. I. II. D *f* *p* *dim.*

I. *f* *p* *dim.* *pp*

Viol. II. *f* *p* *dim.* *pp*

Vle *f* *p* *dim.* *pp*

Vlc. *f* *pizz.* *p* *dim.* *pp*

Cb. *f* *p* *dim.* *pp*

==

Ob. I. II. 120 125 [ppp]

Fag. I. II. *ppp*

Cor. I. II. D *ppp*

I. *ppp* arco

Viol. II. *ppp* arco

Vle *ppp* arco

Vlc. *ppp* arco

Cb. *ppp*

Polka D.C. sin al Fine

III. SOUSEDSKÁ (MINUETTO)

Allegro giusto ♩ = 132 5

Flauti I.II.

Clarineti I.II.B

Fagotti I.II.

I. Violini

II. Violini

Viole

Violoncelli

Contrabassi

10

Fl. I.II.

Cl. I.II.B

Fag. I.II.

I. Viol.

II. Viol.

Vle

Vlc.

Cb.

15

Fl. I. II.

Cl. I. II. B

Fag. I. II.

I. Viol.

II. Viol.

Vle.

Vlc.

Cb.

f

dim.

pp

pp

pp

pp

20

Fl. I. II.

Cl. I. II. B

Fag. I. II.

I. Viol.

II. Viol.

Vle.

Vlc.

Cb.

pp

pp

A 25 *a2*

Fl. I. II. *f fz p pp*

Cl. I. II. B *f fz p pp*

Fag. I. II. *f fz p pp*

I. Viol. *f p pp*

II. Viol. *f p pp*

Vle. *f p pp*

Vlc. *ff fz p pp*

Cb. *ff fz p pp*

2. *35*

Fl. I. II. *pp f p*

Cl. I. II. B *pp f p*

Fag. I. II. *pp f p*

I. Viol. *pp ff fz fz p*

II. Viol. *pp ff fz fz p*

Vle. *pp ff fz fz p*

Vlc. *pp ff p*

Cb. *pp ff p*

40

Fl. I. II. *pp*

Cl. I. II. B

Fag. I. II.

I. Viol. *pp*

II. Viol. *pp*

Vle. *pp*

Vlc. *pp*

Cb. *pp*

1. 2.

Fl. I. II.

Cl. I. II. B

Fag. I. II.

I. Viol.

II. Viol.

Vle.

Vlc. *pp*

Cb. *pp*

45

pp

p

p

sempre pp

sempre più p [sim.]

sempre più p [sim.]

sempre più p

sempre più p

50

Fl.I.II. *pp*

Cl.I.II.B *pp*

Fag.I.II. *pp*

I. Viol. *pp*

II. *pp*

Vle *pp*

Vlc. *pp*

Cb. *pp* [sim.]

55

Fl.I.II.

Cl.I.II.B

Fag.I.II.

I. Viol.

II.

Vle

Vlc.

Cb.

60

Fl. I. II.

Cl. I. II. B

Fag. I. II.

I. Viol.

II. Viol.

Vlc.

Vlo.

Cb.



B Poco meno mosso

65

Fl. I. II.

Cl. I. II. B

Fag. I. II.

I. Viol.

II. Viol.

Vlc.

Vlo.

Cb.

Fl.I.II. ritard. 70 Tempo I. a2 75

Cl.I.II.B

Fag.I.II.

I. Viol. ritard. dim. p ff

II. Viol. dim. p ff pizz.

Vle. dim. p ff pizz.

Vlc. dim. p ff pizz.

Cb. dim. p ff

Fl.I.II. a2 80

Cl.I.II.B dim.

Fag.I.II. dim.

I. Viol. dim. pizz. p arco

II. Viol. dim. arco p

Vle. dim. p arco

Vlc. dim. p arco

Cb. dim. p

85

Fl. I. II. *pp*

Cl. I. II. B *pp*

Fag. I. II. *pp*

I. Viol. *pp*

II. Viol. *pizz.*

Vle. *pp*

Vlo. *pp*

Cb. *pp*

90

Fl. I. II. *f* *a2*

Cl. I. II. B *f* *a2*

Fag. I. II. *f*

I. Viol. *f* *arco*

II. Viol. *f*

Vle. *f*

Vlo. *f*

Cb. *f* *arco*

fz *p*

C 95 a2

Fl. I. II.

Cl. I. II. B

Fag. III.

I. Viol.

II. Viol.

Vle.

Vlo.

Cb.

100 a2 105

Fl. I. II.

Cl. I. II. B

Fag. I. II.

I. Viol.

II. Viol.

Vle.

Vlo.

Cb.

110

Fl. I. II. *pp*

Cl. I. II. B *pp*

Fag. I. II. *pp*

I. Viol. *pp*

II. Viol. *pp*

Vle. *pp*

Vlc. *pp* arco

Cb. *pp*

Poco meno mosso

115

Fl. I. II.

Cl. I. II. B

Fag. I. II. *a2* *cresc..*

I. Viol. *cresc..*

II. Viol. *[pp]* *cresc..*

Vle. *cresc..*

Vlc. *cresc..*

Cb. *cresc..*

string. *[mf]* *molto rit.* *f*

120

Fl. I. II. *f* *dim.* *p* *pp*

Cl. I. II. B *dim.* *p*

Fag. I. II. *dim.* *p* *pp*

I. Viol. *dim.* *p* *pp*

II. *dim.* *p*

Vle *dim.* *p*

Vlc. *dim.* *p*

Cb. *dim.* *p*

125 180 in tempo

Fl. I. II. *p* *pp* *f* *pp*

Cl. I. II. B *p* *pp* *f* *pp*

Fag. I. II. *pp* *pp* *f* *pp*

I. Viol. *pp* *f* *pp*

II. *pp* *f* *pp*

Vle *pp* *f* *pp*

Vlc. *pp* *f* *pp*

Cb. *pp* *f* *pp*

IV. ROMANCE

ROMANZA

Andante con moto $\text{♩} = 52$

p

Flauti I. II.

Oboi I. II.

Corno inglese *)

Fagotti I. II.

Corni I. II. F

Andante con moto $\text{♩} = 52$

tenuto

sempre pp tenuto

sempre pp tenuto

sempre pp

I. Violini

II. Violini

Viola

I. Violoncelli

II. Violoncelli

Contrabassi

pp

pp

Fl. I. II.

Ob. I. II.

Cor. ingl.

Fag. I. II.

Cor. I. II. F

segue

segue

segue

p tenuto

sempre pp

I. Viol.

II. Viol.

Vle

I. Vlc.

II. Vlc.

Cb.

7 7 5

p

*) Není-li anglický roh, budiž vzat roh basetový.
Ad lib. Corno di bassetto.

Fl. I. II. *p* *[p]* 10

Ob. I. II.

Cor. ingl.

Fag. I. II. *pp*

Cor. I. II. F

I. Viol. *pp*

II. *pp*

Vle. *pp*

I. Vlc. *pp*

II. *pp* *segue*

Cb. *pp*

Detailed description: This system contains the first four measures of the score. The Flute I and II parts have a melodic line starting with a half note, followed by eighth notes, and a dynamic marking of *p*. A bracket above the Flute I part indicates a *[p]* dynamic for measures 3 and 4, with a '10' above the staff. The Oboe I and II parts are silent. The English Horn part has a melodic line with a dynamic of *p*. The Bassoon I and II parts play a sustained chord with a dynamic of *pp*. The French Horn I and II parts play a sustained chord with a dynamic of *pp*. The Violin I and II parts play a rhythmic pattern of eighth notes with a dynamic of *pp*. The Viola part plays a rhythmic pattern of eighth notes with a dynamic of *pp*. The Violoncello I and II parts play a rhythmic pattern of eighth notes with a dynamic of *pp*; the first measure includes the word *segue*. The Contrabass part plays a sustained chord with a dynamic of *pp*.

Fl. I. II. *p*

Ob. I. II. *p*

Cor. ingl. *p*

Fag. I. II. *pp*

Cor. I. II. F *pp*

I. Viol. *pp*

II. *pp*

Vle. *pp*

I. Vlc. *pp* *tenuto*

II. *pp*

Cb. *pp*

Detailed description: This system contains measures 5 through 8. The Flute I and II parts have a melodic line with a dynamic of *p*. The Oboe I and II parts have a melodic line with a dynamic of *p*. The English Horn part has a melodic line with a dynamic of *p*. The Bassoon I and II parts play a sustained chord with a dynamic of *pp*. The French Horn I and II parts play a sustained chord with a dynamic of *pp*. The Violin I and II parts play a rhythmic pattern of eighth notes with a dynamic of *pp*. The Viola part plays a rhythmic pattern of eighth notes with a dynamic of *pp*. The Violoncello I and II parts play a rhythmic pattern of eighth notes with a dynamic of *pp*; the first measure includes the word *tenuto*. The Contrabass part plays a sustained chord with a dynamic of *pp*.

Fl. I. II. *p*

Ob. I. II.

Cor. ingl. *p*

Fag. I. II. *p* [segue]

Cor. I. II. F *p* [segue]

I. Viol. *mf*

II. *mf*

Vle *mf*

I. Vlc. *mf* pizz. *p*

II. *mf* pizz. *p*

Cb. *mf* *p*

25

Fl. I. II. *p* *pp*

Ob. I. II. *[p]* *p* *pp*

Cor. ingl. *p*

Fag. I. II. *p* *pp*

Cor. I. II. F *p* *pp*

I. Viol. *pp*

II. *pp*

Vle arco *pp*

Vlc. *p* *pp*

Cb. *p*

30

B

40 a 2

Fl.I.II. *f* *p* *pp*

Ob.I.II. *f* *p* *pp*

Cor.ingl. *f* *p*

Fag.I.II. *f* *p*

Cor.I.II.F *f* *p*

I. Viol. *f* *p*

II. *f* *p*

Vle *f* *p* *pp*

Vlc. *f* *p* *pp*

Cb. *f* *p* pizz. *pp*

a 2 45

Fl.I.II. *f*

Ob.I.II. *f*

Cor.ingl. *f*

Fag.I.II. *pp* *f*

Cor.I.II.F *f*

I. Viol. *f*

II. *f*

Vle *f*

Vlc. *f*

Cb. *f*

55

molto tranquillo

C

Fl.I.II.
Ob.I.II.
Cor.ingl.
Fag.I.II.

Musical score for woodwinds (Flute, Oboe, English Horn, Bassoon) from measure 55 to 59. The Flute part features a melodic line with slurs and accents. The Oboe part has a rhythmic accompaniment. The English Horn and Bassoon parts provide harmonic support with sustained notes and occasional melodic fragments.

Cor.I.II.F

Musical score for French Horns (I and II) from measure 55 to 59. The horns play a rhythmic pattern of eighth notes, providing a steady accompaniment for the woodwinds.

molto tranquillo

I.
Viol.
II.
Vle
Vlc.
Cb.

Musical score for strings (Violins, Viola, Violoncello, Contrabass) from measure 55 to 59. The strings play a sustained harmonic accompaniment. The Violoncello part includes a 'pizz.' (pizzicato) marking in measure 55 and an 'arco' (arco) marking in measure 56.



60

Fl.I.II.
Ob.I.II.
Cor.ingl.
Fag.I.II.
Cor.I.II.F

Musical score for woodwinds (Flute, Oboe, English Horn, Bassoon, French Horn) from measure 60 to 64. The Flute part continues with a melodic line. The Oboe part has a rhythmic accompaniment. The English Horn, Bassoon, and French Horn parts provide harmonic support.

I.
Viol.
II.
Vle
Vlc.
Cb.

Musical score for strings (Violins, Viola, Violoncello, Contrabass) from measure 60 to 64. The strings play a sustained harmonic accompaniment, with all parts marked 'ppp' (pianissimo).

65

Fl.I.II. *pp*

Ob.I.II. *pp*

Cor. ingl. *p*

Fag. I.II. *p*

Cor. I. II.F *pp*

I. Viol.

II. Viol.

Vle

Vlc.

Cb.

70

Fl.I.II. *fz*, *f*, *p*, *pp*

Ob.I.II. *fz*, *f*, *p*, *pp*

Cor. ingl. *sf*, *f*, *p*

Fag. I.II. *fz*, *f*, *p*, *pp*

Cor. I. II.F *fz*, *f*, *p*, *pp*

I. Viol. *pizz.*, *f*, *p*, *arco*, *pp*

II. Viol. *f*, *p*, *pp*, *arco*

Vle *pizz.*, *f*, *p*, *pp*, *arco*

Vlc. *pizz.*, *f*, *p*, *pp*, *arco*

Cb. *f*, *p*, *pp*, *arco*

V. FINALE
(FURIANT)

Presto $\text{♩} = 80$

5

Flauti I. II. *mf*

Oboi I. II.

Clarineti I. II. B

Fagotti I. II. *p*

Corni I. II. F *p*

Trombe I. II. D

Timpani D, A

Presto $\text{♩} = 80$

I. Violini

II. Violini

Viole *p*

Violoncelli *p*

Contrabassi *p*

10

Ob. I. II.

Fag. I. II. *cresc.*

Cor. I. II. F *p* *cresc.*

I. Viol. *p* *cresc.*

II. Viol. *p* *cresc.*

Vle *cresc.*

Vlc. *cresc.*

Cb. *p* *cresc.*

45 *A* *a2* 50

Fl. I. II. *pp*

Ob. I. II. *pp*

Fag. I. II. *pp*

Cor. I. II. F *pp*

I. Viol. *p*

II. *p*

Vle *p*

Vlc. *pp*

Cb. *pp*

a2 55

Fl. I. II. *[p]*

Ob. I. II. *[p]*

Fag. I. II. *[p]*

Cor. III. F *[p]*

I. Viol. *dolce*

II. *pp*

Vle *dolce*

Vlc. *cresc.*

Cb. *pp* *cresc.*

60

Fl. I. II.

Ob. I. II.

Cl. I. II. B

Fag. I. II.

Cor. I. II. F

I. Viol.

II.

Vle

Vlc.

Cb.

65

Fl. I. II.

Ob. I. II.

Cl. I. II. B

Fag. I. II.

Cor. I. II. F

I. Viol.

II.

Vle

Vlc.

Cb.

70 75

Fl. I. II. *p*

Ob. I. II. *p* *a2*

Cl. I. II. B *p*

Fag. I. II. *p* *cresc.*

Cor. I. II. F *a2* *p*

Trbe I. II. D *p*

Timp. D, A *p* *poco a poco cresc.*

I. Viol. *p non legato* *cresc.*

II. Viol. *p non legato* *cresc.*

Vle *p*

Vlc. *p*

Cb. *p* *ff*

80

Fl. I. II. *a2*

Ob. I. II. *ff a2*

Cl. I. II. B *ff a2*

Fag. I. II. *cresc.*

Cor. I. II. F *a2* *ff*

Trbe I. II. D *cresc.*

Timp. D, A *cresc.*

I. Viol. *cresc.*

II. Viol. *cresc.*

Vle *cresc.*

Vlc. *cresc.*

Cb. *cresc.*

B

85 90

Fl. I. II. *a2*

Ob. I. II. *ff fz*

Cl. I. II. B *ffa2 fz*

Fag. I. II. *ff fz*

Cor. I. II. F *a2*

Trbe I. II. D *ffa2 ff*

Timp. D, A *ff*

I. Viol. *ff fz*

II. *ff fz*

Vle *ff*

Vlc. *ff*

Cb. *ff*

95

Fl. I. II. *a2*

Ob. I. II. *fz*

Cl. I. II. B *a2 fz*

Fag. I. II. *fz*

Cor. I. II. F *a2*

Trbe I. II. D *a2*

Timp. D, A

I. Viol. *fz*

II. *fz*

Vle *fz*

Vlc. *fz*

Cb. *fz*

Fl. I. II. *a2* *ff* 115 120

Ob. I. II.

Cl. I. II. B *ff*

Fag. I. II. *ff*

Cor. I. II. F *ff* *a2*

Trbe I. II. D *a2* *[ff]*

Timp. D, A

I. Viol. *ff*

II. *ff*

Vle *ff*

Vlc. *ff*

Cb. *ff*

==

Fl. I. II. *C* 125

Ob. I. II.

Fag. I. II. *f* *sforzando*

I. Viol. *ff*

II. *ff*

Vle

Vlc. *f* *sforzando*

Cb. *f* *sforzando*

130 135

Ob.I.II.

Cl.I.II.B

Fag.I.II.

Cor.I.II.F

Trbe I.II.D

Timp.D, A

I. Viol.

II. Viol.

Vle

Vlc.

Cb.

140

Ob.I.II.

Cl.I.II.B

Fag.I.II.

Cor.I.II.F

I. Viol.

II. Viol.

Vle

Vlc.

Cb.

Fl.I.II. 145 150 a 2

Ob.I.II. a 2

Cl.I.II.B a 2

Fag.I.II. a 2

Cor.I.II.F a 2

I. Viol. ff

II. ff

Vle ff

Vlc. ff

Cb. ff

Fl.I.II. 155 [muta in A]

Ob.I.II. f

Cl.I.II.B a 2 f

Fag.I.II. a 2 f

Cor.I.II.F a 2

Trbe I.II.D f a 2

Timp.D, A f

I. Viol. ff

II. ff

Vle ff

Vlc. ff

Cb. ff

160 D 165

I. Viol. *fp*

II. *pp*

Vle. *pp*

Vlc. *pp*

Cb. *pp*

170 175

Ob.II. *p*

Fag.I.II. *p*

Cor.I.II.F *p*

I. Viol. *p*

II. *p*

Vle. *pizz.*

Vlc. *p*

Cb. *p*

180

Ob.II. *f*

Fag.I.II. *f*

Cor.I.II.F *f*

I. Viol. *f* *fp*

II. *f* *fp*

Vle. *fp*

Vlc. *f* *arco* *fp*

Cb. *f* *fp*

I. Viol. *p* *[fp] cresc.* *f*

II. Viol. *p* *[fp] cresc.* *f*

Vle. *p* *[fp] cresc.* *f*

Vlc. *p* *[fp] cresc.* *f*

Cb. *p* *Cresc.* *f*

185 190



E

Fl. I. II. *p* *f*

Ob. I. II. *p* *f*

Cl. I. II. A *p* *f*

Fag. I. II. *p* *f*

Cor. I. II. F *p* *f*

Trbe I. II. D *a2* *f*

Timp. D, A

195

I. Viol. *f*

II. Viol. *f*

Vle. *f*

Vlc. *f*

Cb. *f*

200 205

Fl. I. II. a2

Ob. I. II. a2

Cl. I. II. A a2

Fag. I. II. a2

Cor. I. II. F a2

Trbe I. II. D a2

Timp. D, A

I. Viol. ff

II. ff

Vle ff

Vlc. ff

Cb. ff

210 215

grandioso

Fl. I. II. a2

Ob. I. II. a2

Cl. I. II. A a2

Fag. I. II. a2

Cor. I. II. F a2

Trbe I. II. D a2

Timp. D, A

muta in D

I. Viol. ff

II. ff

Vle ff

Vlc. ff

Cb. ff

220 225

Timp. D, A

I. Viol.

II. Viol.

Vle

Vlc.

Cb.

ff *fz* *fz* *fz* *f*

F *p* 230

Ob. I. II.

I. Viol.

II. Viol.

Vle

Vlc.

Cb.

p

235 240 *poco a poco ritard. e dim.*

Ob. I. II.

Cl. I. II. A

Fag. I. II.

Cor. I. II. D

p *dim.* *pp*

p *dim.* *pp*

pp

poco a poco ritard. e dim.

I. Viol.

II. Viol.

Vle

Vlc.

Cb.

div. *p* *dim.* *pp*

p *dim.* *pp*

p *dim.* *pp*

245 *Tempo I.* 250

Ob.I.II. *mf*

Cl.I.II.A muta in B

Fag.I.II. *p*

Cor.I.II.D muta in F *p*

Tempo I.

I. Viol.

II. Viol.

Vle. *p*

Vlc. *p*

Cb. *p*

255

Ob.I.II.

Cl.I.II.B

Fag.I.II. *p*

Cor.I.II.F *p*

I. Viol. *p*

II. Viol. *p*

Vle. *p*

Vlc. *p*

Cb. *p*

G 275

Ob. I. II.

Cl. I. II. B

Fag. I. II.

Cor. I. II. F

I. Viol.

II. Viol.

Vle

Vlc.

Cb.

280 285 dim.

Ob. I. II.

Cl. I. II. B

Fag. I. II.

Cor. I. II. F

I. Viol.

II. Viol.

Vle

Vlc.

Cb.

Ob.I.II. *[pp]* 290

Cl.I.II.B

Fag.I.II.

Cor.I.II.D a2 *ff*

I. Viol. *ff*

II.

Vle

Vlc. *ff*

Cb. *ff*

Ob.I.II. 295 a2 *ff* 300

Cl.I.II.B a2 *ff*

Fag.I.II. *ff*

Cor.I.II.D a2 *ff* *f*

I. Viol. *f* *dim.* *pp*

II. *f* *p* *pp*

Vle

Vlc. *fz* *ff*

Cb. *fz* *ff*

Ob.I.II. *a2* 305

Cl.I.II.B

Fag.I.II.

Cor.I.II.D *a2*

I. Viol.

II. *dim.*

Vle

Vlc.

Cb.

H 310

Ob.I.II. *a2*

Cl.I.II.B

Fag.I.II.

Cor.I.II.D

Trbe I.II.D

Timp. D, A

I. Viol.

II.

Vle

Vlc.

Cb.

315

320

Ob.I.II.

Cl.I.II.B

Fag.I.II.

Cor.I.II.D

Trbe I.II.D

I. Viol.

II. *dim.* *p* *f*

Vle *ff*

Vlc. *ff*

Cb. *ff*

325

380

Ob.I.II.

Cl.I.II.B

Fag.I.II.

Cor.I.II.D

Trbe I.II.D

I. Viol.

II.

Vle

Vlc.

Cb.

385

Ob. I. II.

Cl. I. II. B

Fag. I. II.

Cor. I. II. D

Trbe I. II. D

Timp. D, A

I. Viol.

II. Viol.

Vle

Vlc.

Cb.

340

345

Fl. I. II.

Ob. I. II.

Cl. I. II. B

Fag. I. II.

Cor. I. II. D

Trbe I. II. D

Timp. D, A

I. Viol.

II. Viol.

Vle

Vlc.

Cb.

850

Fl. I. II.

Ob. I. II.

Cl. I. II. B

Fag. I. II.

Cor. I. II. D

Trbe I. II. D

Timp. D, A

I. Viol.

II. Viol.

Vle

Vlc.

Cb.

ff

855

360

Fl. I. II.

Ob. I. II.

Cl. I. II. B

Fag. I. II.

Cor. I. II. D

Trbe I. II. D

Timp. D, A

I. Viol.

II. Viol.

Vle

Vlc.

Cb.

ff

Fl. I. II. *a2* *865*

Ob. I. II. *a2*

Cl. I. II. B *ff*

Fag. I. II. *a2* *ff*

Cor. I. II. D *a2*

Trbe I. II. D *a2*

Timp. D, A

I. Viol. *ff*

II. *ff*

Vle *ff*

Vlc. *ff*

Cb. *ff*

|| *Poco più mosso* *870* *875* **||**

Fl. I. II. *a2* *ff*

Ob. I. II. *ff*

Cl. I. II. B *ff*

Fag. I. II. *ff*

Cor. I. II. D *a2* *ff*

Trbe I. II. D *a2* *ff*

Timp. D, A *ff*

Poco più mosso

I. Viol. *ff*

II. *ff*

Vle *ff*

Vlc. *ff*

Cb. *ff*

molto ritard.

880

K

885

Fl. I. II.

Ob. I. II.

Cl. I. II. B

Fag. I. II.

Cor. I. II. D

Trbe I. II. D

Timp. D, A

I. Viol.

II. Viol.

Vle

Vlc.

Cb.



in tempo

890

Fl. I. II.

Ob. I. II.

Cl. I. II. B

Fag. I. II.

Cor. I. II. D

Trbe I. II. D

Timp. D, A

I. Viol.

II. Viol.

Vle

Vlc.

Cb.

895
a2

400

Fl. I. II.
Ob. I. II.
Cl. I. II. B
Fag. I. II.
Cor. I. II. D
Trbe I. II. D
Timp. D, A
I. Viol.
II.
Vle
Vlc.
Cb.

[sim.]

405
a2

410

Fl. I. II.
Ob. I. II.
Cl. I. II. B
Fag. I. II.
Cor. I. II. D
Trbe I. II. D
Timp. D, A
I. Viol.
II.
Vle
Vlc.
Cb.

EDITORS' NOTES

SOURCES:

a) The composer's manuscript of the score which comprises, in addition to the title page, 43 pages of oblong music paper, 255:330 mm, and is preserved in the Music Archives of the National Library in Prague (sign. 59-R-115).

b) The original edition published by Schlesinger Comp., Berlin (1881, S 7377).

Our edition is based on Schlesinger's edition published during the composer's lifetime and almost certainly under his supervision. It has been carefully collated with the autograph. The more important deviations are listed in the Editors' Notes ("Annotazioni"). Obvious misprints and omissions in Schlesinger's edition have been rectified.

Further, dynamic marks or others relating to the interpretation have been added on the basis of analogous passages. The more important emendments or addenda are placed in square brackets [].

ABBREVIATIONS:

A = autograph score

Schl = Schlesinger's edition

SN = the present edition of the State Publishing House
KLHU

[!] = slip in the manuscript or misprint

Large Arabic numerals indicate the bar; the small numbers beside them indicate the note (or chord) in the bar; rests are not counted.

VYDAVATELSKÉ POZNÁMKY

ANNOTAZIONI

POLKA

56 Viol II A, Schl:



SN:



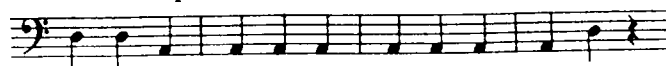
Vide 51-64, Vide 112

ROMANZA

60-65 Fag. II., Cb A: senza ligat.; SN = Schl

FURIANT

218-221 Timp. Schl:



[!]; SN = A

278₁-9₁ Vle A: f_1-a_1 ; Schl, SN: d^1-f^1 . Vide 32-33

339-340 Vle A: col Cl. I. II.; SN = Schl

341-2 Viol. II. A: col Ob. I. II.; SN = Schl

343-4 Viol. I. A: col Fl. I.; SN = Schl