

Antonio Salieri (1750 - 1825)

SINFONIA in RE

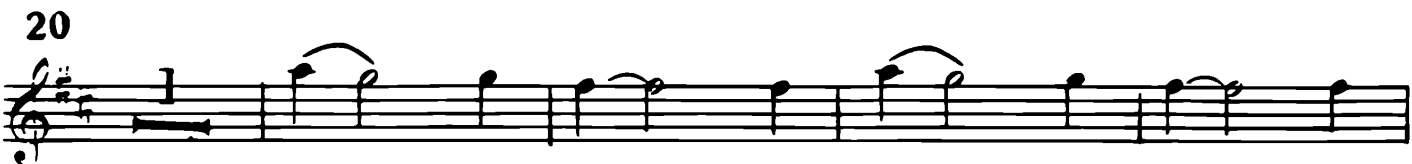
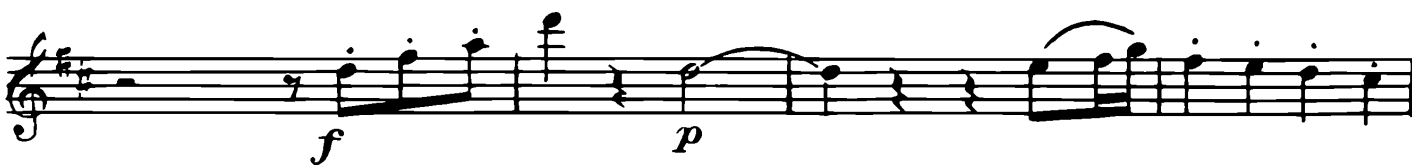
"Giorno onomastico,"
per orchestra da camera

Revisione di RENZO SABATINI

FLAUTO II.

5

Allegro, quasi Presto



35 3

40

45 50

55 60 65

70

75

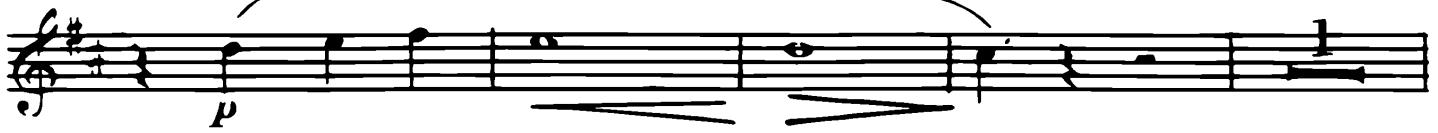
80

85 *poco sost.*  *a tempo* 90 95

100 *I. Obsolo* 105

110

115



120



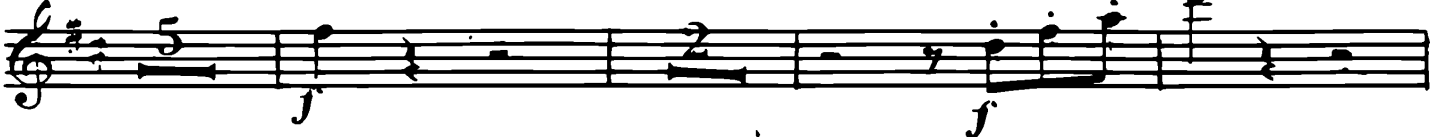
125

130



135

140



145



150



155

160



165



170

175



180 *truu* 185 *p*

truu 190 *ff*

195

LARGHETTO - TACE

MINUETTO
Non tanto allegro 310

p

315

320

f

325 330

f

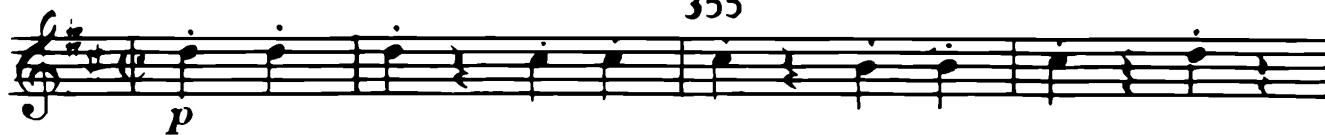
335 *Fine*

TRIO 340 345 350 I. 1 II.

6

Allegretto e sempre l'istesso tempo

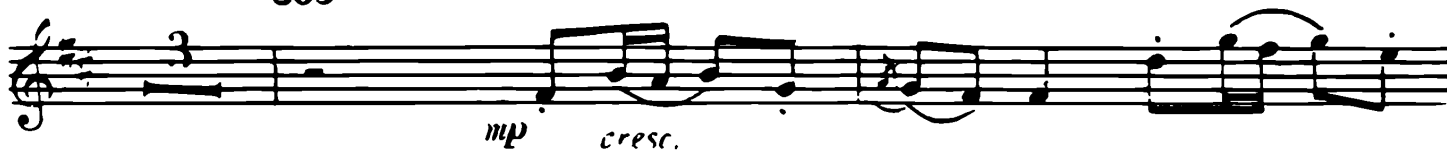
355



360



365



370



375



380



385



390

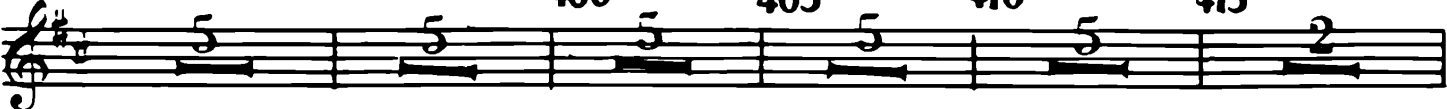
395

400

405

410

415



Sempre lo stesso movimento

510



515



520



525



530



535



540



545



550



555



560



565



570

ff