

SYMPHONY No.2

Edited by RICHARD PLATT

THOMAS AUGUSTINE ARNE
(1710-1778)

1. Presto

The musical score for Violin 2, first movement of Symphony No. 2 by Thomas Augustine Arne, is presented in nine staves. The key signature is G minor (one flat) and the time signature is 3/4. The tempo is marked '1. Presto'. The score begins with a forte (*f*) dynamic. The first staff contains measures 1-5. The second staff (measures 6-9) starts with a piano (*p*) dynamic, followed by a forte (*f*) dynamic. The third staff (measures 10-13) starts with a piano (*p*) dynamic, followed by a forte (*f*) dynamic. The fourth staff (measures 14-17) starts with a piano (*p*) dynamic, followed by a forte (*f*) dynamic. The fifth staff (measures 18-21) starts with a piano (*p*) dynamic. The sixth staff (measures 22-25) starts with a forte (*f*) dynamic, followed by a piano (*p*) dynamic. The seventh staff (measures 26-29) starts with a forte (*f*) dynamic, followed by a piano (*p*) dynamic. The eighth staff (measures 30-33) starts with a forte (*f*) dynamic. The ninth staff (measures 34-36) starts with a forte (*f*) dynamic and concludes with a triplet of eighth notes.

VIOLIN 2

40

45

49

53

57

61

65

69

73

77

81

VIOLIN 2

85

p

89

f *p*

93

f *rinf.* *rinf.*

97

rinf. *p* *rinf.* *p* *rinf.* *p*

101

rinf. *p* *f*

105

p

109

f

113

f

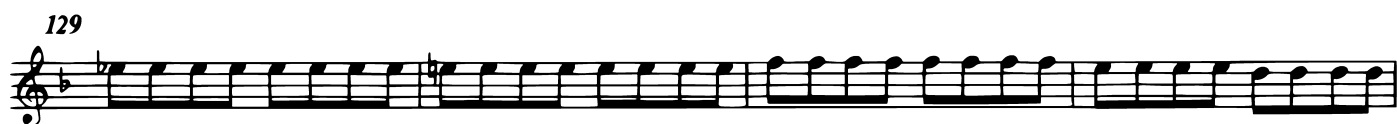
117

f

121

f

VIOLIN 2

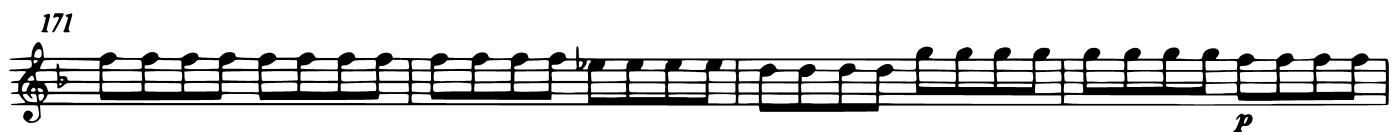


VIOLIN 2

166



171



175




179



183



187



191



195



199



203



VIOLIN 2

2. Andantino

f *dim.*

4 *pp* *f*

7

10 *f*

13 *p solo* *rinf.* *p* *rinf.* *p* *tutti*

16 *f* *p* *f* *p*

19 *f*

23 *p* *f*

VIOLIN 2

27 *p*

31 *p solo rinf. p rinf. p*

34 *f tutti dim. p*

38 *pp f*

41 *p pp* **Adagio**

3. Moderato allegro

f

5 *p*

10 *f*

15

20 *p*

VIOLIN 2

Musical score for Violin 2, measures 25-81. The score is written in treble clef with a key signature of one flat (B-flat). It features various dynamics including *f*, *p*, and *ff*, and includes articulation marks such as accents and slurs. Measure 25 starts with a repeat sign and a forte (*f*) dynamic. Measures 30-31 show a piano (*p*) dynamic. Measures 35-36 return to forte (*f*). Measures 41-42 show piano (*p*). Measures 47-48 return to forte (*f*). Measures 52-53 are marked with a forte (*f*) dynamic. Measures 57-58 feature triplets. Measures 62-63 are marked with a piano (*p*) dynamic. Measures 68-69 show piano (*p*). Measures 72-73 are marked with a forte (*f*) dynamic. Measures 75-76 are marked with a piano (*p*) dynamic. Measures 78-79 are marked with a fortissimo (*ff*) dynamic. Measures 81-82 conclude the section with a final cadence.