

Idillio-Concertino

Ermanno Wolf-Ferrari

Op. 15

I. Preambolo

Andante con moto

Staff 1: *f* pizz. *p* **2**

Staff 2 (Measures 7-12): arco *mf* *pp* rit. a tempo

Staff 3 (Measures 13-17): **1** pizz. *p* *p* arco

Staff 4 (Measures 18-22): *sf* *p*

Staff 5 (Measures 23-28): **2** pizz. *f* **2**

Staff 6 (Measures 29-33): arco *sf espress.* scherzando *pp*

Staff 7 (Measures 34-38): *espress.* *espress.* *f* *sf*

Staff 8 (Measures 39-43): *f*

44 *pizz.* *p* *arco* *rit.*

49 **3** a tempo

54 *sf* *p*

59 *p* *espress.* *espress.*

65 **4** *f* *sf* *f* *sf* *sf* *ff*

70 *pizz.* *arco*

75 *rit.* **5** a tempo *p*

81 *dim.* *rit.* *smorzando*

86 *ff* *Adagio* *Tempo I.* *p*

II. Scherzo

Presto

12

a tempo **6**

11 **12**

a tempo pizz.

p

38

44

7 arco

f *p*

50

57

div. metà

p

64

tutti

poco sf *p* *f*

8

71

78

div. metà

p

86 9

tutti

sf *p* *f*

Detailed description: Musical staff for measures 86-91. It begins with a rest, followed by a series of eighth notes with slurs. Dynamic markings include *sf*, *p*, and *f*. The staff ends with a quarter note.

92

sf *cresc.*

Detailed description: Musical staff for measures 92-98. It features a continuous line of eighth notes with slurs. Dynamic markings include *sf* and *cresc.* The staff ends with a quarter note.

99

ff *p* *pp*

Detailed description: Musical staff for measures 99-105. It features a series of eighth notes with slurs. Dynamic markings include *ff*, *p*, and *pp*. The staff ends with a quarter note.

106

rit.

Detailed description: Musical staff for measures 106-111. It features a series of eighth notes with slurs. A *rit.* marking is present. The staff ends with a quarter note.

10 a tempo

112 *pizz.* *arco*

mf

Detailed description: Musical staff for measures 112-117. It begins with a *pizz.* marking and *mf* dynamic, followed by a rest. Then it transitions to *arco* with eighth notes and slurs. The staff ends with a quarter note.

118

div. *metà* *p*

Detailed description: Musical staff for measures 118-124. It features a series of eighth notes with slurs. Dynamic markings include *div.*, *metà*, and *p*. The staff ends with a quarter note.

125

tutti *rit.* *f*

Detailed description: Musical staff for measures 125-131. It features a series of eighth notes with slurs. Dynamic markings include *tutti*, *rit.*, and *f*. The staff ends with a quarter note.

132 a tempo

p

Detailed description: Musical staff for measures 132-138. It features a series of eighth notes with slurs. Dynamic marking is *p*. The staff ends with a quarter note.

139

dim. 11 10

Detailed description: Musical staff for measures 139-153. It features a series of eighth notes with slurs. Dynamic marking is *dim.*. A section marked '11' is followed by a section marked '10' with a thick black bar. The staff ends with a quarter note.

154

f

Detailed description: Musical staff for measures 154-159. It features a series of eighth notes with slurs. Dynamic marking is *f*. The staff ends with a quarter note.

159 **5** a tempo **12**
pp *leggero*

169 *accel.*

175 **13** **7** a tempo *riten.* a tempo
f *sf* *p*

189 *riten.* a tempo
f *p* *pp*

III. Adagio

Adagio

sord. *pp* *div.* *unis.*

6 *sostenuto* a tempo
ppp *cresc.* *mf* *pp* *pp*

10 **14**
p *dolciss.*

14
pp *mf* *pp*

19 *poco rit.* **Più tranquillo ancora** **5**
p *mf* *p* *pp* *smorz.*

28

mf espress. *p* *fp* *smorz.* *ppp*

32

15

f marcato *sf*

36

Sostenuto

p *dim.* *pp*

40

tornando al - - - - -

smorz. *sf*

44

Tempo I. animando riten.

f *più f* *p* *p*

48

a tempo Poco più mosso rit.

p *dim.* *pp* *cresc.* *f* *mf* *dim.*

53

Sostenuto A tempo (I.)

16

pp *cresc.* *ff*

58

riten. Adagio molto
lunga molto

sf *dim.* *sf* *p dolciss. dim.*

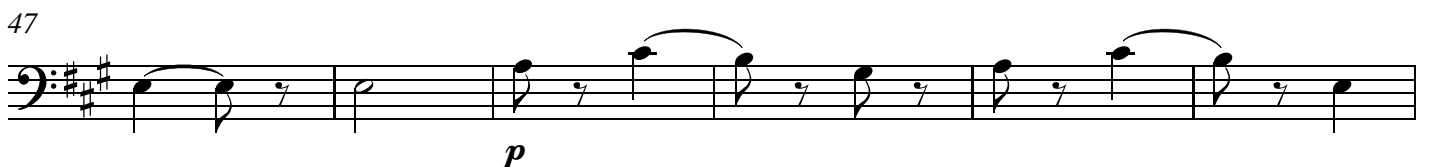
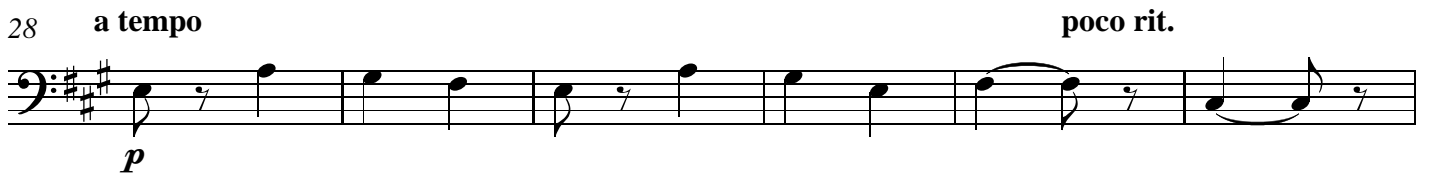
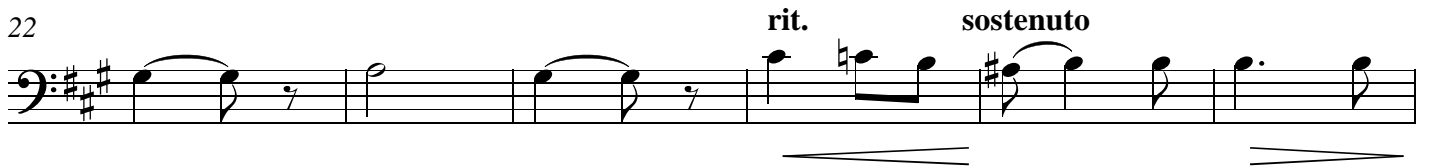
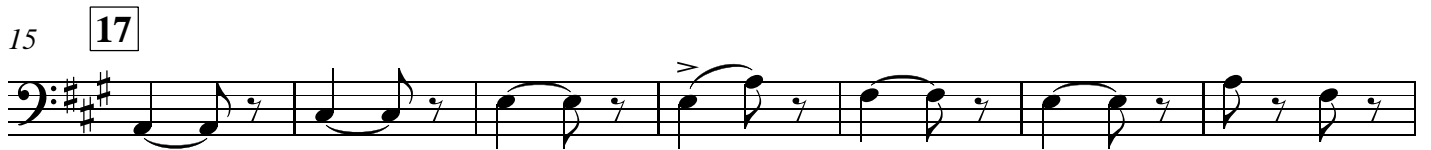
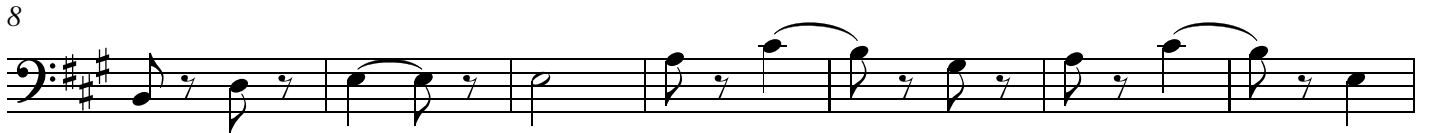
64

pizz. arco Via sord.

dim. *pp* *smorz.*

IV. Rondò

Allegro non troppo
senza sord.



53 *dim.*

60 **19** *rit.* *a tempo*
dim. *f*

66 *p*

72 *dim.* *pp* *pizz.* *p poco marcato*

78 *arco* *sf*

84 *p* *dim.*

90 **20** *pp* *f* *p*

96

102 *sf* *p* *f* *p*

108 21

f *ff* *p*

114

dim.

119 rit.

f *rit.*

124 **A tempo**

mf *p*

131

f *p*

138

pp *mf*

144 22

p

151

p *smorz.* *p leggero*

158

mf *p*

164

ff pesante *pp leggero* *mf*

170

f marcato *cresc.*

176

23

ff

182

p

188

24

pp *pp*

194

smorz.

201

25 Poco più mosso (*in uno*)

div. uniti

ppp

209

rit. Andante (*in due*)

pizz.

pp

215

rit. Allegro (Tempo I.)

arco

pp stacc. *cresc. poco a poco*

221 *accel.*

225 *sf* *A tempo* **26** *ff*

232 *sf*

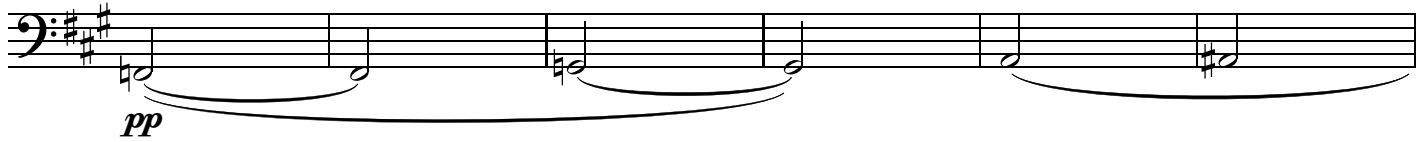
238 *p*

244 **27**

250 *rit.* *sostenuto*

256 *a tempo* *poco riten.* *a tempo*

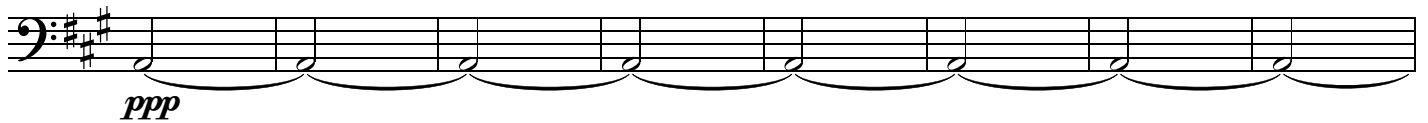
262 **28** *mf* *p* *più p* **VUOTA**

268 **Poco più mosso** (*in uno*)

274



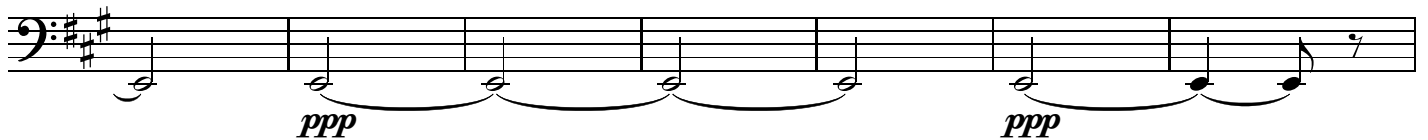
280



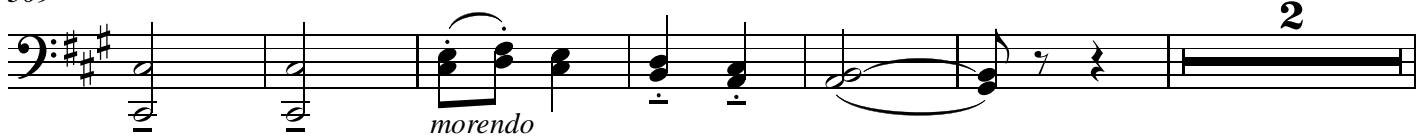
288

riten.**29** **Tempo I.** (*in due*) **Allegro**

295

302 **30** *div.*

309



317

