

pag. 1 Instrumental

pag. 2 vocal

pag. 3 Widmung

pag. 4 Texte

pag. 5 - Noten

Klavierauszug

Waldbühn

Dieser Klavierauszug gehört zu der Partitur der Chöre von Webern. Wenn die Lichtpause der Partitur beendet sein wird,

2 Lieder für gem. Chor & Solo-Sopran
Celesta, Gitarre, Geige, Klarinette u. Bassklarinette

1007
Anton Webern
op. 19

wird der Klavierauszug so zu Lichtpausen sein, dann

Anton Webern

Zwei Lieder aus

„Chinesisch-Deutsche Jahres- und Tageszeiten“

er mit den Singstimmen

von Goethe

der Partitur zusammengeführt,

für gemischten Chor

einen Klavierauszug mit

Celesta, Gitarre, Geige, Klarinette und Bassklarinette

Text ergibt.

Diese ganze Arbeit

op. 19

ist ziemlich fertig!

Partitur

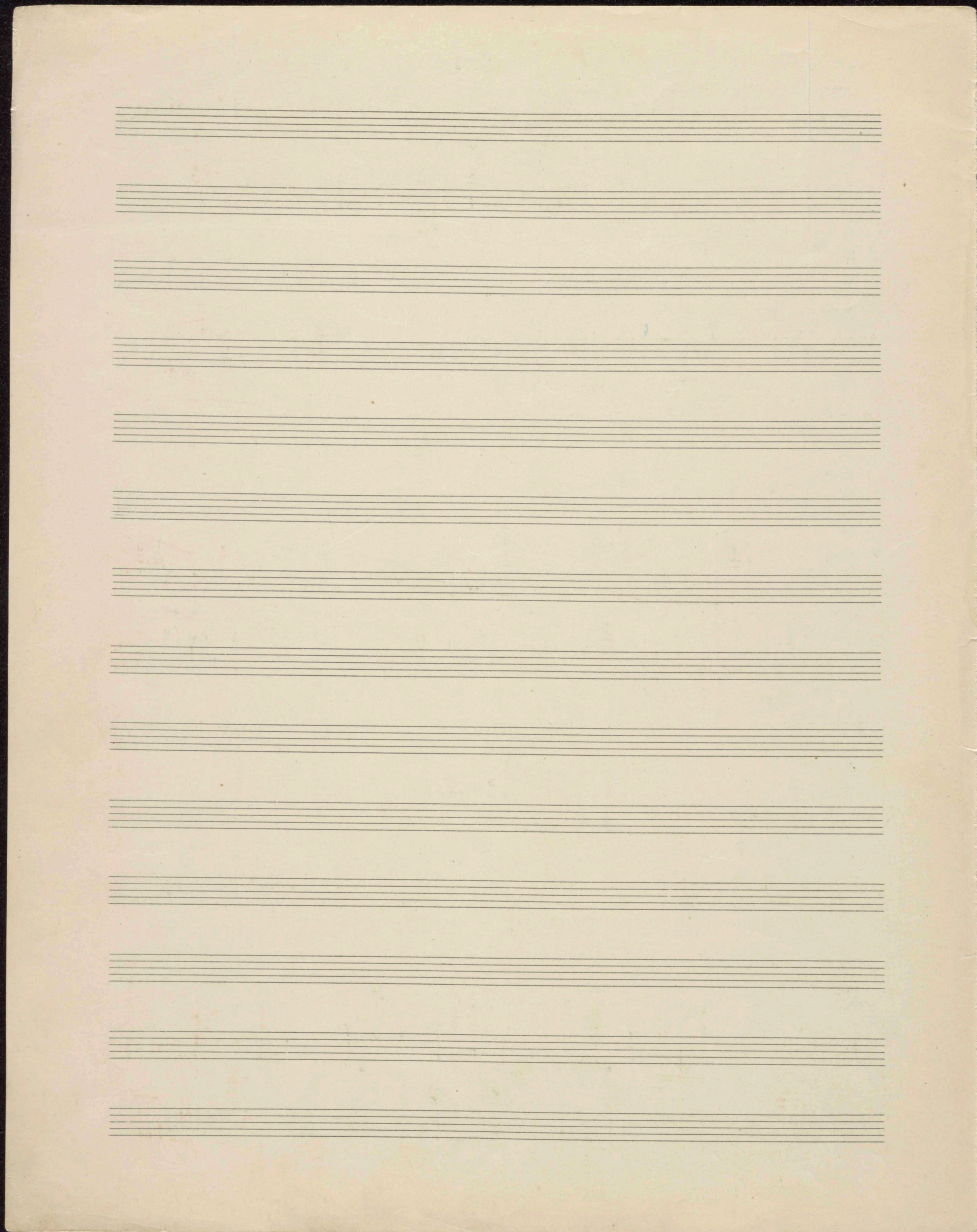
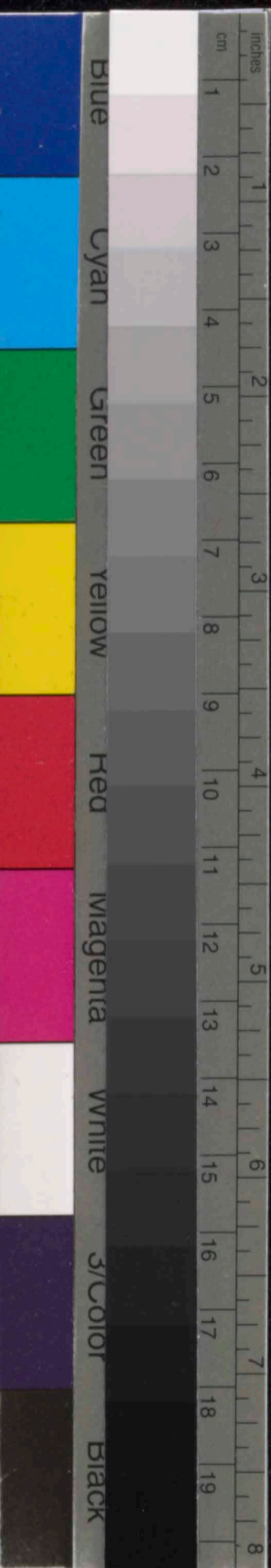
R

9537



Nº 3
14 linig.





I.

Anton Webern, op. 19

Lebhaft, leicht und frei (♩ = ca 104) rit..... tempo

Sopran

Alt

Tenor

Bass

Celesta **)

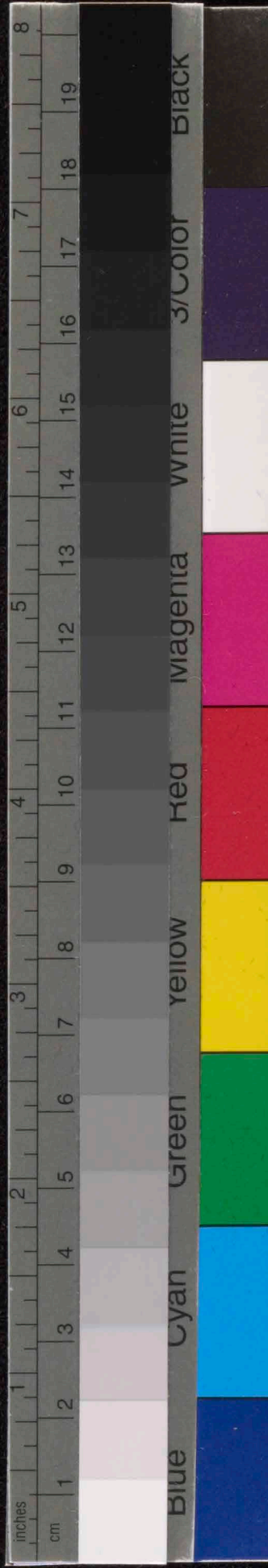
Gitarre *)

Geige

Klarinette *)

Bass Klarinette *)
14 linig

*) Klingt wie notiert
 **) " um eine Oktave höher



rit. *tempo*

10/10
5 *6 4 5* 7 8

3/4 *2/4* *3/4*

rit. *tempo*

WeiB wie Li - lien, rei - ne
WeiB wie Li - lien,
WeiB wie Li - lien,
WeiB wie Li - lien,

10/10 *3* *3*

3/4 *2/4* *3/4*

rit. *tempo*

10/10 *3* *3*

3/4 *2/4* *3/4*

rit. *tempo*

10/10 *3*

3/4 *2/4* *3/4*

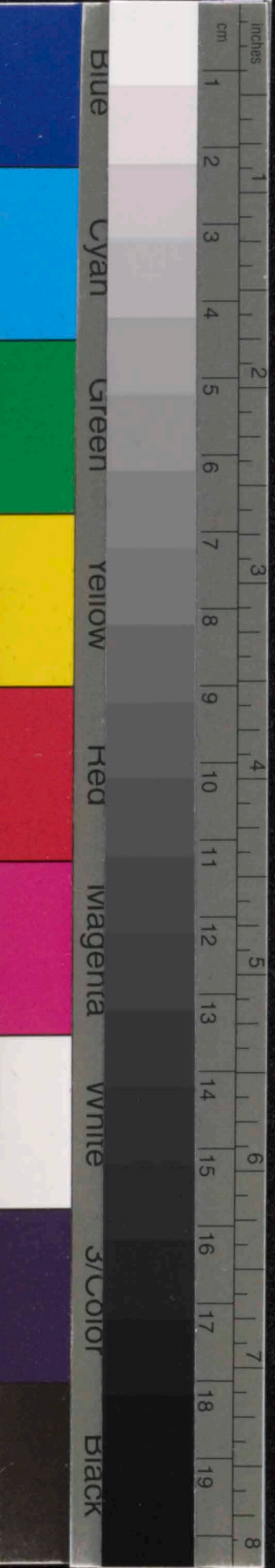
10/10 *3*

3/4 *2/4* *3/4*

10/10 *3*

3/4 *2/4* *3/4*

Empty musical staff



S
A
T
B
Cel
St
Sg
Kl
Bskl

S
Ker-zen, Her — neu gleich, leuch — tet aus dem

A.
rei — ne Ker — zen, be-scheid — ner Beu-gung,

T
rei — ne Ker — zen, be-scheid — ner Beu-gung, leuch-

B
rei — ne Ker — zen, be-scheid — ner Beu-gung,

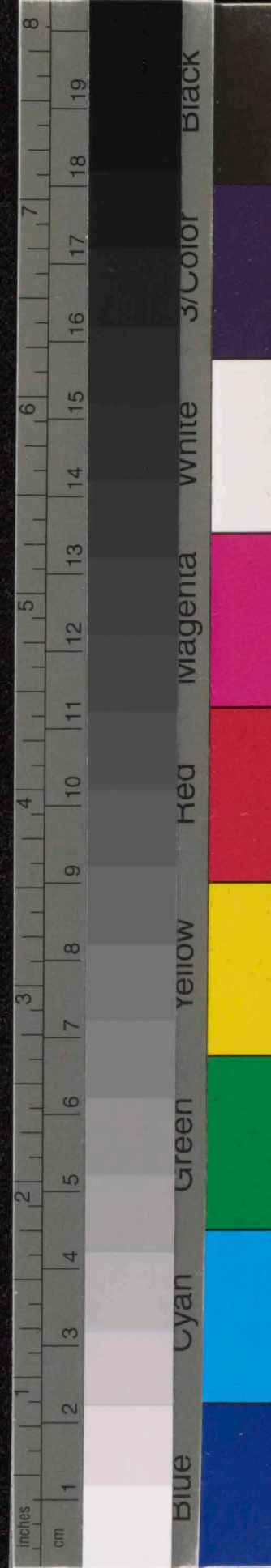
Cel

St

Sg

Kl

Baskl



rit- - - - -

S Mit tel-her-zen rot ge-säumt die Blut der Nei-gung.

A. leuch-tet aus dem Mit tel-her-zen rot ge-säumt die

T tet aus dem Mit tel-her-zen rot ge-säumt die

B leuch-tet aus dem Mit tel-her-zen rot ge-säumt die

Cel

Sf

Sg

Kl

BsKl

tempo

15 16 17

Soprano (S): *Slut der Nei-gung. So früh — zei-ti-ge Nar-*

Alto (A): *Slut der Nei-gung.*

Tenore (T): *Slut der Nei-gung.*

Basso (B): *Slut der Nei-gung. So*

Cel

St

Sg

KE

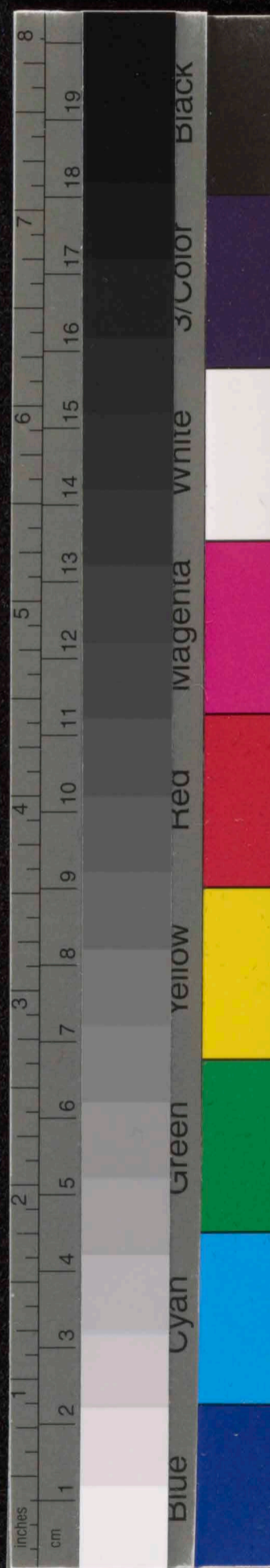
BsKE

Patenk. Schutzmarke

 No 3

 14 linig

UNIVERSAL-EDITION



18

Soprano (S): So früh — zeiti-ge Nar- cis — sen bli — hen

Alto (A): Zei — sen bli — hen rei — hen — weis im Sar — ten.

Tenore (T): So — früh — zeiti — ge Nar — Zei — sen blihen rei — hen

Basso (B): früh — zeiti-ge Nar — cis — sen bli — hen rei — hen — weis im Sar — ten.

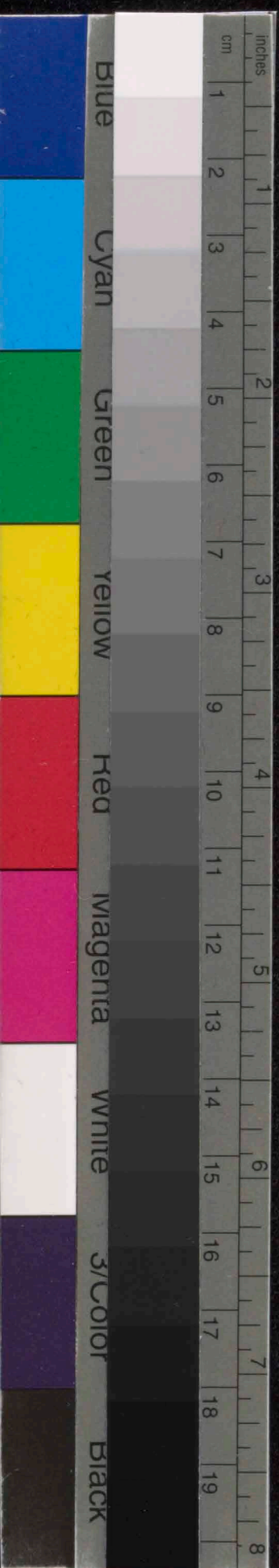
Cel

St

Sg

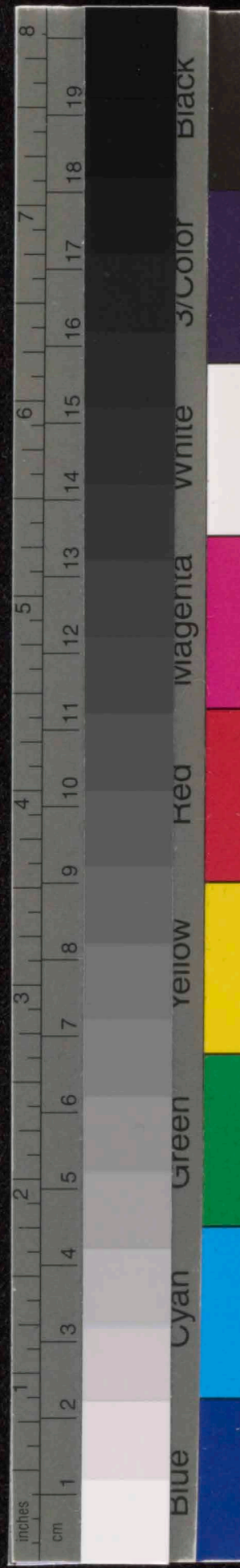
Ke

BsKe



Mit... Tempo

Handwritten musical score for a vocal quartet and instrumental ensemble. The score is divided into three systems, each containing four staves. The vocal parts are Soprano (S), Alto (A), Tenor (T), and Bass (B). The instrumental parts are Cello (Cel), String (St), Saxophone (Sg), Clarinet (Kl), and Bassoon (Bkl). The music is in 2/4, 3/4, and 2/4 time signatures. The lyrics are: "rei - hen - weis im Gar - ten. cllo - gen wohl". The score includes various musical notations such as triplets, slurs, and dynamic markings like *del* and *10/10*. Measure numbers 21, 22, and 23 are indicated at the top of the first system.



rit. tempo

Handwritten musical score for voices (Soprano, Alto, Tenor, Bass) and piano accompaniment. The score is divided into three measures, numbered 24, 25, and 26. The lyrics are: "ger wohl die gu-ten wis- sen, wen sie Mö- ger wohl die gu-ten wis- sen, wen sie so spa- die gu- ten wis- sen, wen sie so spa-". The music includes various dynamics such as *pp*, *dim.*, and *f*, and includes triplets and other rhythmic markings.

Handwritten musical score for Cello (Cel) and Double Bass (Dbl). The score continues from the previous system, showing accompaniment for the lower strings. It includes dynamic markings like *pp* and *f*, and features complex rhythmic patterns and triplets.

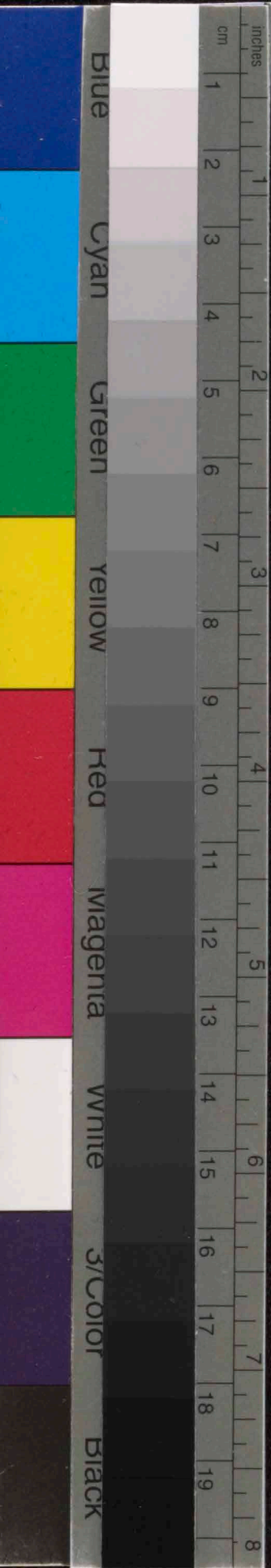
X yinward
Melchem
Sf

Handwritten musical score for Saxophone (Sax) and Double Bass (Dbl). The score continues from the previous system, showing accompaniment for the saxophone and double bass. It includes dynamic markings like *pp*, *f*, and *sf*, and features complex rhythmic patterns and triplets.

Handwritten musical score for Saxophone (Sax). The score continues from the previous system, showing accompaniment for the saxophone. It includes dynamic markings like *pp* and *f*, and features complex rhythmic patterns and triplets.

Handwritten musical score for Keyboard (Ke). The score continues from the previous system, showing accompaniment for the keyboard. It includes dynamic markings like *pp* and *f*, and features complex rhythmic patterns and triplets.

Handwritten musical score for Bassoon (BKe). The score continues from the previous system, showing accompaniment for the bassoon. It includes dynamic markings like *pp* and *f*, and features complex rhythmic patterns and triplets.



rit. *tempo*

S
so spa - liert er - war - ten.

A
liert er - war - ten.

T
wenn sie so - spa - liert er - war - ten.

B
liert er - war - ten.

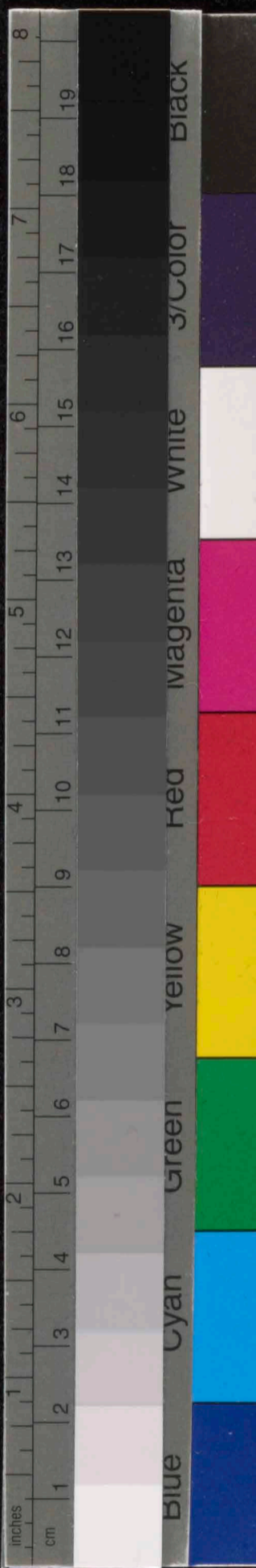
Cel
ff *ff* *ff*

St
cl *ff* *ff*

Sg
cl *ff* *ff*

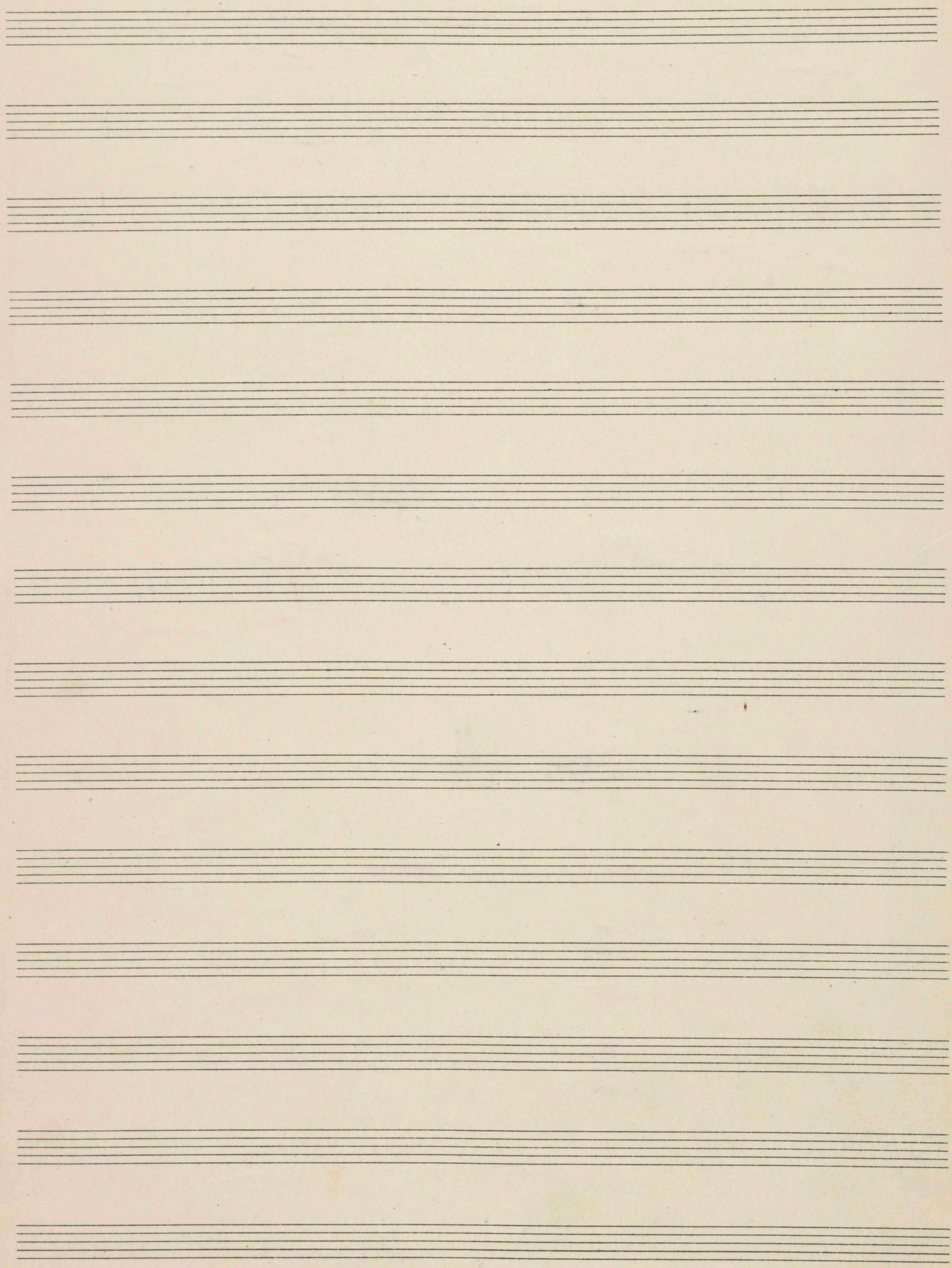
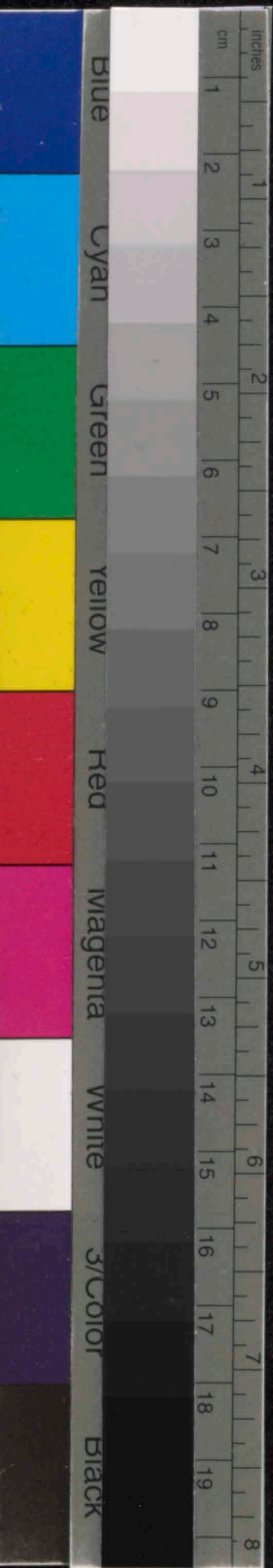
Ke
cl *ff* *ff*

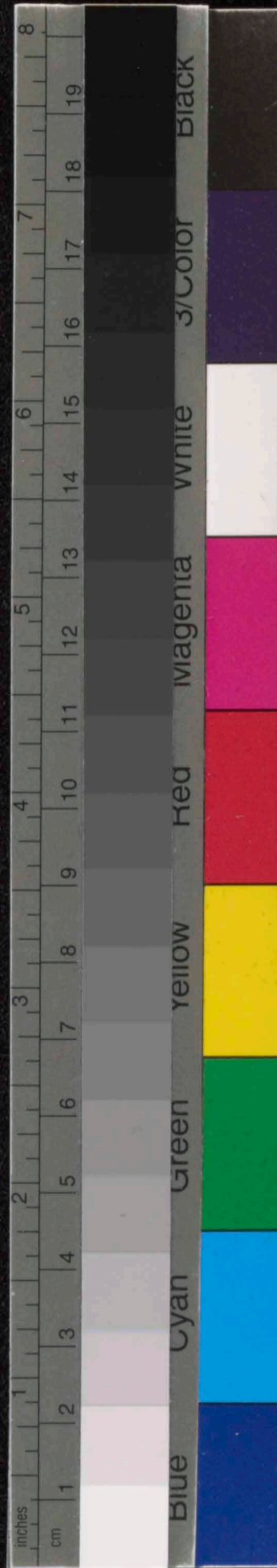
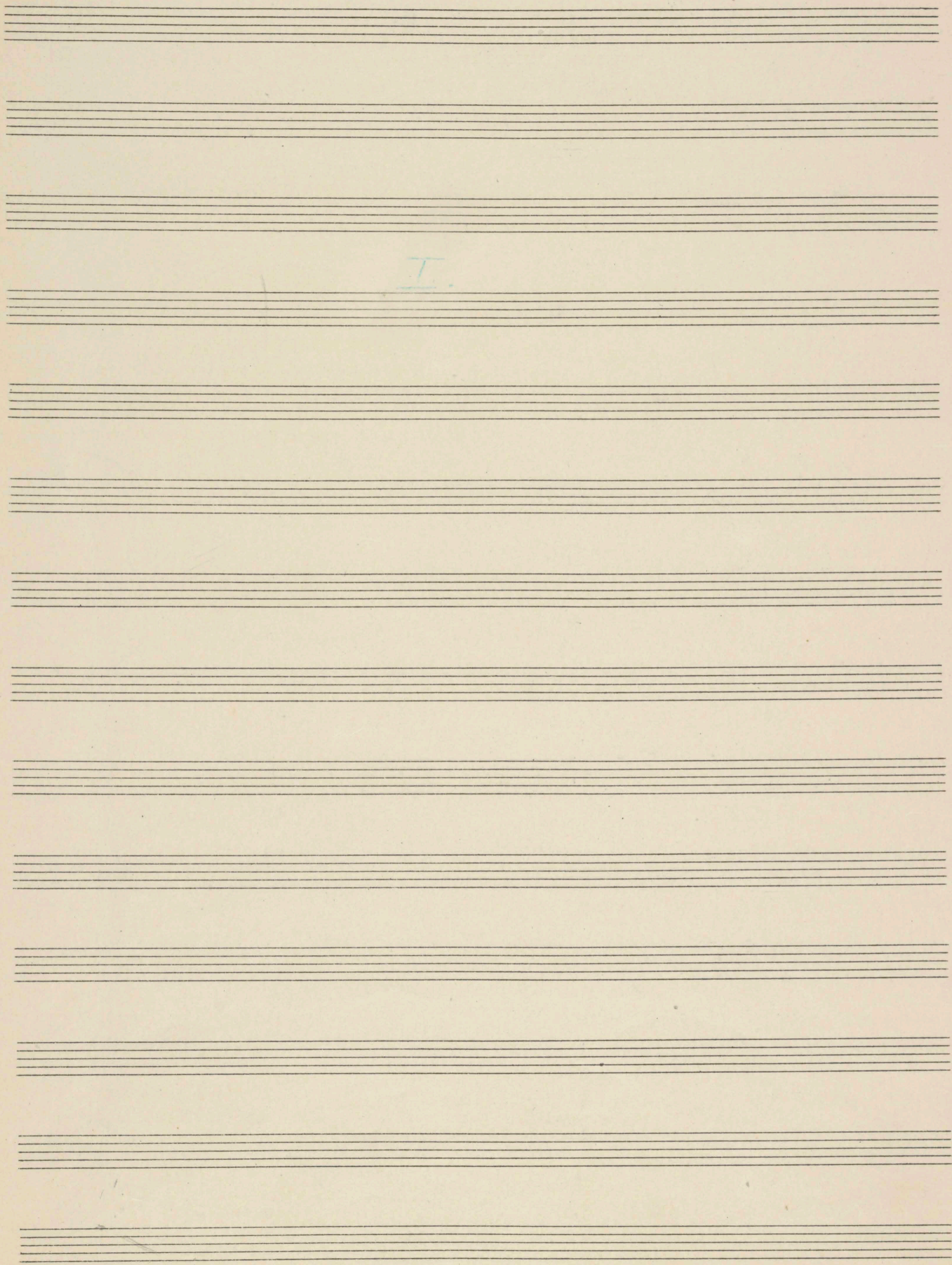
Bask
cl *ff* *ff*

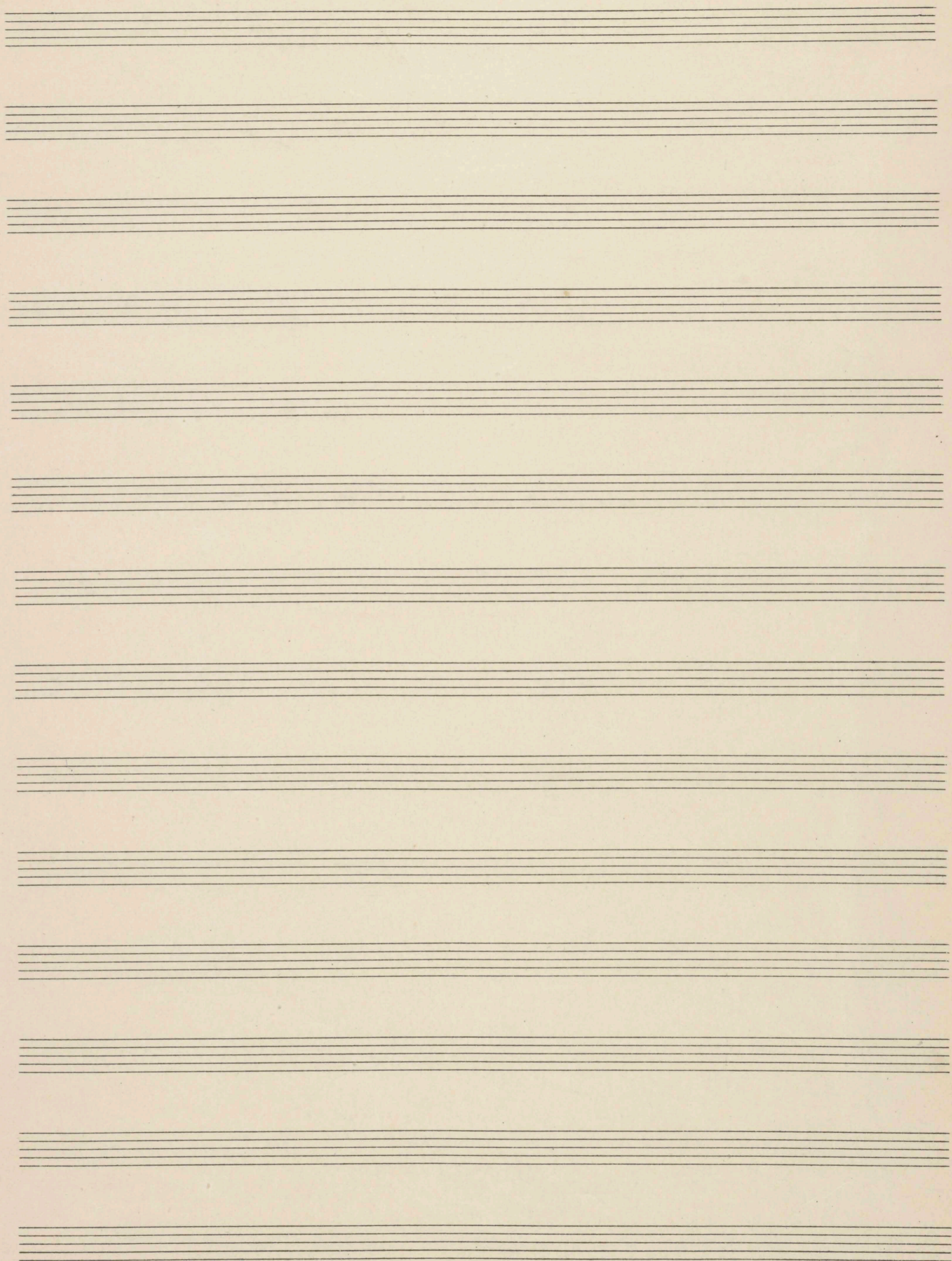
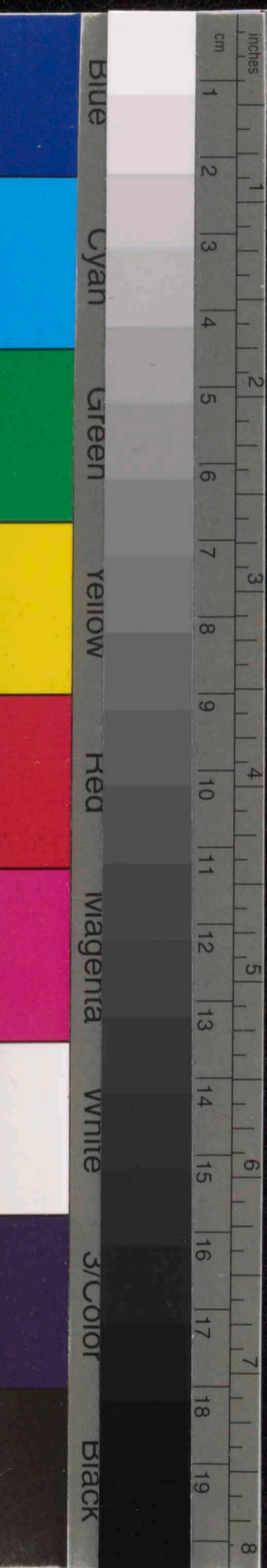


Protokoll Schuttmärke
 No 3
 14 linig

UNIVERSAL-EDITION
 ARCHIV







111

II.

Sehr gemächlich (♩ = ca 60)

Vocal staves:

- Sopran
- Alt
- Tenor
- Bass

Each staff is in 2/4 time and contains a whole rest for the first four measures.

Celesta

Two staves in 2/4 time. The upper staff has a whole rest in the first three measures, followed by a half note G4 in the fourth measure. The lower staff has a whole rest in the first three measures, followed by a half note F4 in the fourth measure.

Sitarre

Staff in 2/4 time. Measure 1: quarter notes G4, A4. Measure 2: quarter notes G4, A4. Measure 3: quarter notes G4, A4. Measure 4: quarter notes G4, A4.

Seige

Staff in 2/4 time. Measure 1: whole rest. Measure 2: whole rest. Measure 3: quarter notes G4, A4. Measure 4: quarter notes G4, A4.

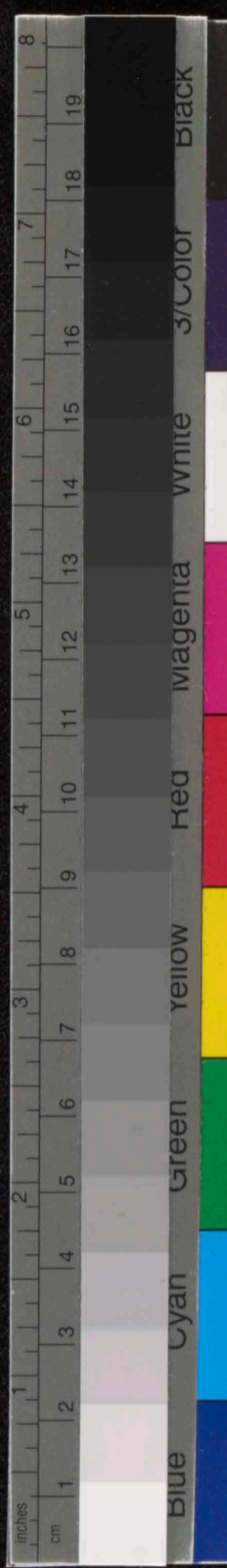
Klarinette

Staff in 2/4 time. Measure 1: quarter notes G4, A4. Measure 2: quarter notes G4, A4. Measure 3: quarter notes G4, A4. Measure 4: quarter notes G4, A4.


 Protokoll Scherzmann
 Bass-Klarinette
 14 linig

Bass-Klarinette

Staff in 2/4 time. Measure 1: whole rest. Measure 2: whole rest. Measure 3: quarter notes G4, A4. Measure 4: quarter notes G4, A4.



rit. tempo

Handwritten musical score for voice and instruments. The score is divided into vocal parts (Soprano, Alto, Tenor, Bass) and instrumental parts (Cello, String, String Quartet, Clarinet, Bassoon).

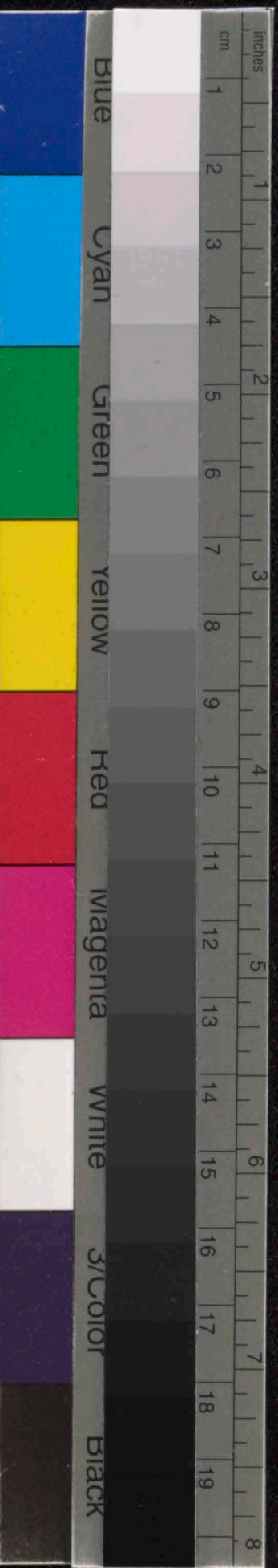
Vocal Parts:

- Soprano (S):** Ziehn die Scha - fe von der Wie - se,
- Alto (A):** Ziehn die Scha - fe von der Wie - se,
- Tenor (T):** ziehn die Scha - fe von der Wiese,
- Bass (B):** Ziehn die Scha - fe von der Wiese,

Instrumental Parts:

- Cel (Cello):** Accompanying the vocal lines with chords and melodic fragments.
- St (String):** Provides harmonic support with sustained chords.
- Sg (String Quartet):** Features a section marked *arco* (arco) with rhythmic patterns.
- Kl (Clarinet):** Accompanying with melodic lines and dynamic markings like *sfz*.
- BsKl (Bassoon):** Accompanying with melodic lines and dynamic markings like *p*.

The score includes various musical notations such as notes, rests, slurs, and dynamic markings. The vocal parts are written in a four-part setting, and the instrumental parts are arranged in a standard orchestral layout.



rit. *tempo*

Handwritten musical score for vocal and instrumental parts. The score is divided into three systems, each containing four staves. The vocal parts (Soprano, Alto, Tenor, Bass) are at the top, followed by Cello (Cel.), String (St.), Saxophone (Sg.), Clarinet (Kl.), and Bassoon (BasKl.).

System 1 (Measures 8-10):

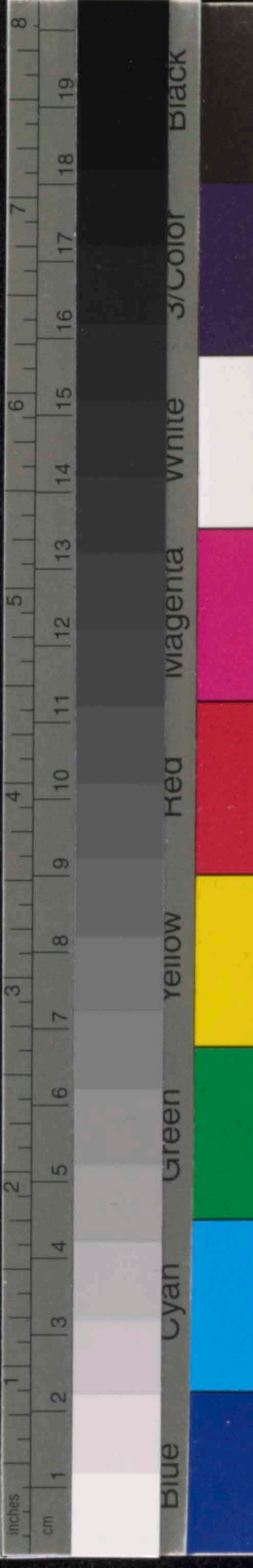
- Vocal Parts:** Lyrics: "liegt sie da, ein rei-nes Grün; a-ber". Dynamics: *mf dim.* (measures 8-9), *mf* (measure 10).
- Cel.:** Accompanying cello part with various articulations and dynamics.
- St.:** String accompaniment with dynamics like *f*, *mf*, and *cl*.
- Sg.:** Saxophone part with dynamics like *mf dim.* and *arco*.
- Kl.:** Clarinet part with dynamics like *mf dim.* and *pp*.
- BasKl.:** Bassoon part with dynamics like *mf dim.* and *pp*.

System 2 (Measures 11-13):

- Vocal Parts:** Lyrics: "liegt sie da, ein rei-nes Grün;". Dynamics: *mf* (measure 11), *pp* (measure 12).
- Cel.:** Continues accompaniment.
- St.:** Continues accompaniment.
- Sg.:** Continues accompaniment.
- Kl.:** Continues accompaniment.
- BasKl.:** Continues accompaniment.

System 3 (Measures 14-16):

- Vocal Parts:** Lyrics: "liegt sie da, ein rei-nes Grün;". Dynamics: *mf* (measure 14), *pp* (measure 15).
- Cel.:** Continues accompaniment.
- St.:** Continues accompaniment.
- Sg.:** Continues accompaniment.
- Kl.:** Continues accompaniment.
- BasKl.:** Continues accompaniment.



Handwritten musical score for a vocal quartet and piano accompaniment. The score is divided into four systems. The first system contains the vocal parts (Soprano, Alto, Tenor, Bass) and the piano accompaniment (Cello/Double Bass and String Quartet). The lyrics are in German and describe a journey to Paradise. The second system continues the piano accompaniment. The third system continues the piano accompaniment. The fourth system continues the piano accompaniment. The score includes various musical notations such as notes, rests, dynamics, and articulation marks.

rit.

S
A
T
B

bald zum Pa-ra-die-se wird sie bunt-ge-bliint er-
bald zum Pa-ra-die-se wird sie bunt-ge-bliint er-
a-ber bald zum Pa-ra-die-se wird sie bunt-ge-bliint er-
a-ber bald zum Pa-ra-die-se wird sie bunt-ge-bliint er-

ap
Cel

St

Sg

Kl

Bskl

tempo

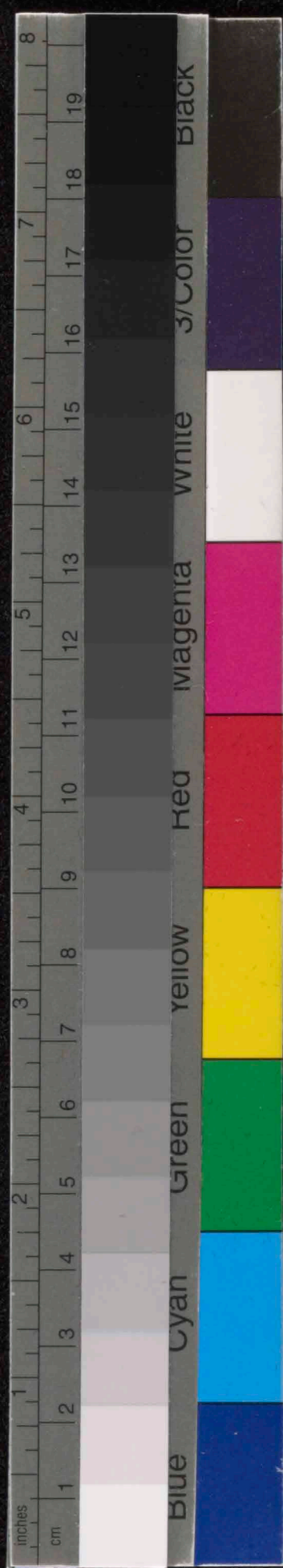
Handwritten musical score for voice and piano. The score is divided into three measures, numbered 14, 15, and 16. The vocal parts (Soprano, Alto, Tenor, Bass) and piano accompaniment (Cello, Strings, Organ, Keyboard, Bass) are clearly marked.

Vocal Parts:

- Soprano (S):** *blühn.* | *hoffnung breitet* | *leichte Schleier*
- Alto (A):** *blühn.* | — | —
- Tenor (T):** *blühn.* | *hoffnung* | *breitet* | *leichte Schleier*
- Bass (B):** *blühn.* | — | *hoffnung breitet*

Piano Accompaniment:

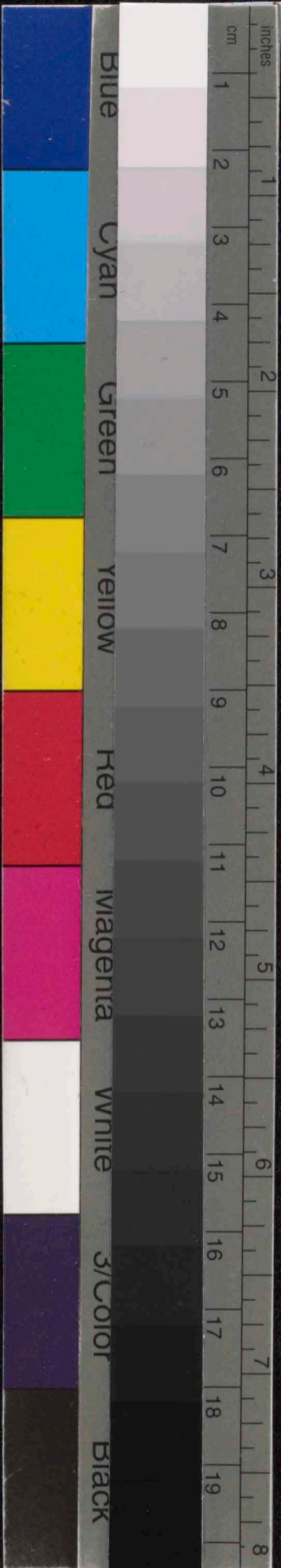
- Cel (Cello):** Accompanying the vocal lines with chords and melodic fragments.
- St (Strings):** Providing harmonic support with various dynamics like *sf* and *sfz*.
- Sg (Organ):** Features a *trio* section with *dim.* markings.
- Kl (Keyboard):** Accompanying the organ with *dim.* markings.
- Bskl (Bass):** Providing the bass line with *dim.* markings.



rit..... tempo

Handwritten musical score for vocal parts (Soprano, Alto, Tenor, Bass) and piano accompaniment. The vocal lines include lyrics in German: "ne-bel-haft vor un-ser-nem Blick: - Wunsch - er - fül - lung," "leich - te Schleier ne - bel - haft vor un - ser - nem Blick: - Wunsch - er - fül - lung," and "leich - te Schleier ne - bel - haft vor un - ser - nem Blick: - Wunsch - er - fül - lung." The piano accompaniment includes parts for Cello (Cel) and Strings (St).

Handwritten musical score for string and woodwind parts. The parts include Cello (Cel), Strings (St), Saxophone (Sg), Clarinet (Cl), and Bassoon (Bskl). The score features complex rhythmic patterns and dynamic markings such as *dim.*, *clol*, and *mp*.



rit. P. ca 120

20 21 22

S
Wol - ken - tei - lung bring - uns Glück!

A
Son - nen - fei - er, bring' uns Glück!

T
Wol - ken - tei - lung bring' uns Glück!

B
- nen - fei - er, bring' uns Glück!

Cel

St

Sg

Kl

Bs Kl

1926

