

Corno 3<sup>o</sup> in Fa

Preludio, Corale e Fuga.

Op. 20 Respighi

2

# Preludio *in Fa*

*Lento*

*Prato*

*pp*

*p*

*mf*

*p*

*p*

*p*

*p*

(1)

(2)

(3)

(4)

*Org. - poco*

Handwritten musical notation for the first section, consisting of five staves. The notation includes various notes, rests, and dynamic markings such as 'p.' and 'ff'.

*Corale*

Handwritten musical notation for the 'Corale' section, consisting of five staves. It includes tempo markings 'molto rit.' and 'Lento', and a large '8' at the end of the final staff.

4

(6)

*p. legato*

(7)

*pp.* *p. cresc.*  
*f.* *rit.*  
*p.*

(8)

*p.* *rento. . . affai*  
*mf.*  
*dim.*  
*Con Sordino* *f.* *pp.*  
*rit.*

9  
Tregal

(9) Via Sordino

5

all:  $\text{♩} = \frac{4}{4}$   $\text{♩} = \frac{6}{4}$

(10)

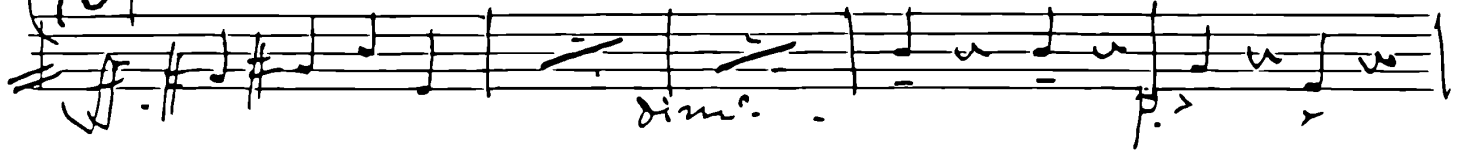
Meno mosso

V.V.

*rit.*



(13)



*dim.*

*p.*

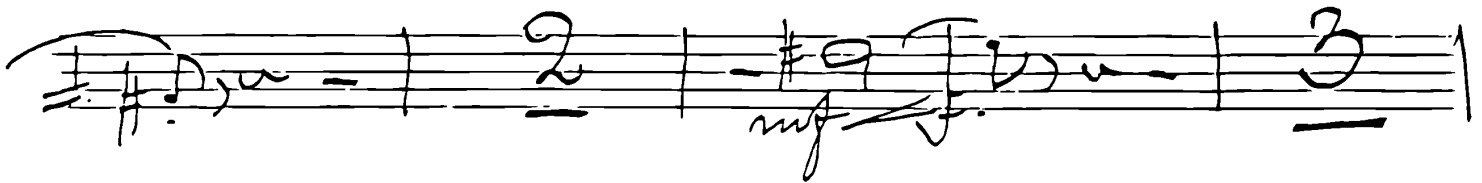


*p.*

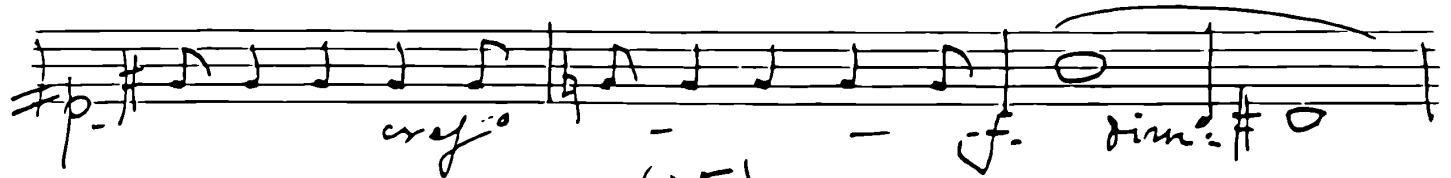
(14)



*pp.*



*mf*



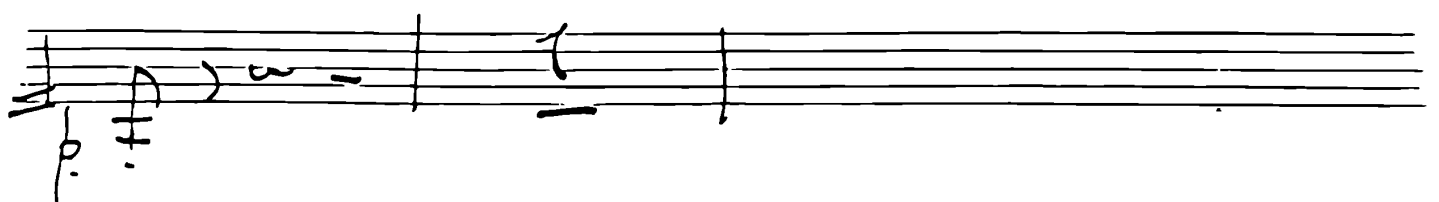
*cresc.*

(15)

*molto sost.*



*tempo*



*p.*

46)

7

Handwritten musical score for measures 46-50. The first staff begins with a dynamic marking of *mf.* and a *cres.* (crescendo) marking, followed by a fermata. The second and third staves contain melodic lines with various notes and accidentals. The fourth staff has a *rit.* (ritardando) marking. The fifth staff continues the melodic line.

(17)

Handwritten musical score for measures 51-54. The first staff starts with a tempo marking of *Presto* and a dynamic marking of *f.* (forte). The second and third staves contain melodic lines with many notes and accents. The fourth staff continues the melodic line.

8

Segue

Two empty musical staves at the bottom of the page.

8

(18)

*Primo*

Handwritten musical notation for measures 18-22. The first staff begins with a treble clef and a key signature of one sharp (F#). The notes are quarter notes with accents. The second staff continues the melody with some notes beamed together. The third staff ends with a 'rit.' marking.

*Largamente*

Handwritten musical notation for measures 23-27. The first staff starts with a treble clef and a key signature of one sharp (F#). The notes are half notes. The second and third staves continue the melody with various note values and rests.

(19)

Handwritten musical notation for measures 28-31. The first staff starts with a treble clef and a key signature of one sharp (F#). The notes are quarter notes. The second and third staves continue the melody with various note values and rests.

(20)

Handwritten musical notation for measure 32. It consists of one staff with a treble clef and a key signature of one sharp (F#). The notes are half notes, with a long rest in the second measure.



*Lento assai*

*Con Sordino*

(21)