

QUARTETT

Revidiert vom
Zernick - Quartett

I

Engelbert Humperdinck

Allegro moderato

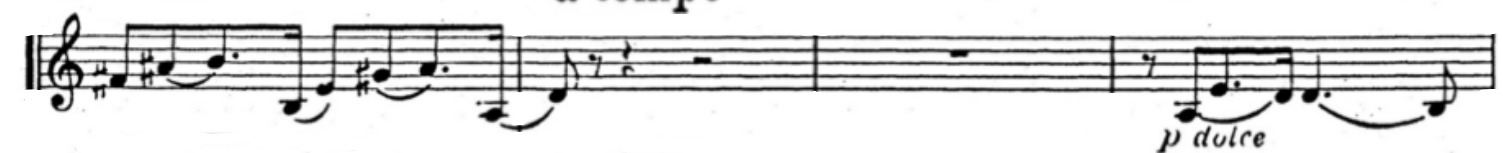
Violino II

The musical score for Violino II is written in 4/4 time and consists of seven staves. The first staff begins with a treble clef, a key signature of one flat (B-flat), and a 4/4 time signature. It starts with a half rest followed by a half note B-flat, then a half note A, and a half note G, all marked with a piano (*p*) dynamic. The second staff contains a first ending bracket labeled '1' over a half note B-flat and a half note A, followed by a half note G, then a half note F, and a half note E, all marked with a piano (*p*) dynamic. The third staff begins with a half note B-flat, then a half note A, and a half note G, all marked with a piano (*p*) dynamic. The fourth staff contains a second ending bracket labeled '2' over a half note B-flat and a half note A, followed by a half note G, then a half note F, and a half note E, all marked with a piano (*p*) dynamic. The fifth staff begins with a half note B-flat, then a half note A, and a half note G, all marked with a piano (*p*) dynamic. The sixth staff contains a half note B-flat, then a half note A, and a half note G, all marked with a piano (*p*) dynamic. The seventh staff begins with a half note B-flat, then a half note A, and a half note G, all marked with a piano (*p*) dynamic.



ritard.

a tempo



5

Section 5, measures 1-4. The first staff begins with a treble clef and a key signature of one sharp (F#). It contains a half rest, followed by a half note G4, and then a half note A4. The second staff continues with a half note B4, a half note C5, and a half note D5. The third staff contains a half note E5, a half note F#5, and a half note G5. The fourth staff contains a half note A5, a half note B5, and a half note C6. Dynamics include *fp* (fortissimo piano) and *dim.* (diminuendo). Trills are marked with *tr.* and *dim.* (diminuendo).

6

Section 6, measures 5-8. The first staff begins with a treble clef and a key signature of one sharp (F#). It contains a half rest, followed by a half note G4, and then a half note A4. The second staff continues with a half note B4, a half note C5, and a half note D5. The third staff contains a half note E5, a half note F#5, and a half note G5. The fourth staff contains a half note A5, a half note B5, and a half note C6. Dynamics include *mf* (mezzo-forte), *f* (forte), *cresc.* (crescendo), *ff* (fortissimo), and *riten.* (ritardando). Trills are marked with *tr.* and *dim.* (diminuendo).

7 a tempo

Section 7, measures 9-12. The first staff begins with a treble clef and a key signature of one sharp (F#). It contains a half rest, followed by a half note G4, and then a half note A4. The second staff continues with a half note B4, a half note C5, and a half note D5. The third staff contains a half note E5, a half note F#5, and a half note G5. The fourth staff contains a half note A5, a half note B5, and a half note C6. Dynamics include *dolce* (dolce), *p* (piano), *f* (forte), *pizz.* (pizzicato), and *arco* (arco). Trills are marked with *tr.* and *dim.* (diminuendo).



8



9



10



II

7

Gemächlich

5

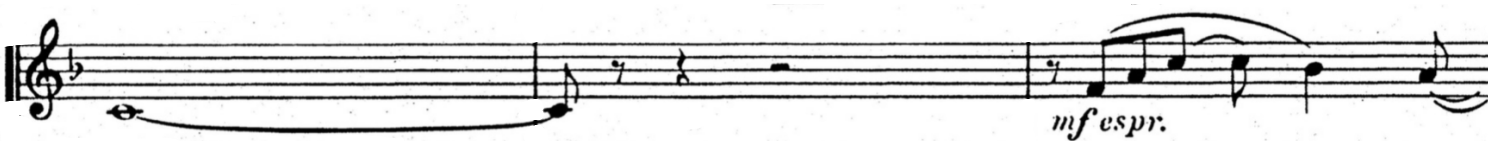
11 pizz. *f* arco *p* pizz. *f* *p* *f*

12 Mit inniger Empfindung

arco *p* mit Ausdruck *f* dim.

poco riten.

13 Wie zuvor *p*



15

Ruhiger

 $\frac{6}{4} \left(\frac{3}{2} \right)$ 

16





III

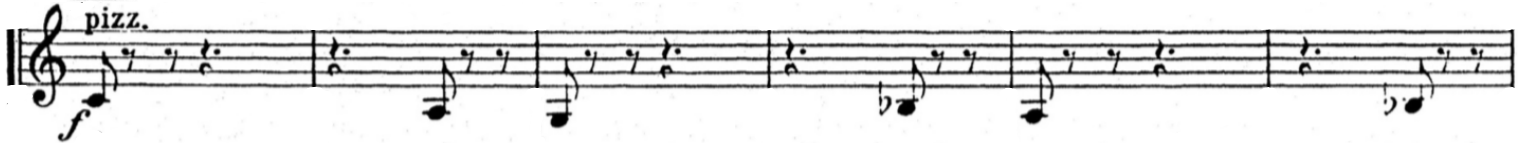
17

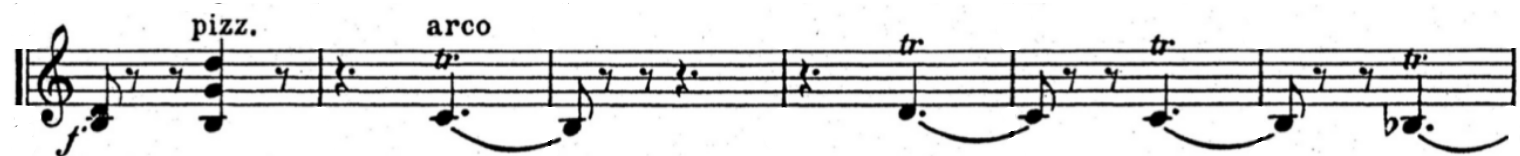
Lebhaft



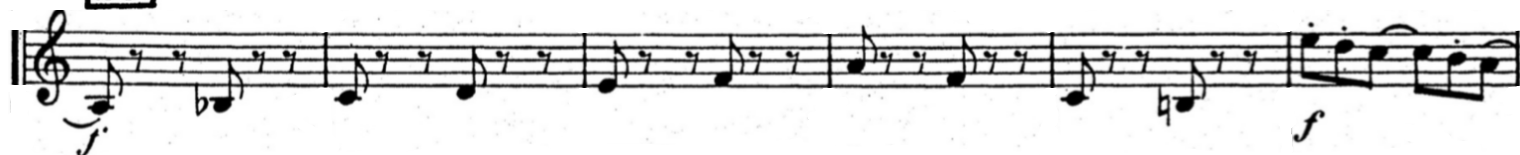
18

pizz.





19



20



21





22



23

Etwas ruhiger

pizz.



24



