

# DER GRAF VON LUXEMBURG

Operette in drei Akten von A. M. Willner und Rob. Bodanzky

Musik von **FRANZ LEHÁR**

2. Fagott

## ERSTER AKT:

### Nr. 1 Introduction

Entrée Luxemburg, Ballett-Faschingsmarsch. (René, Juliette, Brissard, Chor)

*Allegro*  
12 *mf* 4

*f* 2 *f* 4

1 *Tempo di Marcia* 2 *f* 16

3 4 *Animato* 16 8 *ff*

*rit.* 5 *Grave* 3 *mf* *ff*

6 *Allegro* *f* *mf* *cresc.* *f* *ff*

*rit.*

2. Fagott

7 Allegretto non troppo

Two staves of musical notation in bass clef, 4/4 time. The first staff begins with a dynamic marking of *p*. The second staff begins with a dynamic marking of *mf*.

*meno*

rit. 8 Allegro

Two staves of musical notation in bass clef, 4/4 time. The first staff has a measure rest for 4 measures, then begins with a dynamic marking of *mf*. The second staff begins with a dynamic marking of *f* and ends with a dynamic marking of *p*.

Two staves of musical notation in bass clef, 4/4 time. The first staff begins with a dynamic marking of *f* and ends with a dynamic marking of *mf*. The second staff begins with a dynamic marking of *f*.

Two staves of musical notation in bass clef, 4/4 time. The first staff begins with a dynamic marking of *f*. The second staff begins with a dynamic marking of *f*.

Two staves of musical notation in bass clef, 4/4 time. The first staff begins with a dynamic marking of *p* and ends with a dynamic marking of *mf*. The second staff begins with a dynamic marking of *mf*.

Two staves of musical notation in bass clef, 4/4 time. The first staff has first and second endings, both starting with a dynamic marking of *f*. The second staff begins with a dynamic marking of *ff* and ends with the instruction *attaca*.

Faschings - Marsch

9 Tempo di Marcia

Two staves of musical notation in bass clef, 2/4 time. The first staff begins with a dynamic marking of *p* and ends with a dynamic marking of *mf*. The second staff begins with a dynamic marking of *f*.

Two staves of musical notation in bass clef, 2/4 time. The first staff begins with a dynamic marking of *f*. The second staff begins with a dynamic marking of *f*.

Two staves of musical notation in bass clef, 2/4 time. The first staff has a *rit.* marking over a phrase and an *a tempo* marking at the start of the next phrase. Dynamics include *ff*, *ff*, *p*, and *sf*. The second staff begins with a dynamic marking of *ff*.

Two staves of musical notation in bass clef, 2/4 time. The first staff begins with a dynamic marking of *ff* and ends with a dynamic marking of *f*. The second staff begins with a dynamic marking of *p*.

2. Fagott

10

*ff* *p*

*cresc.*

11

*f* *ff* *p*

12

Trio

*p*

# 2. Fagott

13 *p* *f marc.* *ff* *rit.*

14 *Grandioso* *ff* *ff*

15 *Temp di marcia* 16 *Allegro* 16 8 4

*mf* *rit.* 7 *p* 8 *f*

Detailed description: This block contains the musical notation for the second bassoon part. It consists of ten staves of music. The first staff begins with a piano (*p*) dynamic and a *f marc.* (f marcato) instruction. A box containing the number 13 is placed above the staff. The second staff ends with a fortissimo (*ff*) dynamic and a *rit.* (ritardando) instruction. The third staff starts with a box containing 14 and the tempo marking *Grandioso*, followed by a fortissimo (*ff*) dynamic. The fourth staff ends with a fortissimo (*ff*) dynamic. The fifth staff ends with a fortissimo (*ff*) dynamic. The sixth staff begins with a mezzo-forte (*mf*) dynamic and a *rit.* instruction. A box containing 15 is placed above the staff, followed by the tempo marking *Temp di marcia*. The seventh staff contains a box with 16 and the tempo marking *Allegro*. Below the seventh staff are the numbers 16, 8, and 4, indicating measure counts. The eighth staff begins with a mezzo-forte (*mf*) dynamic. The ninth staff begins with a piano (*p*) dynamic and a *rit.* instruction. Below the ninth staff are the numbers 7 and 8, indicating measure counts. The tenth staff ends with a fortissimo (*f*) dynamic.

## Nr. 2 Bohème-Duett

(Juliette, Brissard)

*Allegretto moderato* *Etwas langsamer*

2 *f* *mf* *f* 32

*Animato* *rit.* *Tempo di Marcia* 6 2 16 *p*

Detailed description: This block contains the musical notation for the Bohème-Duett. It consists of two staves of music. The first staff begins with the tempo marking *Allegretto moderato*. Below the first staff are the numbers 2, *f*, *mf*, *f*, and 32, indicating measure counts and dynamics. The second staff begins with the tempo marking *Animato*, followed by a *rit.* (ritardando) instruction and the tempo marking *Tempo di Marcia*. Below the second staff are the numbers 6, 2, 16, and *p* (piano), indicating measure counts and dynamics. A tempo marking *Etwas langsamer* (slightly slower) is placed above the end of the first staff.

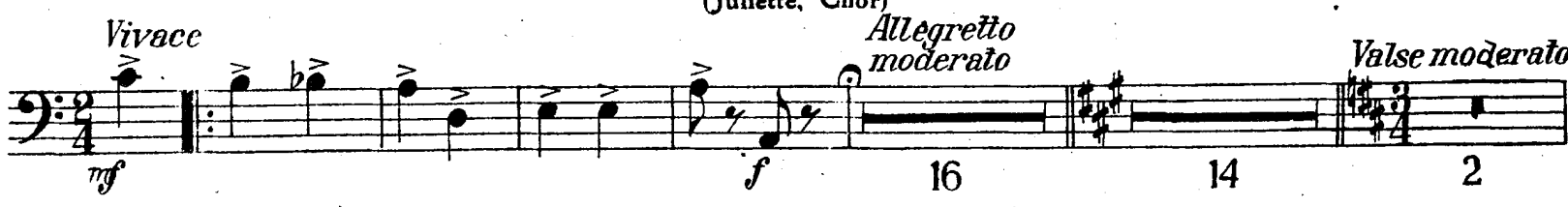
2. Fagott



Nr. 2 1/2 Tacet

Nr. 3 Chanson

(Juliette, Chor)



# 2. Fagott

## Nr. 3<sup>1/2</sup> Tacet Nr. 4 Reminiszenz (René, Chor)

*Allegro*

*f* *f* *cresc.* *ff*  
*ff* *rit.* *Allegro* *p*  
*f*  
*p* *mf* *f*  
*p*  
*Prestissimo* *f* *ff*

## Nr. 4<sup>1/2</sup> Tacet

## Nr. 5 Lied

(Basil, Pawlowitsch, Mentschikoff, Pélégriin)

*Mazurka moderato* *Moderato*

23 *p* 5 *mf* 2 24  
*Tempo I.* 21 *p* 5 *p* 2

## Nr. 6 Quintett

(René, Basil, Pawlowitsch, Mentschikoff, Pélégriin)

*Allegretto*

*f* *mf* *p* *mf*

# 2. Fagott

*p* *f* *fz* *fz* *mf*  
3 *fz* *fz* *fz* *mf*  
*rit.* *breit.* *a tempo*  
*p* 2 *f* 8 *p* *molto animato*  
*e sempre cresc. animato* *f* 3 *ff* *Solo tr.* *rit.* *Tempo I.*  
*mf* *rit.* *breit a tempo* *p*  
*Tempo I.* 6 *p* 3 *p*  
2 *f*

# Nr. 7 Entrée

(Angèle)

*Allegro* *Allegretto* *Allegro* *Mazurka* *pp* 9  
12 7 17 4 *rit.* *a tempo*  
*mf* 2 *mf* 10 4 *mf*  
*Mazurka* 9 4 *pp* 9 *mf* *rit.*  
*Presto*  
2 *mf* 6 5 *f*

# 2. Fagott

## Nr. 8 Finale I

(Juliette, Angèle, Brissard, René, Basil, Pawlowitsch, Mentschikoff, Pélégriin, Chor)

*Allegretto moderato* *L'istesso tempo* *Valse moderato*

*mf* 6 *p* 3 *p* 3 2

*p* *mf* *p* *rit.* *a tempo*

*Allegretto moderato* *rit.* *f* 6 *p* 3 *p*

*L'istesso tempo* *Valse moderato* *rit.* *a tempo*

3 2 *p* *mf* *p*

1 *Allegro* 2 *Allegretto* *rit.*

*f* *molto rit.* *D.C.* 16 8 *f*

*Valse moderato* 16 *mf*

3 *ppp* *Allegretto*

12 *p* 6 (Ev. D.C.) 2 *mf* 1 *p*

*rit.* 4 *Valse moderato* *rit.* 5 *Valse moderato*

2 1 16 2 *p*

*rit.* *a tempo* *mf* *p* *mf* *f*

6 *Moderato rit.* *a tempo rit.* 7 *Moderato*

*mf* *f* 6 *pp*

8 *Allegro*

*pp* 2 *sfz* *p* 11



2. Fagott

1 2 3 4 5 6

*f* *f* *ff*

**9** *Allegro moderato*

4 *f* *f*

*Moderato* **10** *Valse moderato*

1 *ff* 9 9 18

**11** *Allegretto*

*mf* 12 *p* 4 *ff*

*Tempo di marcia*

*mf*

*mf*

*meno* *rit.* **12** *Allegro*

4 *f* 1 *p*

*f* *mf*

**13** *Prestissimo*

*f* *mf* *ff*

*ff*

# ZWEITER AKT

## Nr. 9 Introduction und Lied

(Angèle, Ensemble)

*Allegro molto*

2. Fagott

Nr. 9<sup>1/2</sup> Tacet

Nr. 10 Polka Mazurka I

(Auftritt der Gesellschaft)

Mazurka

Nr. 11 Duett

(Angèle, René)

# Nr. 12 Tacet

# Nr. 13. Terzett

(Angèle, René, Basil)

*Allegro moderato* *rit.*

*f* *p* *f*

*Allegretto moderato* *altempo* *langsamer altempo* **1** *Animato*

2 *mf* *p* 4 4 *f* 3 6

*Allegretto moderato* *Valse (Bühnenmusik)* **2** *Orch. Einsatz* *rit*

2 *mf* *p* 32 13 3

**3** *Moderato altempo* *Allegro moderato* *L'istesso tempo* *Clar. 1 in B* *mf*

14 2 4

*f* *f*

**4** *langsamer*

4'

*altempo* *Moderato 1. fg.* *Maestoso breit*

*p* 2 2 *mf* *p*

**5** *Allegro moderato* *Allegretto moderato*

*p* *pp* 2 2

*rit.* *Valse (Bühnenmusik)* **6**

*mf* *p* 16 *f* *ff*

*Allegro molto*

*ff* *ff* *fff*

# Nr. 14 Trèfle incarnat

(René)

*Allegro* *poco meno* *Moderato*

*animato* *meno* *Allegro* *Moderato*

*D.C. Bewegt Allegretto*

*poco animato* *Allegretto moderato* *Allegro molto* *Moderato*

6 *mf* 3 3 *p* 2

*mf* 2 16 *pp*

2 2 *pp* 2 *p*

4 9 *ff* 4 *f ff*

Bei evnl. D.C. 2 letzte Takte Pausen.

# Nr. 15 Polka Mazurka II

(Auftritt der Gesellschaft)

*Mazurka*

4 *p* 2 *f*

8 *f*

# Nr. 16 Polkatänzer-Duett

(Juliette, Basil, Ballett)

*Marcia moderato* *Polka*

*ff* 6 *mf* 7 *pp*

*rit.* 2 *pp* 13 *mf* *f*

2 mal *ff* *pp* *mf* *ff*

*pp* *mf* *f* *attacca*

# 2. Fagott

*Allegro*

*ff* *f* *ff*

## Nr. 17 Finale II

(Angèle, Juliette, Brissard, René, Basil und Chor)

*Allegro* *meno*

*f* *f*

*rit. Allegretto* *sempre piu anim.* *Moderato*

2 32 14 *p* *f* 7 *f*

*Quadrille (Tempo vivace)*

*mf* 2 *ff*

*Kurzer Dialog*

*Walzer-Intermezzo*  
*Tempo di Valse*

1 *ff*

*fff*

4 5 6 7 8 1 3 1 *f*

*f*

2. Fagott

First staff of music, bass clef, key signature of two sharps (F# and C#). It begins with a series of eighth notes, followed by a half note, and then continues with eighth notes. A dynamic marking of *f* is present.

Second staff of music, bass clef, continuing the eighth-note pattern from the first staff.

2

Third staff of music, bass clef, starting with a whole rest for 16 measures, then continuing with eighth notes. A dynamic marking of *f* is present.

Fourth staff of music, bass clef, continuing the eighth-note pattern.

3

*langsamer*

4

5

6

*Tempo di Valse*

Fifth staff of music, bass clef, featuring a series of rests for measures 32, 32, and 27, followed by eighth notes. A dynamic marking of *f* is present.

Sixth staff of music, bass clef, continuing the eighth-note pattern. A dynamic marking of *ff* is present.

Seventh staff of music, bass clef, continuing the eighth-note pattern. A dynamic marking of *f* is present.

7

Eighth staff of music, bass clef, featuring a series of whole notes with a dynamic marking of *ff*.

Ninth staff of music, bass clef, continuing the whole-note pattern with a dynamic marking of *fff*.

*Allegro Allegretto Allegro moderato L'istesso tempo*

Tenth staff of music, bass clef, featuring rests for 11 and 9 measures, followed by notes. A dynamic marking of *f* is present.

*L'istesso tempo solo rit.*

*ff Moderato*

*Allegretto moderato rit.*

Eleventh staff of music, bass clef, featuring rests for 5 and 15 measures, followed by notes. Dynamic markings of *mf* and *p* are present.

Twelfth staff of music, bass clef, starting with *a tempo* and *mf*, followed by eighth notes and rests. Dynamic markings of *f* and *p* are present.

2. Fagott

9 Valse moderato

2 p rit. a tempo

rit. Vivace

10

1 2 3 4 5 6 7

Allegro moderato

rit. 11 Moderato

2 4 5

rit.

12 Allegro

= p 2 f p

meno

rit.

p mf f string. f

13 Allegretto moderato

Allegretto

rit.

14 Allegro

3 p p mf p f

15 Allegro

rit.

mf f 1 3

16 Allegretto

Allegretto moderato 17 Quasi Valse moderato

rit. Allegro

2 mf p 2 7 12 4

Presto

zurückhalten

molto rit.

ppp

18 Moderato sehr breit.

sehr breit

19

Allegro non troppo

4 mf f ff 3 4 p

Allegro

l'istesso tempo

20 Moderato a tempo

f 1 f marc sfz 11 f



*Allegro*

# DRITTER AKT

## Nr. 18 Introduction

(Ballett und Auftritt Kokozow)

*Allegro*

# Nr. 19 Couplet

(Kokozow)

*Tempo di Mazurka* *Allegretto moderato*

*rit. Moderato*

# Nr. 19½ Tacet

# Nr. 20 Marsch-Terzett

(Juliette, Brissard, Basil)

*Marcia*

# Nr. 21 Duett

(Angèle, René)

*Allegro Bewegt Moderato Maestoso rit. Moderato*

# Nr. 22 Finale III

(Angèle, René, Juliette, Brissard, Anatol Saville und seine Kollegen, Basil, Kokozow, Chor, Ballett, Hotelpersonal)

*Allegro 1. Trpt. Piu mosso*