

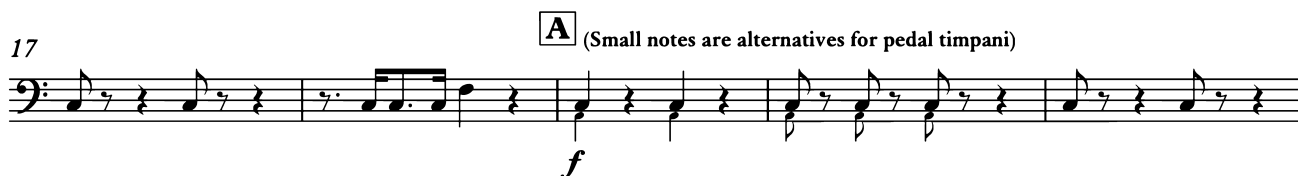
TIMPANI

Soldiers' chorus

(from *Il trovatore*)

GIUSEPPE VERDI

Moderato (♩ = 96) Allegro moderato maestoso (♩ = 96)



Timp.

46

Musical staff in bass clef with a common time signature. It contains six measures of music. The first measure has a whole note chord. The following four measures each contain a quarter note followed by an eighth note beamed to a quarter note. The final measure has a whole note chord. The dynamic marking *ff* is placed below the first measure.

52

D

Musical staff in bass clef with a common time signature. It contains four measures. The first measure has a whole note chord. The second measure has a quarter note followed by a quarter rest. The third and fourth measures each contain a quarter note followed by an eighth note beamed to a quarter note.

56

dim. e rall.

Musical staff in bass clef with a common time signature. It contains five measures. The first two measures each contain a quarter note followed by an eighth note beamed to a quarter note. The third measure has a quarter note followed by a quarter rest. The fourth and fifth measures are marked with a thick horizontal line and the numbers 8 and 6 respectively, indicating a fermata or a specific rhythmic value.