

Violoncello
[Viola da gamba]

SONATA III

J. S. Bach

Largo

p

4

7

10

14

18

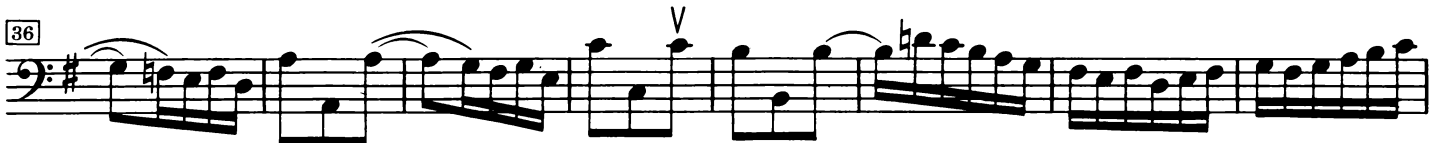
21

23

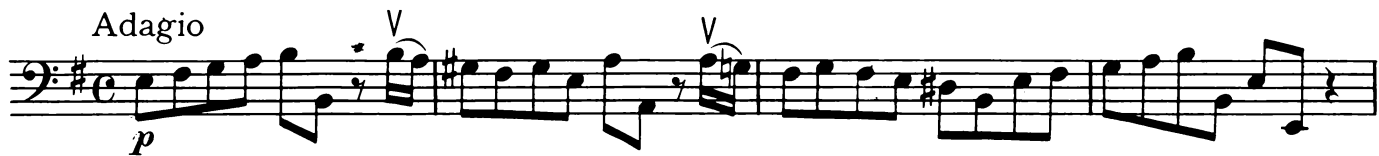
26

30

Vivace



Adagio



Violoncello <Viola da gamba>

Presto [Allegro assai]

First musical staff, starting with a forte (*f*) dynamic marking. The key signature is one sharp (F#) and the time signature is 3/4. The staff contains a series of eighth and sixteenth notes, including a triplet of eighth notes.

Second musical staff, starting with a measure number 4 in a box. The staff continues the melodic line with eighth and sixteenth notes.

Third musical staff, starting with a measure number 7 in a box. The staff features a mix of eighth and sixteenth notes.

Fourth musical staff, starting with a measure number 10 in a box. The staff includes a half note followed by eighth and sixteenth notes.

Fifth musical staff, starting with a measure number 14 in a box. The staff contains a complex rhythmic pattern with many sixteenth notes.

Sixth musical staff, starting with a measure number 16 in a box. The staff features a half note followed by eighth and sixteenth notes.

Seventh musical staff, starting with a measure number 19 in a box. The staff contains a series of sixteenth notes with 'V' (vibrato) markings above some notes.

Eighth musical staff, starting with a measure number 22 in a box. The staff features a series of sixteenth notes with 'V' (vibrato) markings above some notes.

Ninth musical staff, starting with a measure number 25 in a box. The staff contains a series of sixteenth notes with 'V' (vibrato) markings above some notes.

Tenth musical staff, starting with a measure number 29 in a box. The staff continues the melodic line with eighth and sixteenth notes.

Eleventh musical staff, starting with a measure number 32 in a box. The staff concludes the piece with a final note and a fermata.