

Ouvertüre Nr. 2

Contrabbasso

zur Oper
Leonore

Ludwig van Beethoven, aus op. 72

Adagio

7 *ff* *p* *ff* *p* *dim.* *pp*

17 *cresc.* *sfp* *sempre più p*

24 *pp sempre staccato*

30 *stacc.*

33 *cresc.* *ff*

37 *ff* *sempre ff*

42 *pizz.* *p* *arco* *3* *p cresc.*

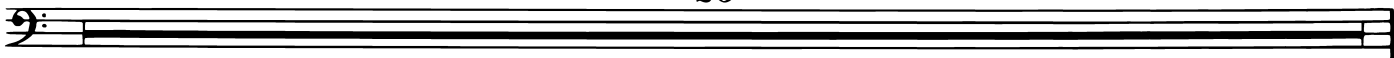
46 *pizz.* *p*

49 *arco* *3* *p* *3* *3* *3* *3* *3* *3* *3* *3* *dim.*

52 **Allegro** *pp* *pp* *pp*

58

23



81 Fl. I/II

1 2 3 4 5

p cresc. poco a poco

88 6

ff sf sf sf

94 1

ff

100 1

ff dim. p

106

112

cresc. sf sf sf sf

118

ff

125

p f p

131

f p f p f

Contrabbasso

136

sf sf sf sf p

141

147

cresc. f f p cresc.

153

ff p

160

cresc. p sfp

167

sfp cresc. sfp

174

ff

180

187

193

sf sf

200 *sf* *sf* *sf* *sf*

206 *sf* *sf* *sf più f* *fff*

212 *p cresc.* *f*

223 *ff* *p*

229 *fp* *fp* *cresc.*

235 *ff* *sf* *sf* *ff*

241 *sf* *sf* *sf* *p* *p*

247

253 *p* *sfp* *sfp*

259

265 *sfp* *sfp* *sfp*

Vc. 5

Wegen der ungünstigen Wendestelle wurde diese Seite zusätzlich als loses Blatt beigelegt.
Because of the unpractical page turn, this page has also been enclosed separately.

271 *sfp* *sfp* *sfp*

277 **1** *f pp*

284 *fp*

291 *p* *pizz.*

297 *arco* *fp*

303 *pizz.*

309

315

321

327 *arco*

333 **1**

Contrabbasso

339 1 1 1

345 *pp* *ff* *ff* 3

353 *sf* 2 *sempre ff*

360

366

372 *ff*

378

384

389 *Un poco sostenuto* *fp*

394 *Tempo I* *p* 1

Contrabbasso

400

f *p* *f* *p*

406 *Un poco sostenuto*

fp *pp sempre*

413

419

3 *Adagio* *3*

429 *Vc.*

1 *Tempo I* *7* *Va.*

441

p cresc. *fff*

447

sf *sf* *sf*

453

sf *sf* *sf* *sf*

459

465

472

ff marcato

479

486

493

499

sf *sf*

505

sf *p*

511

f *p* *f*

517

fff 1

524

1 1

Detailed description: This page contains ten staves of musical notation for the Contrabbasso. The notation is in bass clef. Measures 465-471 consist of a series of eighth notes with rests. Measure 472 begins with a series of eighth notes, followed by a dynamic marking of *ff marcato*. Measures 479-485 feature a melodic line with slurs and ties. Measure 486 continues this melodic line. Measures 493-498 show a melodic line with slurs and ties. Measures 499-504 feature a melodic line with slurs and ties, with dynamic markings of *sf* and *sf*. Measure 505 continues the melodic line, with dynamic markings of *sf* and *p*. Measures 511-516 consist of a series of eighth notes with rests, with dynamic markings of *f*, *p*, and *f*. Measure 517 features a melodic line with slurs and ties, with a dynamic marking of *fff* and a fingering '1'. Measure 524 features a melodic line with slurs and ties, with dynamic markings of '1' and '1'.