

Timpani

ДЕЙСТВИЕ ВТОРОЕ

№20. Придворный танец

132 *Andante grazioso* 133

6 3 4 mp

4 4 3 1 mp

4 1 2 Poco più tranquillo

2 1 3 mp Tempo I

7 p

Timpani

№ 36. Дуэт принца и Золушки. (Адажио)

[259] Adagio [260] Tuba rit. 1

Musical notation for measures 259 and 260. Measure 259 is marked 'Adagio' and measure 260 is marked 'Tuba rit. 1'. The notation shows a bass clef with a 9/8 time signature. Measure 259 contains a whole note G2. Measure 260 contains a whole note G2, followed by a measure rest, and then a whole note G2.

Gr. cassa 3 [261] Poco più animato Timp.

Musical notation for measures 261 and 262. Measure 261 is marked 'Poco più animato' and 'Timp.'. The notation shows a bass clef with a 6/8 time signature. Measure 261 contains a quarter note G2, a quarter note A2, and a quarter note B2. Measure 262 contains a quarter note C3, a quarter note B2, and a quarter note A2.

[262] [263] Adagio

Musical notation for measures 262 and 263. Measure 262 is marked with a dynamic 'f' and contains a whole note G2. Measure 263 is marked 'Adagio' and contains a whole note G2.

20 poco rit. a tempo

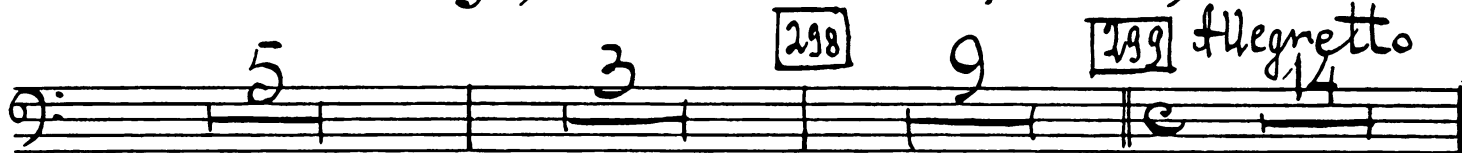
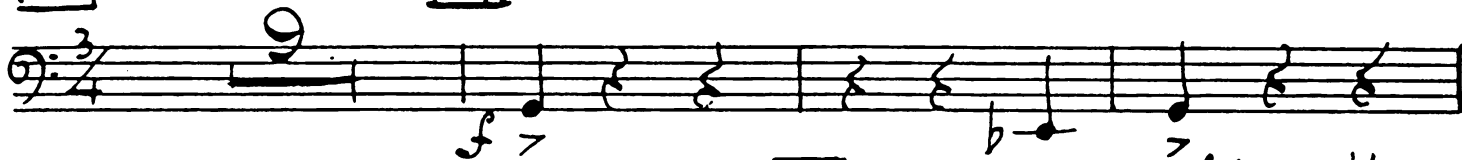
1 rit. 1 a tempo 3 rit. 2

№34. Утощение гостей — *tacet*

№41. Соблазн

[296] Moderato

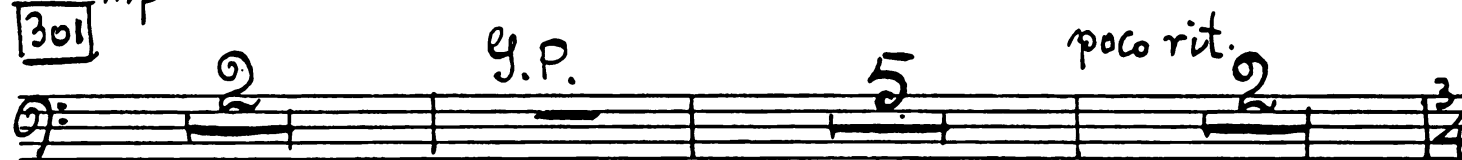
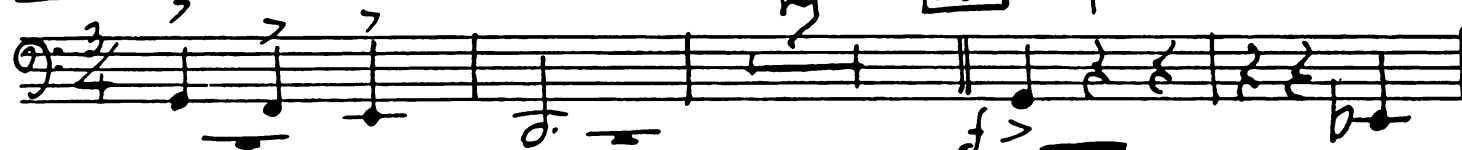
[297]



[300]



[301]

[302] Moderato I
Tuba

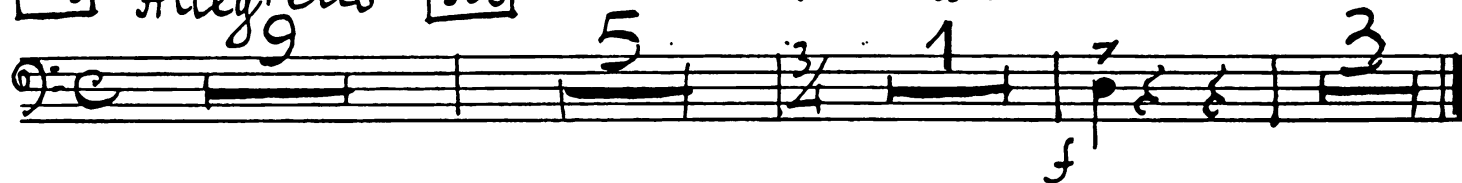
[303] Timp.



[305] Allegretto

[306]

Moderato



№ 43. Ориенталия

313 Andante dolce Poco più animato

Handwritten musical notation for measures 313 and 314. Measure 313 is in 3/4 time and contains a single note with a fermata, marked with a '12' above it. Measure 314 is in 2/4 time and contains a single note with a fermata, marked with a '1' above it.

Handwritten musical notation for measures 314 and 315. Measure 314 is in 2/4 time and contains a single note with a fermata, marked with a '2' above it. Measure 315 is in 3/4 time and contains a single note with a fermata, marked with a '1' above it.

Silofono *pp* allarg. **315** Tempo I *pp* Jump.

Handwritten musical notation for measures 315 and 316. Measure 315 is in 2/4 time and contains a melodic line starting with a 'pp' dynamic and an 'allarg.' marking. Measure 316 is in 3/4 time and contains a single note with a fermata, marked with a 'pp' dynamic and a 'Jump.' marking.

rit. 5 3

Handwritten musical notation for measures 316 and 317. Measure 316 is in 3/4 time and contains a single note with a fermata, marked with a '5' above it. Measure 317 is in 3/4 time and contains a single note with a fermata, marked with a '3' above it and a 'rit.' marking.

№ 48. Принц нашел Золушку

368 *adagio* passionato 369 poco rit. a tempo

Handwritten musical notation for measures 368 and 369. Measure 368 is in 9/8 time and contains a single note with a fermata, marked with a '6' above it. Measure 369 is in 2/4 time and contains a single note with a fermata, marked with a '2' above it.

rit. 1 370 Andante Moderato Fl. I Solo Ob. I Solo

Handwritten musical notation for measures 370 and 371. Measure 370 is in 4/4 time and contains a single note with a fermata, marked with a '1' above it. Measure 371 is in 4/4 time and contains a single note with a fermata, marked with a '2' above it.

30 371 poco rit. Andante

№ 49. Медленный вальс

372 Adagio Fag. I

373 poco più animato poco rit. 374 Tempo I

375 *f*ssai più mosso Cl. I solo *Picc.*

376 Cl. I solo *Poco più animato* *Timp.* *mf*

crec.

377

rit. 378 *Meno mosso (più animato al adagio)* *f* 379 *Adagio*

rit. 378 *Fag.* 379 *Adagio*

№ 50. Аморозо

tacet