

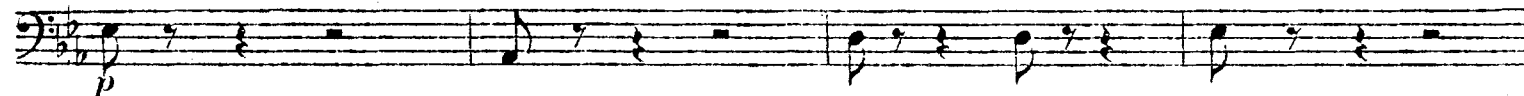
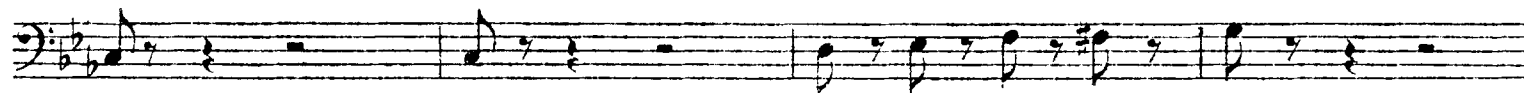
G. ROSSINI

SINFONIA

NELL'OPERA "MAOMETTO II.,,

VIOLONCELLO

Andante sostenuto



a tempo

CELLO

B

PIZZ.

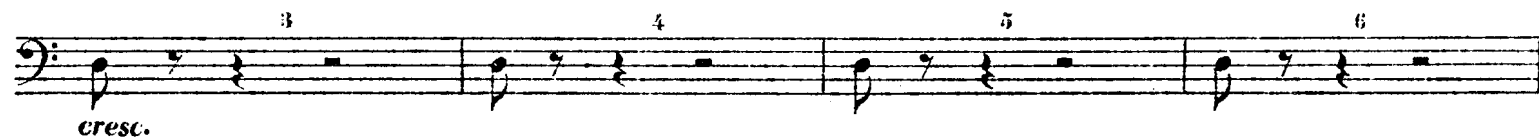
Allegro ARCO

C

ff



cresc.



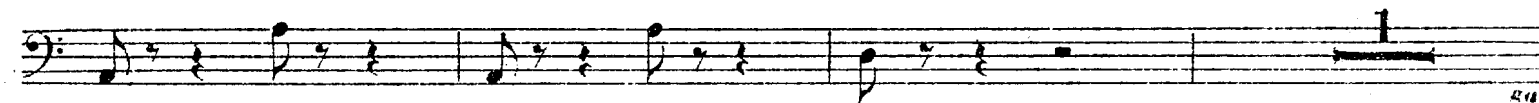
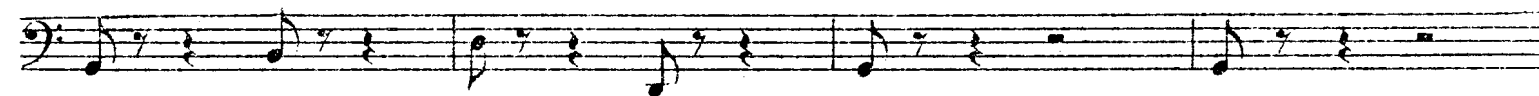
D

f *pp*

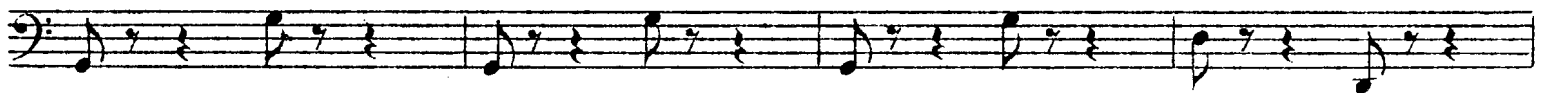
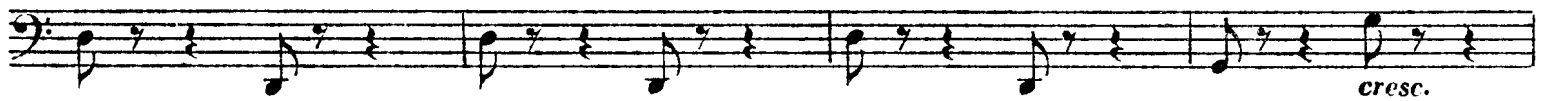
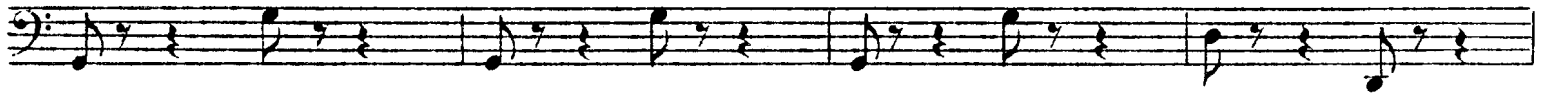
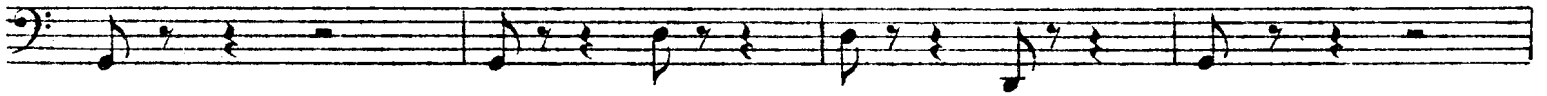


PIZZ.

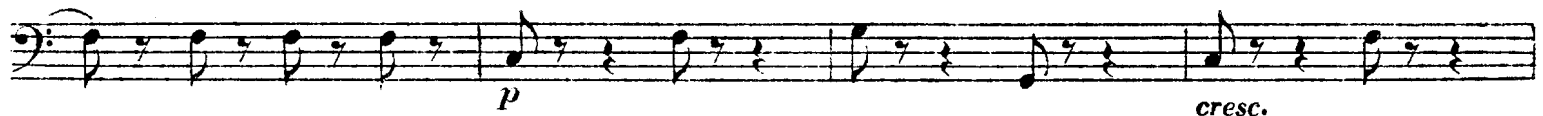
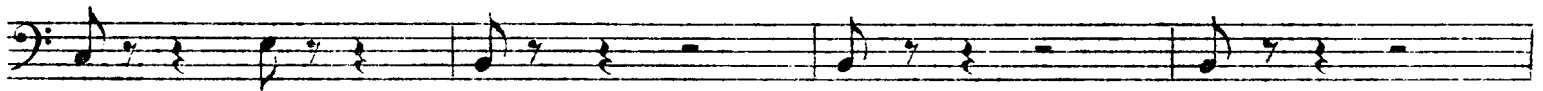
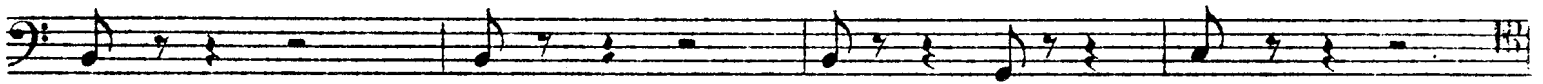
p



CELLO



CELLO



CELLO

First musical staff in bass clef, containing a melodic line with eighth and sixteenth notes.

Second musical staff in bass clef, continuing the melodic line from the first staff.

Third musical staff in bass clef, featuring five measures with fingerings 1, 2, 3, 4, and 5 indicated above the notes. Dynamics include *pp* and *cresc.*

Fourth musical staff in bass clef, starting with a sixteenth-note triplet marked with a '6' above it. Dynamics include *f* and *pp*.

Fifth musical staff in bass clef, ending with a measure marked *PIZZ.* and a first fingering '1' above the note.

Sixth musical staff in bass clef, continuing the melodic line.

Seventh musical staff in bass clef, ending with a first fingering '1' above the final note.

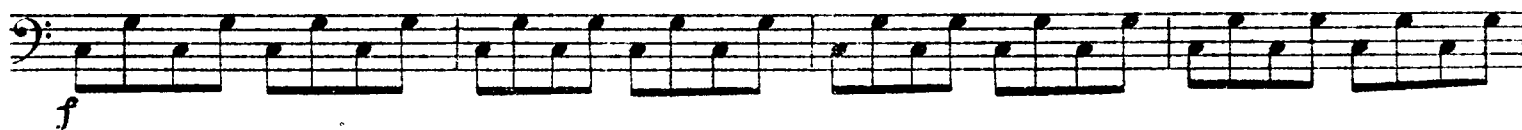
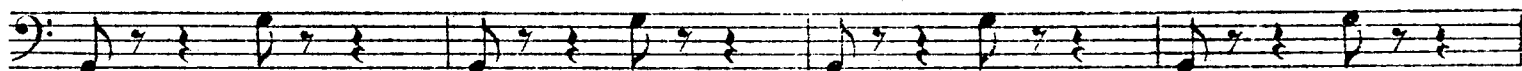
Eighth musical staff in bass clef, starting with a dynamic marking of *p*.

Ninth musical staff in bass clef, ending with a dynamic marking of *ppp*.

Tenth musical staff in bass clef, continuing the melodic line.

Eleventh musical staff in bass clef, ending with a dynamic marking of *cresc.* and a double bar line.

CELLO



Tutta forza



Più mosso



pp

cresc.



ff