

Violoncello

Ouverture Nr. 2

zur Oper
Leonore

Ludwig van Beethoven op. 72

Adagio

7

14

20

28

31

35

39

ff *p* *ff* *p* *dim.* *pp*

cresc. *fp* *fp*

sempre più p

3

PP *sempre staccato*

3 *cresc.*

stacc. *ff* *ff*

sempre ff *pizz.* *p*

45 *arco* 3 *p cresc.* 3 3 3 3 3 *pizz.* *p*

49 *arco* 3 *p* 3 3 3 3 3 3 *dim.*

53 *pp* *pp* *pp* **Allegro**

60

66 1 2 3 4 *cresc. poco a poco*

73 5 6 7 8 9 10 11

80 12 13 14 15 16 17 18

87 19 20 *ff sf sf sf*

94 *ff*

100 *ff dim. p*

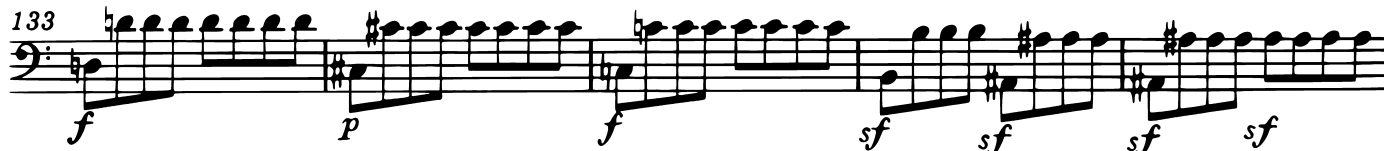
105 *sf*

110  *cresc.*

116  *sf sf sf sf ff*

122 

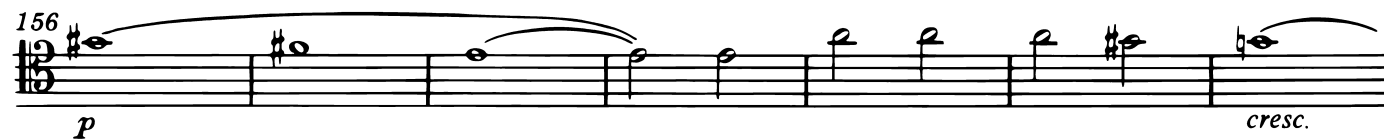
128  *p f p f p*

133  *f p f sf sf sf sf*

138  *p*

144  *cresc.*

150  *fp f p cresc. ff*

156  *p cresc.*

163  *p*

170  *cresc. ff*

Wegen der ungünstigen Wendestelle wurde diese Seite zusätzlich als loses Blatt beigelegt.
Because of the unpractical page turn, this page has also been enclosed separately.

176

182

188

sf

194

sf

200

sf sf sf sf

206

sf sf sf piu f fff

212

p dim.

219

pp cresc. f

226

ff p cresc. fp cresc. fp

232

cresc. ff sf

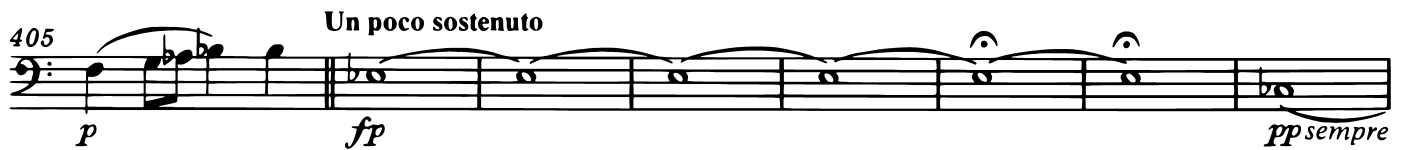
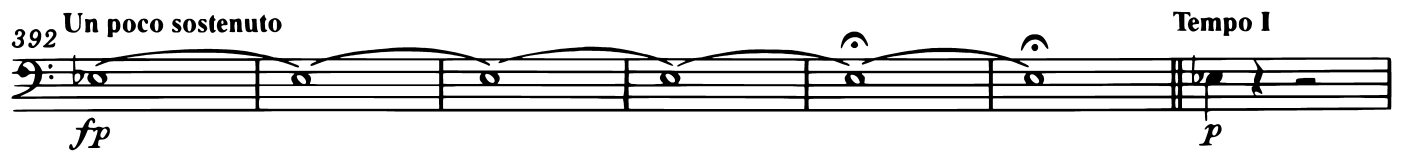
238

sf ff sf sf sf p

245

p

253



460

466

472

478

ff marcato

485

492

499

sf *sf*

505

sf *p*

511

f *p* *f*

517

fff

524