

Quintette pour Piano

et

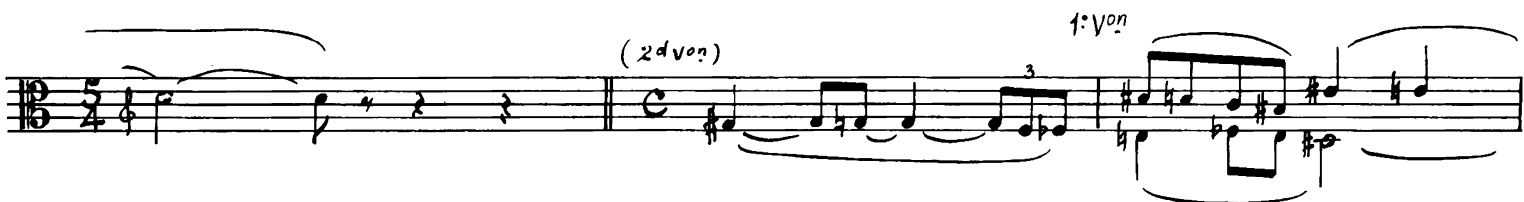
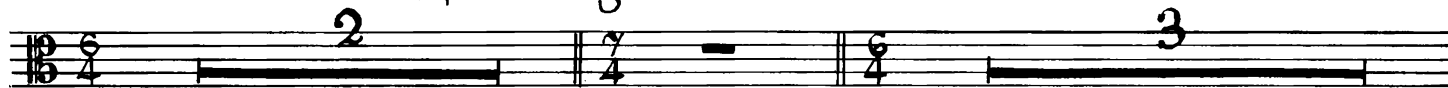
Instruments à Cordes

ALTO

I

Ch. KOECHLIN

Andante très calme, quasi Adagio.



2 *con sord.*

ppp *senza cresc.*

ppp

sans presser, et presque sans cresc.

pp **3** p

pp *dim. poco a poco*

smorz. *piùpp*

espressivo pp

4 *de très loin, mais toujours esspress. (d=d)*

smorz. pppp *ppp très égal, sans presser et sans cresc.*

pp poco cresc.

p mp sost. dim. poco a poco

5

pp dolciss. dim. sempre smorz.

ppp cresc. mf

6 un peu pesant

mp pp pp

pno smorz

7

Vc.

Vc. *ppp* *pp cresc. poco a poco*

f *p sub.* *molto*

ff

8 *ff* *encore très soutenu* *dim. poco a poco* *pp*

9 *ppp* *mais très expressif*

poco *mp*

10 (♩=♩) *p* *pp* *toujours expressif* *sempre pp*

ppp

Vc. *clld*

II

All^o con moto (sourd, agité, très rythmé, mais de loin au début)

con sord. ³ ³ ² ^{2^{de} V^{on}}

ppp sec

[1] ^{v^{on}s}

pp ppp

^{pizz.} ³ ³

mp pp sempre pp mp

arco [2]

p molto mf sf p sub. e dim.

[3]

p ff sub. mf f p sub. e dim. mp pp

mf p pp

[4] Stesso t^o (d.:d.) ^{tr. b} ^{1^{re} V^{on} senza sord.}

ppp pp p mp

pizz. arco ³ ³ ³

Stesso t^o (d.:d.)

mp mf mp f

[5] ³ ³ ³ mettez la sourd.

mp sub. mf

pno *con sord.*

pp *mp* *f* *molto* *p*

P legg. *senza sord.*

pp

mp

Stesso t? (d. = d)

mp *molto* *f*

ff *f* *mf*

mf *f*

Largement

f *ff* *f (tout l'archet)*

ff *sempre ff*

ff sec *dim. poco a poco*

ff sec *dim. poco a poco*

Musical staff with notes and dynamic markings. The staff contains a series of eighth notes with slurs. There are four '2' markings below the staff, indicating doublets. A horizontal line is drawn below the staff.

Musical staff with notes and dynamic markings. The staff contains a series of eighth notes with slurs. There are two '2' markings below the staff. The dynamic marking *pp* is written below the staff, and *smorz.* is written to the right.

10

Musical staff with notes and dynamic markings. The staff contains a series of eighth notes with slurs. There are four '2' markings below the staff. The dynamic markings *mf sub.* and *f sub.* are written below the staff.

11 A peine ralenti
pno mettez la sourd.

Musical staff with notes and dynamic markings. The staff contains a series of eighth notes with slurs. There are two '2' markings below the staff. The dynamic marking *pp* is written below the staff.

Con sord.
pizz.

Musical staff with notes and dynamic markings. The staff contains a series of eighth notes with slurs. The dynamic marking *ppp* is written below the staff.

(con sord.)
arco

2^d Ven

Musical staff with notes and dynamic markings. The staff contains a series of eighth notes with slurs. The dynamic marking *ppp* is written below the staff.

12

Musical staff with notes and dynamic markings. The staff contains a series of eighth notes with slurs. There is a '3' marking below the staff. The dynamic marking *pno* is written above the staff.

Musical staff with notes and dynamic markings. The staff contains a series of eighth notes with slurs. The dynamic marking *pp* is written below the staff.

otez la sourd. pno

Musical staff with notes and dynamic markings. The staff contains a series of eighth notes with slurs. The dynamic marking *ppp* is written below the staff.

13 (♩. = ♩.)

ppp
pno
ppp slacc.
8va

pp
pp cresc.

mf
cresc. sempre
mf

pizz. arco
f ff f ff

pizz. arco
f ff f ff

2
Toujours très soutenu

ff
mf cresc.

ff
ff

fff
fff

18 *tr h m*

sempre dim. *mf*

cresc.

19 (*♩ = ♩.*) *2^d von*

mp *f*

mp cresc.

ff

20

ff

ff sempre *mp*

mf *mp*

f *ff*

environ 3 mesures 21 *Toujours très animé*

p^{no}

pp *pp legg.*

pp *ppp* *sotto voce*

mp *mf*

pp sub. *mf* *f*

f *ff* *mf cresc.*

ff *f*

ff *sempre ff*

Stesso t^o (d. = d.)

f *ff*

25 Stesso t^o (d. = d.)

mf non troppo

ff

Musical staff with notes and dynamics. The dynamic marking *ff* is present.

Musical staff with notes and dynamics. The dynamic marking *ff* is present.

Musical staff with notes and dynamics. The dynamic marking *ff* is present. A box containing the number 26 is located above the staff.

Musical staff with notes and dynamics. The dynamic marking *ff* is present. A box containing the number 27 is located above the staff. The text "Ici un peu retenu (d = d.)" is written above the staff.

Musical staff with notes and dynamics. The dynamic marking *ff* is present.

Musical staff with notes and dynamics. The dynamic marking *ff* is present. A finger number 5 is indicated above the staff.

Musical staff with notes and dynamics. The dynamic marking *ff* is present. A box containing the number 28 is located above the staff. Finger numbers 5 and 5 are indicated below the staff.

Musical staff with notes and dynamics. The dynamic marking *ff* is present. The text "très loud" is written above the staff. The text "un peu élargi" is written below the staff.

Musical staff with notes and dynamics. The dynamic marking *fff* is present. A box containing the number 29 is located above the staff. The dynamic marking *pno* is present.

Musical staff with notes and dynamics. The dynamic marking *fff* is present. The text "Large" is written above the staff. A box containing the number 30 is located above the staff. The text "fff sempre" is written below the staff.

la d assez lente

mettez la sourd.

pno

(à 3/4)

pno

31 (♩ = ♩) Con sord.

pppp très égal et absolument sans expression

32 Solo

pp *sempre pp*

pppp

33

Rall. poco a poco

34 Plus lent sempre Rall.

pno

ppp

smorz.

III

Andante (très calme et très doux)

(*sourd.*) *long* Rall.

ppp *ppp* sempre

pno

a T?

pp *dolciss.*

pno

pno

f von

V.S.

Rall. 1 a T^o tranquillo

pp
très éteint
pno
ppp

dolciss.
pp sempre ppp
un peu en dehors

dim.
3
dolciss.

pno loco
smorz.

3 très calme, avec une grande sérénité

pp

(♩ = ♩) sempre dolciss.
Plus calme
dolciss.

4

1. Viol
dolciss.
ppp
poco cresc.

en serrant

pno
sost.
mp un peu en dehors
1. Viol

5

mp
sost.
1. Viol

p espress.
cresc. poco
(♩ = ♩)

mp
mf
dim. molto
p

Vc.
V. S.
pno

6

Stesso 1º (♩. = ♩)

1. viol.

senza sord.

pizz.

Vc.

7 arco

poco a poco cresc.

mp

2

8

très soutenu

9 Assez large (♩. = ♩.)

mettre la sourdine con sord.

10

(♩ = ♩) Rit.

ôtez vite la sourdine

11

sans dureté

smorz.

12 Très tranquille

pp dolce.

dolce. *pp de la pointe* *ppp*

13

pno

ppp *p bien chanté* *mf*

14

Allarg. *mp* *mf* *f*

15

p *mettez la sourd.*

(double c.)

pp

très éteint

8^a

Rall. Harm.

pp

Vc.

IV

Allegro Moderato

pno

1

2

(8^a)

3 Un peu plus lent que (♩ = ♩)
Molto tranquillo (à la blanche)

Vc.

pp bien tranquille

poco cresc.

dolciss.

pp dolciss.

assez long

p

pp

2^e Violon

4

5 a T^o I^o
p^{no}

6 Molto tranquillo

Vc.

pp

poco a poco cresc.

mp

pp

3

3

2^e Violon

7 Allegro

con sord.

pp

1. Viol

8

cort

9

1. Viol

p

10

2. Viol

pp
p
pno
mp

11 pizz.

p
1. Voa
2. Voa

arco
pizz.
mp
pno

12

arco
pizz.
mf
p
pp
1. Voa pizz.
2

13

mp

14

mf
ff
vc.

80112

15

pizz.
p sost. *mf*
v.
2

16

arco
mf *f* *f*
vc.
2 *2*

17

ff *ff*
2 *2*

18 Molto tranquillo

pp *ppp*
vc.

Poco Allarg.

19 a T^o

pp *poco*
vc.
3

Très tranquille

Musical notation for the first system, featuring a treble clef and a key signature of three sharps (F#, C#, G#). The music begins with a piano (*p*) dynamic and includes markings for mezzo-piano (*mp*) and piano (*p*). A slur covers the first two measures.

20 sempre (♩ = ♩)

Musical notation for the second system, starting with measure 20. It includes a piano (*p*) dynamic, a piano (*p^{no}*) dynamic, and markings for piano-piano (*pp*). Triplet markings (*3*) are present over several notes.

Musical notation for the third system, featuring a sostenuto (*sost.*) marking, a piano-piano (*pp*) dynamic, and a piano (*p^{no}*) dynamic. It includes a *legg.* (leggiero) marking and a *poco* marking with a slur.

Musical notation for the fourth system, featuring a sostenuto (*sost.*) marking and a *cresc. poco a poco* (crescendo poco a poco) marking.

21

Rall.

Musical notation for the fifth system, starting with measure 21. It includes a piano (*p*) dynamic, a piano (*p^{no}*) dynamic, and a forte (*f*) dynamic. A *Rall.* (rallentando) marking is present at the end of the system.

assez long

22

All^o Mod^o

mettez la sourd.

Musical notation for the sixth system, starting with measure 22. It includes a piano-piano (*pp*) dynamic and a *mettez la sourd.* (mute) instruction. The music is marked *All^o Mod^o*.

con sord.

23

24

arco

f *ff*

25

f non troppo

pno

26 Solo moins vite

ff *p*

1^{on} pizz

27

pizz.

mf

arco

mp *mf*

28 3 doubles croches pour une croche pointée au mouvt précédent

p

29

2^{on}

p

Vc.

mf sost. 8^a
 Un peu (à peine) retenu *ff*

30 *f* 8^a

31 Animé et solide (♩ = ♩.)
f très soutenu *ff* *f* *ff*

32

33

Allarg. poco **34** (♩ = celle du début du morceau)
3

très soutenu

All.

36 *Con moto*

37

38 *Con fuoco*