

Composed for the Imperial College of Science and Technology, London, 1949

An Invocation to Science

for Voices in Unison, or in three parts*

Words from WILLIAM WORDSWORTH

MUSIC BY

GEORGE DYSON

London: NOVELLO & COMPANY, Limited

VOICES

I

II, III
(ad lib.)

PIANO

Risoluto *mf*

Sci-ence shall be a

Risoluto $\text{♩} = 60$ *f* *mf*

pre-cious vi-si-tant; For her heart shall kin-dle; Her dull

mp

eye no more shall hang Chained to its ob-ject in brute sla-ve-ry;

f

*Or mixed voices in six parts. The accompaniment is arranged for String Orchestra, complete in itself with or without the Piano, and there are optional parts for two trumpets, three trombones and drums. Full score and parts can be hired from the publishers. Time of performance about five minutes.

But taught with pa-tient in-ter-est

to watch The pro-cess-es of things, and serve the cause Of or-der

and dis-tinct-ness, not for this,

not for this Shall it for - get — that its most no - ble use, Its

mf

mf

Detailed description: This system contains the first two staves of music. The top staff is a vocal line in treble clef with a key signature of one sharp (F#) and a 4/4 time signature. It features a triplet of eighth notes marked *mf*. The bottom staff is a piano accompaniment in treble and bass clefs, also in F# major and 4/4 time, with *mf* dynamics. The lyrics are: "not for this Shall it for - get — that its most no - ble use, Its".

most il - lus - trious pro - vince, must be found In fur - nish - ing clear

Detailed description: This system contains the next two staves of music. The vocal line continues with the lyrics: "most il - lus - trious pro - vince, must be found In fur - nish - ing clear". The piano accompaniment provides harmonic support with chords and moving lines in both hands.

guid - ance, a sup - port Not trea - cher - ous, to the mind's — ex -

mp

mp

Detailed description: This system contains the final two staves of music on the page. The vocal line concludes with the lyrics: "guid - ance, a sup - port Not trea - cher - ous, to the mind's — ex -". The piano accompaniment features a *mp* dynamic. The system ends with a fermata over the final notes.

- cur - sive power, to the minds ex - cur - sive

mf *f* *mf* *f*

power.

ff *f*

mp *p* *pp*

Andante ♩ = 90
 SOLO (or a few voices)
mp espress.

So build we up the Be - ing — that we are; Thus deep - ly

p espress.

drink - ing in _____ the soul of things We shall be wise per - force;

and while in - spired By choice, and _____ con - scious _____ that the

poco a poco cresc.

poco a poco cresc.

Will _____ is free, and _____ con - scious _____ that the Will _____ is

free, Shall _____ move _____ un - swerv - ing, Shall _____ move _____ un -

mf

- swerv - ing a - long the path Of or - der _____ and of good.

rit.

marcato

mf

FULL

mf

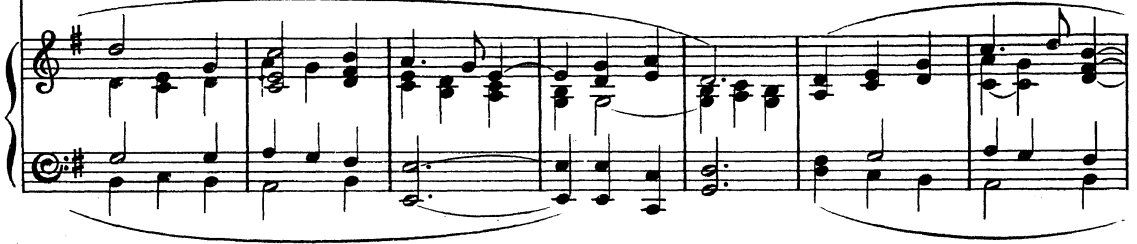


So build we up the Be - ing — that we are; Thus deep - ly drink - ing in —

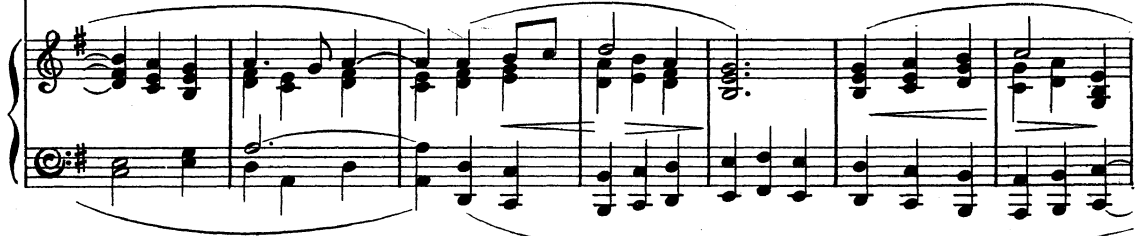
II. III



mf



the soul of things We shall be wise per - force; and while in - spired By



choice, and — con - scious — that the Will — is free; and —



poco a poco cresc.



poco a poco cresc.

con - scious that the Will is free, Shall move un-swer-ving,

This system contains the first two lines of music. The top line is the vocal melody, and the bottom line is the piano accompaniment. The lyrics are: "con - scious that the Will is free, Shall move un-swer-ving,". The piano part features chords and a bass line with some accents.

Shall move un-swer-ving, as if im-pelled By strict ne-

mp

mp

mp marcato sempre

This system contains the second two lines of music. The top line is the vocal melody, and the bottom line is the piano accompaniment. The lyrics are: "Shall move un-swer-ving, as if im-pelled By strict ne-". The piano part includes dynamic markings: *mp* above the vocal line, *mp* below the piano line, and *mp marcato sempre* below the piano line.

- cess - i - ty, as if im - pelled By strict ne - cess - i - ty, a - long the

mf

mf

This system contains the final two lines of music. The top line is the vocal melody, and the bottom line is the piano accompaniment. The lyrics are: "- cess - i - ty, as if im - pelled By strict ne - cess - i - ty, a - long the". The piano part includes dynamic markings: *mf* above the vocal line and *mf* below the piano line.

poco a poco allargando

sempre cresc.

path— Of or - der, the path— of or - der, —

sempre cresc.

poco a poco allargando

f

f

or - der and — of good, —

f

più f

molto largamente

f *ff*

or - der — and good. —

f *ff*

molto largamente

ff