

Missa in C

(Dominicus-Messe)

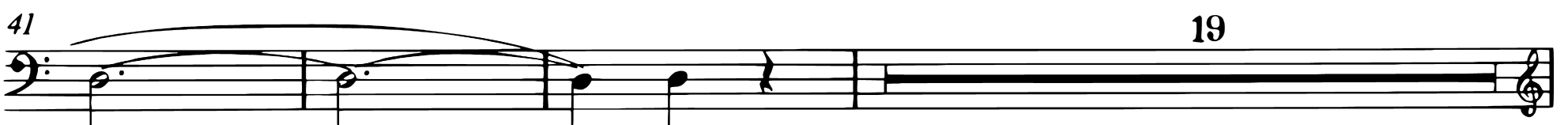
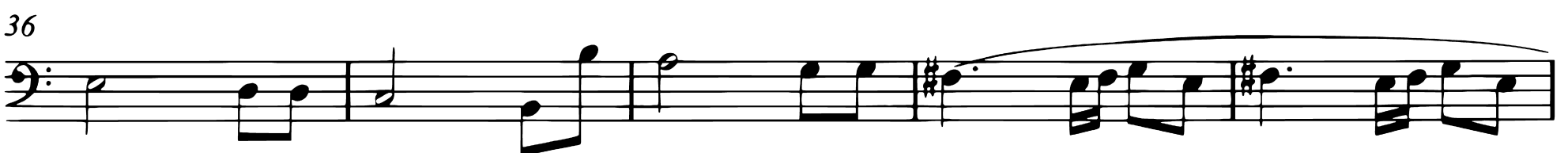
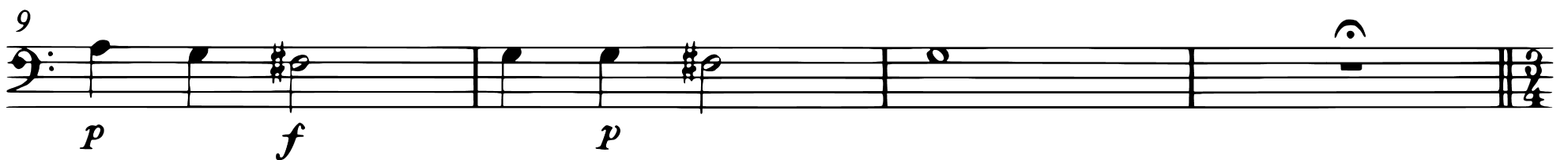
für Soli, Chor, Orchester und Orgel

Posaune III ad lib.

Wolfgang Amadeus Mozart KV 66
herausgegeben von Ulrich Haverkamp
und Frank Reinisch

Kyrie

Adagio



Posaune III

63 VI.I

69

75

81

86 13 Ob./VI. *f*

102

Gloria

Allegro moderato

f

5

11

16 **Andante grazioso** 75 VI. I *f*

93 **Adagio** *f*

97 **Allegro**

101 **Un poco andante** 75

180 **Un poco adagio** 4 VI. I *f*

186 *p f p f p*

191 *f*

195 *p f p f p f*

200

205

Andante ma un poco allegro

209 17 18

246 48 13 VI.I tr

310

315

320

325

330

336

342 3

349

354

360

366

373

380

386

391

397

403

408

415

Credo

Molto allegro

f

6

12

p *f*

18

24

30

36

42

48

54

4

3/4

Posaune III

62 **Adagio** 55 VI.

119 **Adagio**

123

127

133 **Molto allegro**

139

146

151

157

163

169

Posaune III

174 **Andante** 73 VI.I tr

249 **Moderato** *f*

253

258

262 **Adagio**

267 **Allegro** 15

285 Pos. II

290

295

Measures 295-300: A musical staff in bass clef. Measure 295 starts with a quarter note G2, followed by quarter notes A2, B2, and C3. Measure 296 has quarter notes D3, E3, and F3. Measure 297 has quarter notes G3, A3, and B3. Measure 298 has quarter notes C4, D4, and E4. Measure 299 has quarter notes F4, G4, and A4. Measure 300 has a half note B4.

301

Measures 301-306: A musical staff in bass clef. Measure 301 has a quarter note G2, followed by quarter notes A2, B2, and C3. Measure 302 has quarter notes D3, E3, and F3. Measure 303 has quarter notes G3, A3, and B3. Measure 304 has quarter notes C4, D4, and E4. Measure 305 has quarter notes F4, G4, and A4. Measure 306 has a half note B4.

307

Measures 307-311: A musical staff in bass clef. Measure 307 has a quarter note G2, followed by quarter notes A2, B2, and C3. Measure 308 has quarter notes D3, E3, and F3. Measure 309 has quarter notes G3, A3, and B3. Measure 310 has quarter notes C4, D4, and E4. Measure 311 has a half note F4.

312

Measures 312-324: A musical staff in bass clef. Measure 312 has a quarter note G2, followed by quarter notes A2, B2, and C3. Measure 313 has a quarter note D3, followed by a whole rest. Measure 314 has a quarter note E3, followed by a whole rest. Measure 315 has a quarter note F3, followed by a whole rest. Measure 316 has a quarter note G3, followed by a whole rest. Measure 317 has a quarter note A3, followed by a whole rest. Measure 318 has a quarter note B3, followed by a whole rest. Measure 319 has a quarter note C4, followed by a whole rest. Measure 320 has a quarter note D4, followed by a whole rest. Measure 321 has a quarter note E4, followed by a whole rest. Measure 322 has a quarter note F4, followed by a whole rest. Measure 323 has a quarter note G4, followed by a whole rest. Measure 324 has a quarter note A4, followed by a whole rest.

325

Measures 325-330: A musical staff in bass clef. Measure 325 has a quarter note G2, followed by quarter notes A2, B2, and C3. Measure 326 has quarter notes D3, E3, and F3. Measure 327 has quarter notes G3, A3, and B3. Measure 328 has quarter notes C4, D4, and E4. Measure 329 has quarter notes F4, G4, and A4. Measure 330 has a half note B4.

331

Measures 331-337: A musical staff in bass clef. Measure 331 has a quarter note G2, followed by quarter notes A2, B2, and C3. Measure 332 has quarter notes D3, E3, and F3. Measure 333 has quarter notes G3, A3, and B3. Measure 334 has quarter notes C4, D4, and E4. Measure 335 has quarter notes F4, G4, and A4. Measure 336 has a half note B4. Measure 337 has a half note C5.

338

Measures 338-343: A musical staff in bass clef. Measure 338 has a quarter note G2, followed by quarter notes A2, B2, and C3. Measure 339 has quarter notes D3, E3, and F3. Measure 340 has quarter notes G3, A3, and B3. Measure 341 has quarter notes C4, D4, and E4. Measure 342 has quarter notes F4, G4, and A4. Measure 343 has a half note B4.

344

Measures 344-349: A musical staff in bass clef. Measure 344 has a quarter note G2, followed by quarter notes A2, B2, and C3. Measure 345 has quarter notes D3, E3, and F3. Measure 346 has quarter notes G3, A3, and B3. Measure 347 has quarter notes C4, D4, and E4. Measure 348 has quarter notes F4, G4, and A4. Measure 349 has a half note B4.

350

Measures 350-355: A musical staff in bass clef. Measure 350 has a quarter note G2, followed by quarter notes A2, B2, and C3. Measure 351 has quarter notes D3, E3, and F3. Measure 352 has quarter notes G3, A3, and B3. Measure 353 has quarter notes C4, D4, and E4. Measure 354 has quarter notes F4, G4, and A4. Measure 355 has a half note B4.

Sanctus

Adagio

f

5

Allegro

f

10

f

17

f

27

f

32

f

38 Allegro

43

47

p *f*

Benedictus

Allegro moderato 25

VI.I *p* *f*

30

34

38

p *f*

Detailed description: This block contains the first system of the Benedictus section, starting at measure 25. It features a bass clef and a common time signature. The music begins with a whole rest for 25 measures, followed by a fermata. At measure 27, a second staff is introduced for VI.I (Violin I), starting with a piano (*p*) dynamic and a trill. The main bass line continues with various rhythmic patterns, including eighth and sixteenth notes, and rests. Dynamics range from piano (*p*) to forte (*f*). Measure numbers 30, 34, and 38 are indicated at the start of their respective lines.

Agnus Dei

Allegro moderato 10

VI.I *p* *f*

14

19

30

35

40

p *f*

Allegro 4

Detailed description: This block contains the first system of the Agnus Dei section, starting at measure 10. It features a bass clef and a common time signature. The music begins with a whole rest for 10 measures, followed by a fermata. At measure 12, a second staff is introduced for VI.I (Violin I), starting with a piano (*p*) dynamic and a trill. The main bass line continues with various rhythmic patterns, including eighth and sixteenth notes, and rests. Dynamics range from piano (*p*) to forte (*f*). Measure numbers 14, 19, 30, 35, and 40 are indicated at the start of their respective lines. The section concludes at measure 40 with a double bar line and a change to a 3/8 time signature, followed by a whole rest for 4 measures under the tempo marking **Allegro**.

48

4

57

63

3

71

4

P

80

86

4

95

4

104

f

111

117

123

129