

SONATINE FÜR BLÄSER

(Erste Sonatine)

RICHARD STRAUSS

Corno 2 in Fa

I.

Allegro Moderato

5

mf *cresc.*

① *f*

② *f*

③ *ff*

④

⑤ *dim.*

⑥ *mf* *f*

dim. *mf*

Corno 2 in Fa

Musical score for Corno 2 in Fa, measures 7-16. The score is written in treble clef with a key signature of one flat (B-flat). It includes various dynamics such as *f*, *fp*, *mf*, *p*, *dim.*, and *cresc.*. Measure numbers 7 through 16 are circled. Fingerings are indicated by numbers 1-5. There are also markings for *Cor. 1* and *3* in measures 12 and 13. The notation includes eighth notes, quarter notes, and slurs.

Musical score for Corno 2 in Fa, measures 17-27. The score is written on a single staff in treble clef. Measure 17 begins with a fortissimo (*ff*) dynamic and a slur over the first two notes, followed by a piano (*p*) dynamic. Measure 18 contains a slur over the first two notes and a fermata over the last note. Measure 19 features a slur over the first two notes and a fermata over the last note. Measure 20 has a slur over the first two notes and a fermata over the last note. Measure 21 starts with a piano (*p*) dynamic and a slur over the first two notes, with a 'Cor. 1' marking above the first note. Measure 22 is marked 'a tempo' and contains a slur over the first two notes and a fermata over the last note. Measure 23 begins with a pianissimo (*pp*) dynamic and a slur over the first two notes, with a 'cresc.' marking below the first note. Measure 24 starts with a mezzo-forte (*mf*) dynamic and a slur over the first two notes, with a 'cresc. f' marking below the first note. Measure 25 begins with a piano (*p*) dynamic and a slur over the first two notes. Measure 26 contains a slur over the first two notes and a fermata over the last note. Measure 27 starts with a pianissimo (*pp*) dynamic and a slur over the first two notes, with a 'p' dynamic marking below the first note.

Corno 2 in Fa

28 *mf* *f*

29 *cresc.* *ff*

30 3 4

Poco più tranquillo

mf dim.

31 *p*

32 Cor. 1 7

33 7

Calando

Ob. 1 3 3

p *pp*

II. Romanze und Menuett

Andante

5 4

Poco sosten. *p* a tempo

mf *dim.* ① 3 ② *p*

cresc. *f* *fp* *cresc.*

Poco calando a tempo

f *dim.* *p* ③ ④

Cor.1 ⑤ *pp*

⑥ *cresc.* *f* ⑦

sfz *sfz* *dim.* *p*

Poco calando Tempo di Menuetto

dim. *pp* ⑧

Corno 2 in Fa

8

Cor.1



9

Grazioso



10



11

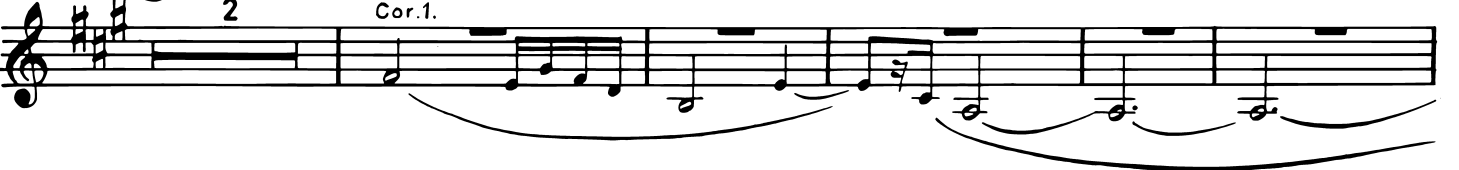


12

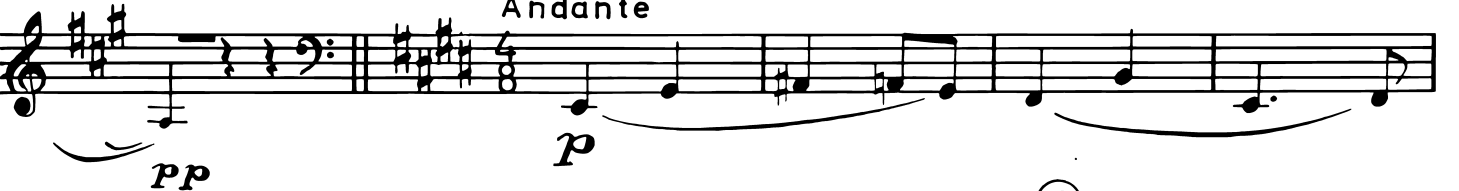
2

Cor.1.

Poco calando



Andante



13



Musical score for Corno 2 in Fa, measures 14-19. The score is written in treble clef with a key signature of three sharps (F#, C#, G#). Measure 14 begins with a circled number 14. The music features a melodic line with various dynamics: *cresc.* (crescendo) in measure 14, *f* (forte) in measure 15, *sfz* (sforzando) in measure 16, *p* (piano) in measure 17, and *pp* (pianissimo) in measure 18. A *dim.* (diminuendo) marking is present in measures 15 and 17. The tempo marking *tranquillo* is placed above measure 18. A fermata is shown in measure 18, with a circled number 5 below it. The piece concludes in measure 19 with a *pp* dynamic.

III. Finale

Musical score for III. Finale, measures 1-16. The tempo is marked *Molto Allegro*. The score is in 3/4 time and treble clef. It begins with a *p* (piano) dynamic. Measure 1 has a circled number 1. Measure 16 has a circled number 16. The score includes three first endings, marked with circled numbers 1, 2, and 3. The first ending (1) is in measure 1, the second (2) is in measure 16, and the third (3) is in measure 16. The second ending (2) is labeled *Cor. 1*. The piece concludes in measure 16 with a *p* dynamic. A *cresc.* (crescendo) marking is shown at the bottom of the page, with a dashed line leading to a *f* (forte) dynamic in the final measure.

Corno 2 in Fa

4

musical staff with notes and dynamics: *cresc.* (indicated by a dashed line) and *ff*

musical staff with notes and slurs

musical staff with notes and slurs

5

musical staff with notes and dynamics: *ff*

musical staff with notes and slurs

Calando

musical staff with notes and dynamics: *dim.* (indicated by a dashed line)

6 Meno mosso

musical staff with notes and dynamics: *pp* and *p*

7 Ob.1

musical staff with notes and dynamics: *p*

8

Cor. 1

musical staff with notes and dynamics: *p* and *p*

⑨

cresc. - - - - - mf

p

⑩

pp

p *cresc. - - - - - f*

⑪ Tempo primo (grazioso) ⑫

p Cor.1

p

Cor. 1

⑬

ff

Corno 2 in Fa

p 11

Cor. 1 2 *Calando* ⑭ *Poco tranquillo* 6

Cor. 1 *p*

⑮ *mf*

dim. - - - - - *p*

p ⑯

cresc. - - - - - *f*

dim. - - - - -

p *mf*

p 2

2

mf 17 18 5 Cor. 3

dim.

p 2

19 1

3 *p*

4 20 1 *p*

21 8 2 *f*

4 22 1 *ff* *ff*

4 1 4 *p* Poco calando

Corno 2 in Fa

23 *pp* *ff* *Tempo primo* 1

24 5 *fp*

mf *p* *cresc.* *fp* 25

mf *p* *cresc.* *fp*

mf *cresc.* 26

fp *f* *fp*

4 *f* 27 *ff* *ff*

ff

7 (28) *f*

Poco calando Piu tranquillo Flt. 1 6 *dim.*

(29) *mf*

p dim.

poco piu comodo (30) (31) (32) Ancora un poco più tranquillo 16 23 18 *pp*

Presto Cor. 1 (33) (34) 10 16 4 *p*

Cor. 1 *p* *p*

(35) Cor. 3 8 2 3

3 1 7 *f*

Corno 2 in Fa

Flt. 1

36

f

4

p *cresc.*

37

4

p *cresc.*

4

p *cresc.* *f* *dim.*

38

1

p *cresc.* *f*

Cor. 1

8

dim. *p*

39

f *dim.*

p *f*

dim. *p*

40

3

fp *p*

Musical staff with treble clef, key signature of one flat, and 3/4 time signature. It features a triplet of eighth notes, followed by a quarter note, and another triplet of eighth notes. The dynamic marking *fp* is present below the staff.

41

Musical staff with treble clef, key signature of one flat, and 3/4 time signature. It contains a series of dotted quarter notes, with a dynamic marking of *ff* at the beginning.

Musical staff with treble clef, key signature of one flat, and 3/4 time signature. It features a series of dotted quarter notes under a long slur. The dynamic marking *dim...* is at the end of the staff.

42

Musical staff with treble clef, key signature of one flat, and 3/4 time signature. It contains a series of dotted quarter notes. The dynamic marking *p* is below the staff, and *ff* is below a later measure.

Musical staff with treble clef, key signature of one flat, and 3/4 time signature. It features a series of dotted quarter notes.

Musical staff with treble clef, key signature of one flat, and 3/4 time signature. It contains a series of dotted quarter notes. The dynamic marking *ff* is at the beginning, and a '4' is written above the final measure.

43

Musical staff with treble clef, key signature of one flat, and 3/4 time signature. It features a series of dotted quarter notes. The dynamic marking *p* is below the staff. Above the staff, 'Cor. 1' is written with accents (>) over several notes. A '4' is written above the first measure.

Musical staff with treble clef, key signature of one flat, and 3/4 time signature. It contains a series of dotted quarter notes. The dynamic marking *p* is below the staff, and *cresc. - -* is at the end. A '3' is written above the final measure.

44

Musical staff with treble clef, key signature of one flat, and 3/4 time signature. It features a series of dotted quarter notes. The dynamic marking *fp* is at the beginning, and a '3' is written above the final measure.

Corno 2 in Fa

sf *mf* *cresc.*

(45)

f *dim.* *p*

cresc. *f*

(46)

(47)

f *f* *sfz*

f *fp* *cresc.* *fp* *cresc.*

f

cresc. *ff* **FINE**