

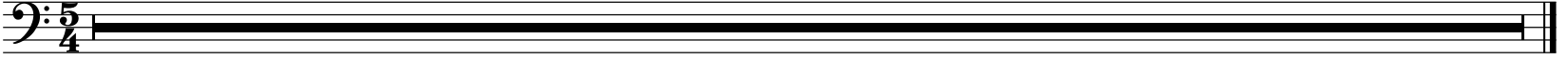
Timbales

Vetrata Di Chiesa
4 Impresiones para Orquesta
1. La Fuga in Egitto

Ottorino Respighi

Molto Lento

TACET



Timpani

II. San Michele Arcangelo

5 Allegro impetuoso 8 6 20 7 *tr* *fff* *dim.*

36 4 8 Più Vivo 24 2 9 20 10 4 11 *ff*

102 11 *p*

110 *cresc.* *cresc.*

117 *tr* 12 Tempo I 10 4 *ff* *fff* 3

139 13 2 *tr* *fff* *sfz* *sfz* *sfz*

150 (tr) *tr* *sfz* *sfz* *dim.* 3 3 3 3 *mp* *dim.*

159 Lento 14 13 2 rall. 15 I Tempo 7 3 3 3 3 8 4 2 2

183 *f*

189 Più Allegro *tr* 9 *tr* *fff*

Timpani

IV. San Gregorio Magno

Lento 3 6 2 20 10 4 21 Moderato 10

38 rall. 22 Più Moderato

42

45 (tr) 2

49 23 poco sostenuto Solenne

53 (tr) 12 24 Più mosso 3 25 10

86 26 Lento 27

101 28 Più Largo

109

117 29 A tempo

Vetrata Di Chiesa

4 Impressioni per Orchestra

1. La Fuga in Egitto

Ottorino Respighi
Digitalización: Gonzalofb

Molto Lento **7** poco rit. **1** A tempo **8** **2** A tempo poco rit. Molto Lento

21 *pp* *pp* *pp* *pp*

28 **3** rall. *tr* Tempo I *pp* **3** poco rit.

39 A tempo **4** A tempo **2** Largamente **2** rall. **2**/₄ **5**/₄ **4** rall.

II. San Michele Arcangelo

5 Allegro impetuoso

5 2/2 f sf

9 (tr) 6 7 10 8 Più Vivo 27 9 20 10 4 15

9 20 fff 10 27 20 4 15

106 11 12 Tempo I 17 13 2 15 3 8/4

106 15 fff 17 2 fff 15 p 3 8/4

161 14 Lento rall. 6 8/4 2/2

161 6 p 2/2

176 15 I Tempo Più Allegro

176 pp cresc. cresc. cresc. ff

190 7 7

190 7 ff ff ff > pp

Tam-Tam

II. San Michele Arcangelo

Allegro impetuoso
5 8 6 20 7 11 8 27 9 20 10 4

91 15 11 15 12 **Tempo I** 13 2 20 **Lento** 14 8 6

170 *p* *rall.*

176 **I Tempo** 15 *tr* *pp* *cresc.* *cresc.* *cresc.* **Più Allegro** 17 *ff* *fff* *> pp*

Detailed description: The score is for a Tam-Tam instrument. It consists of four staves. The first staff starts with a 2/2 time signature and contains measures 5 through 10, with durations of 8, 20, 11, 27, 20, and 4 measures respectively. The tempo is marked 'Allegro impetuoso'. The second staff starts at measure 91 and contains measures 11 through 14, with durations of 15, 15, 18, 2, 20, and 6 measures. The tempo changes to 'Tempo I' and then 'Lento'. The third staff starts at measure 170 and contains measures 15 through 17, with durations of 15, 17, and 17 measures. The tempo is 'Più Allegro'. The fourth staff starts at measure 176 and contains measures 15 through 17, with durations of 15, 17, and 17 measures. The tempo is 'Più Allegro'. The score includes various dynamic markings such as *pp*, *cresc.*, *ff*, *fff*, and *pp*, and articulation marks like *tr* and *>*. The time signature changes from 2/2 to 2/4 and back to 2/2.

Tam-Tam piccolo
Tam-Tam medio
Tam-Tam grande
Gran Casa

IV. San Gregorio Magno

Lento

p *pp* *p* *p* *lasciar vibr.*

13 **20**

pp *pp* *pp*

20

ppp *rall.*

25 **21** **Moderato** **10** **2** **18**

dim. *rall.* 10 2 18

40 **22** **23** **Piu Moderato** poco sostenuto

9 9 9 9

p *cresc.* *p*

59 **24** **Più mosso** ♩ = ♪

7 4 4 4 4

p

73 **25**

10 10 10 10

pp

88 **26** **Lento** **27**

p

96

(tr)

103 **28** Piu Largo rit.

9

9

9

9

ff

ff

117 **29** A tempo

fff

fff

fff

fff

2

2

2

2

ff

ff

III. Mattutino di Santa Chiara.-

Lento **8** **16** **A tempo** **6** **5** **poco rit..**

21 **17** **a tempo** **5** **2** *p*

33 **18** **Piu Lento** **3** **2** *più p*

43 **19** **rall.** **ataca 4°** .
pp *ppp*